



Apartment (EPC Rating: C)

**MERCHANTS HOUSE, QUEEN STREET,
CIRENCESTER, GLOUCESTERSHIRE, GL7**
PCM

£895 PCM

CANNON ESTATES
SALES & LETTINGS



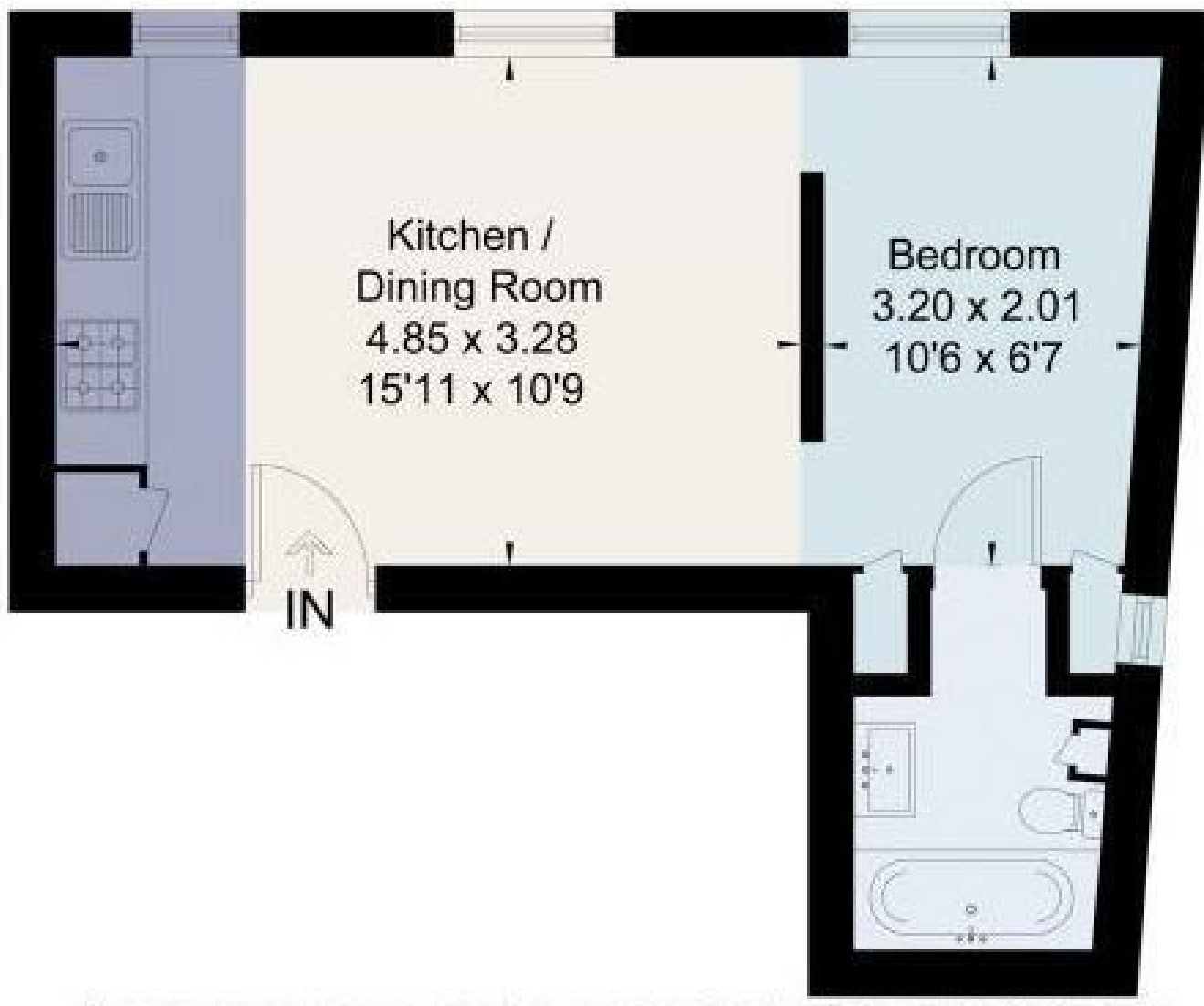
I Bedroom Apartment located in Cirencester

A luxurious renovated top floor apartment at the rear of the property overlooking the communal gardens which benefits from modern open plan living with high vaulted ceilings, comprises of a kitchen complete with integrated appliances. The lounge area comes with smart TV, made to measure upholstery, The bedroom has been cleverly designed to offer a further TV, divan bed and storage with access to a luxurious bathroom. Available now. EPC A .

A luxurious renovated top floor apartment at the rear of the property overlooking the communal gardens which benefits from modern open plan living with high vaulted ceilings, comprises of a kitchen complete with integrated appliances. The lounge area comes with smart TV, made to measure upholstery, The bedroom has been cleverly designed to offer a further TV, divan bed and storage with access to a luxurious bathroom. Available now. EPC A .



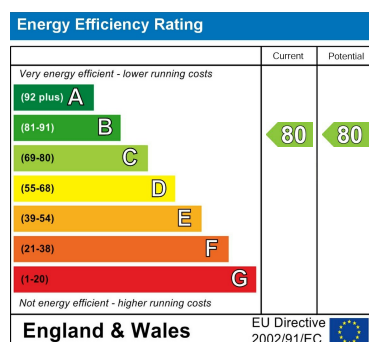
CIRENCESTER LETTINGS | 6 THE WOOL MARKET, CIRENCESTER, GLOUCESTERSHIRE, GL7 2PR



Council Tax Band

A

Energy Performance Graph



Call us on

01285 706900

info@cannon-estates.co.uk

<https://www.cannon-estates.co.uk/>

Agents Note: Whilst every care has been taken to prepare these particulars, they are for guidance purposes only. All measurements are approximate and are for general guidance purposes only and whilst every care has been taken to ensure their accuracy, they should not be relied upon and potential buyers are advised to recheck the measurements.

CANNON ESTATES
SALES & LETTINGS