

LEASEHOLD



Apartment (EPC Rating: )

**HORIZON HOUSE, LONGWOOD COURT,  
CIRENCESTER, GLOUCESTERSHIRE, GL7**  
Asking Price

**£195,000**

**CANNON ESTATES**  
SALES & LETTINGS

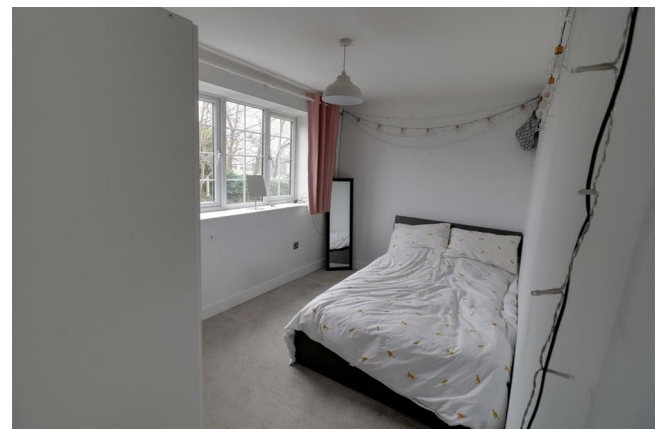


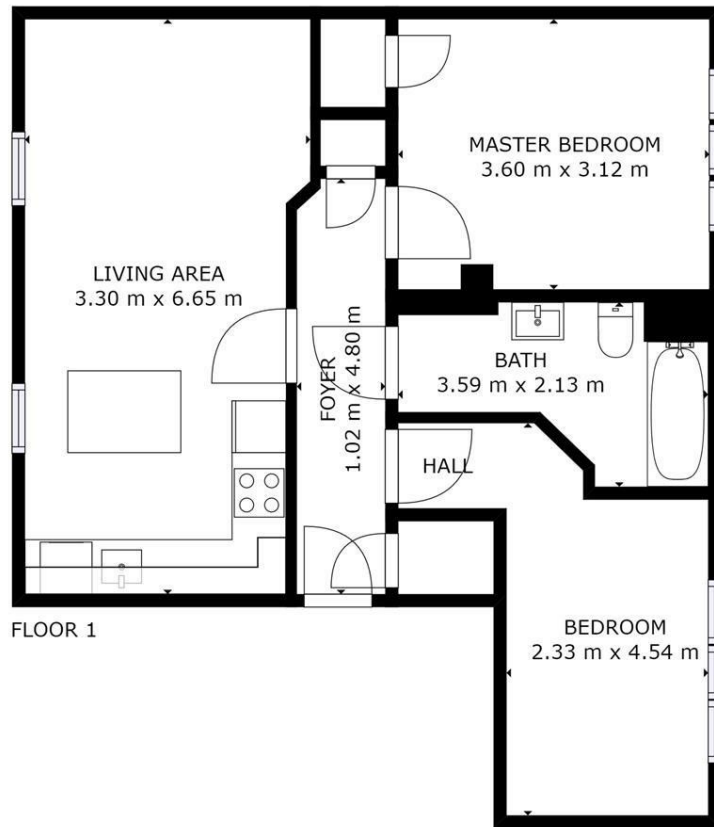
# 2 Bedroom Apartment located in Cirencester

Offered to the market chain free and nestled in the charming town of Cirencester, this modern apartment presents an excellent opportunity for both investors and first-time buyers. With two generous bedrooms, this property offers ample space for comfortable living. The well-designed layout includes a welcoming reception room, perfect for relaxation or entertaining guests. The property also benefits from a modern kitchen with a stunning kitchen island, providing plenty of entertaining space. This spacious and modern accommodation also benefits from a modern three-piece bathroom suite consisting of a w/c, porcelain basin and shower-over-bath suite.

Conveniently located, the apartment is just a short drive from the vibrant town centre of Cirencester, where you can enjoy a variety of shops, cafes, and local amenities. This prime location ensures that everything you need is within easy reach, making daily life both convenient and enjoyable.

Additionally, the property comes with an allocated parking space, a valuable feature in this bustling area. Whether you are looking to invest or seeking your first home, this apartment is a fantastic choice that combines modern living with accessibility to the best that Cirencester has to offer. Don't miss the chance to make this delightful property your own.





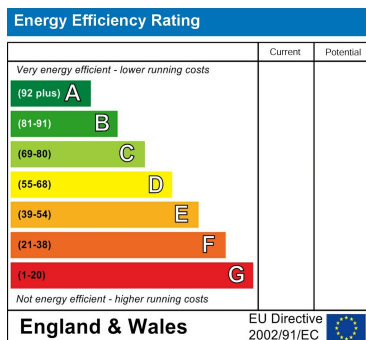
GROSS INTERNAL AREA  
FLOOR 1: 59 m<sup>2</sup>  
TOTAL: 59 m<sup>2</sup>  
SIZES AND DIMENSIONS ARE APPROXIMATE, ACTUAL MAY VARY.



Council Tax Band

**B**

Energy Performance Graph



Call us on

**01285 706900**

[info@cannon-estates.co.uk](mailto:info@cannon-estates.co.uk)

<https://www.cannon-estates.co.uk/>

Agents Note: Whilst every care has been taken to prepare these particulars, they are for guidance purposes only. All measurements are approximate and are for general guidance purposes only and whilst every care has been taken to ensure their accuracy, they should not be relied upon and potential buyers are advised to recheck the measurements.

**CANNON ESTATES**  
SALES & LETTINGS