



Apartment (EPC Rating: C)

HOOPERS COURT, CIRENCESTER, GLOUCESTERSHIRE, GL7 1GS

Asking Price

£155,000

CANNON ESTATES
SALES & LETTINGS



1 Bedroom Apartment located in Cirencester

Calling All Investors – Tenant in Situ with a 6.5% Yield!

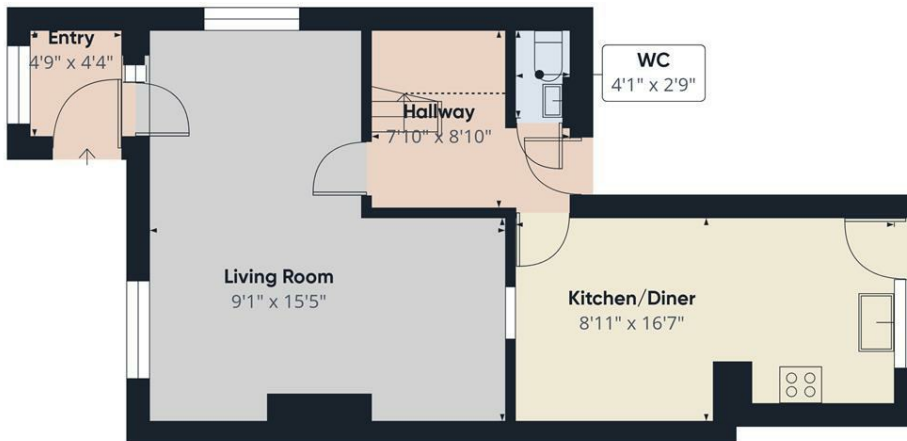
An excellent opportunity to acquire a well-presented one-bedroom ground floor apartment, ideally positioned in the heart of Cirencester town centre. Located within the sought-after development of Hoopers Court, this property offers immediate access to a wide range of local amenities, shops, restaurants, and transport links.

The apartment is currently let, providing a stable rental income with a healthy gross yield of 6.5%, making it a ready-made investment with no void period.

Well-suited to professional tenants due to its central location, the property is situated in a secure, well-maintained block and offers bright, practical living space with a modern finish throughout.

Whether you're expanding your portfolio or looking for a hassle-free first investment, this is a rare chance to secure a tenanted property in one of the Cotswolds' most desirable market towns.





Floor 0



Floor 1

Approximate total area[®]
832 ft²

Reduced headroom
15 ft²

(1) Excluding balconies and terraces

Reduced headroom
..... Below 5 ft

While every attempt has been made to ensure accuracy, all measurements are approximate, not to scale. This floor plan is for illustrative purposes only.

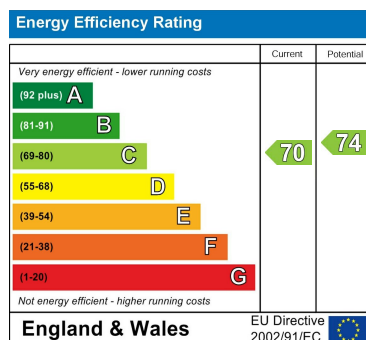
Calculations are based on RICS IPMS 3C standard.

GIRAFFE360

Council Tax Band

A

Energy Performance Graph



Call us on

01285 706900

info@cannon-estates.co.uk

<https://www.cannon-estates.co.uk/>

Agents Note: Whilst every care has been taken to prepare these particulars, they are for guidance purposes only. All measurements are approximate and are for general guidance purposes only and whilst every care has been taken to ensure their accuracy, they should not be relied upon and potential buyers are advised to recheck the measurements.

CANNON ESTATES
SALES & LETTINGS