

FREEHOLD

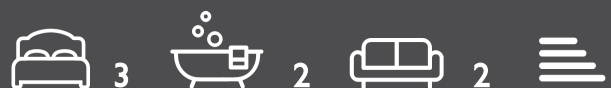


Cottage (EPC Rating:)

**CORNER COTTAGE, QUEEN STREET,,
CHEDWORTH, CHELTENHAM, GL54 4AG**

£700,000

CANNON ESTATES
SALES & LETTINGS



3 Bedroom Cottage located in Cheltenham

Situated in the village of Chedworth, an area of outstanding natural beauty.

This exquisitely designed and well-maintained mid 1700's-built Cotswold Cottage. Featuring stunning character features such as exposed Cotswold Stone, split level floors and hand-crafted doors; exuding pure, Cotswold charm throughout. Having had an extension added to the property, 25 years ago, this accommodation offers space in abundance.

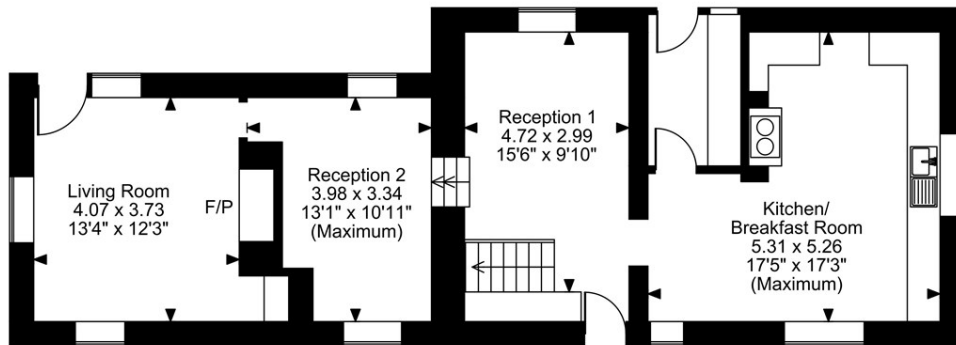
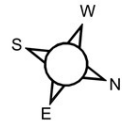
Entering through the ground floor, you meet the stone layered floor, kitchen-diner, fitted with an Aga Cooker, and with space for a dishwasher and a plethora of space for entertaining guests and family alike. The property is also benefitted by a utility with a hand-crafted stable door to the rear garden, providing easy access for guests.

As you make your way along the stone floor, you enter the lower ground floor, you are met with an oak floored study area, which could also be utilised as a playroom as well as a cosy living room, with a fully functioning wood burning fireplace as well as additional access to the garden.

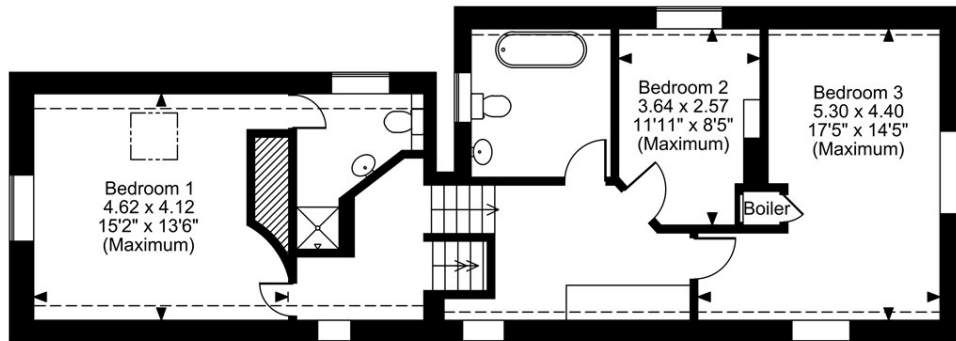
Venturing to the first and second floor, this charming accommodation comprises of three ample-sized double bedrooms, with the master bedroom benefitting from an en-suite consisting of a basin and walk in shower



Corner Cottage, Queen Street, Cheltenham
Approximate Gross Internal Area
1594 Sq Ft/148 Sq M



Ground Floor



First Floor

Second Floor

FOR ILLUSTRATIVE PURPOSES ONLY - NOT TO SCALE

The position & size of doors, windows, appliances and other features are approximate only.

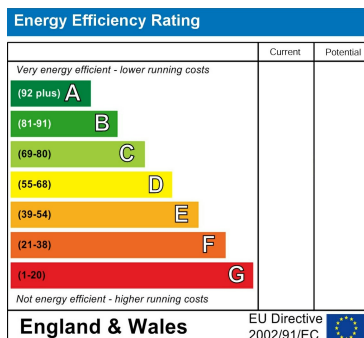
□ □ □ □ Denotes restricted head height

© ehouse. Unauthorised reproduction prohibited. Drawing ref. dig/8633882/SS

Council Tax Band

E

Energy Performance Graph



Call us on

01285 706900

info@cannon-estates.co.uk

<https://www.cannon-estates.co.uk/>

Agents Note: Whilst every care has been taken to prepare these particulars, they are for guidance purposes only. All measurements are approximate and are for general guidance purposes only and whilst every care has been taken to ensure their accuracy, they should not be relied upon and potential buyers are advised to recheck the measurements.

CANNON ESTATES
SALES & LETTINGS