

LEASEHOLD



Apartment (EPC Rating:)

**WOODHOUSE CLOSE, CIRENCESTER,
GLOS, GL7 1YH**
Asking Price

£145,000

CANNON ESTATES
SALES & LETTINGS

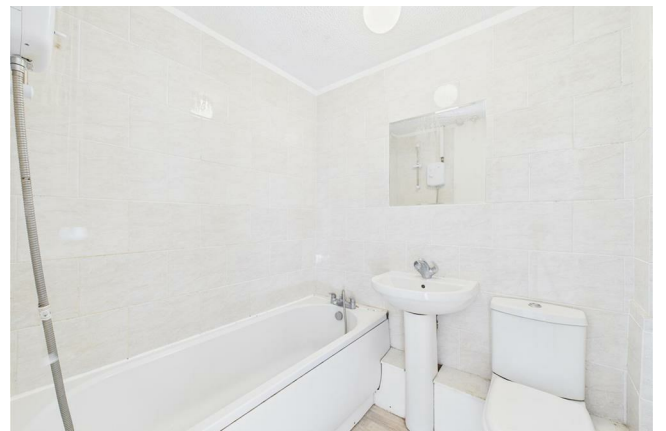


1 Bedroom Apartment located in Glos

Perfect for First Time Buyers and Investors; offered to the market with no onward chain is this recently refurbished light and airy one bedroom second floor apartment located in the desirable area on the outskirts of Cirencester town centre close to all amenities.

The property benefits from kitchen with space for fridge and washing machine as well as separate living room, three-piece bathroom suite consisting of w/c, basin and shower-over-bath suite. The property also benefits from a generous double bedroom.

Don't miss out!





Approximate total area^m
369 ft²

(1) Excluding balconies and terraces

While every attempt has been made to ensure accuracy, all measurements are approximate, not to scale. This floor plan is for illustrative purposes only.

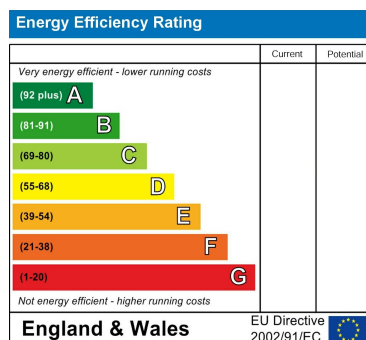
Calculations were based on RICS IPMS 3C standard. Please note that calculations were adjusted by a third party and therefore may not comply with RICS IPMS 3C.

GIRAFFE360

Council Tax Band

A

Energy Performance Graph



Call us on

01285 706900

info@cannon-estates.co.uk

<https://www.cannon-estates.co.uk/>

Agents Note: Whilst every care has been taken to prepare these particulars, they are for guidance purposes only. All measurements are approximate and are for general guidance purposes only and whilst every care has been taken to ensure their accuracy, they should not be relied upon and potential buyers are advised to recheck the measurements.

CANNON ESTATES
SALES & LETTINGS