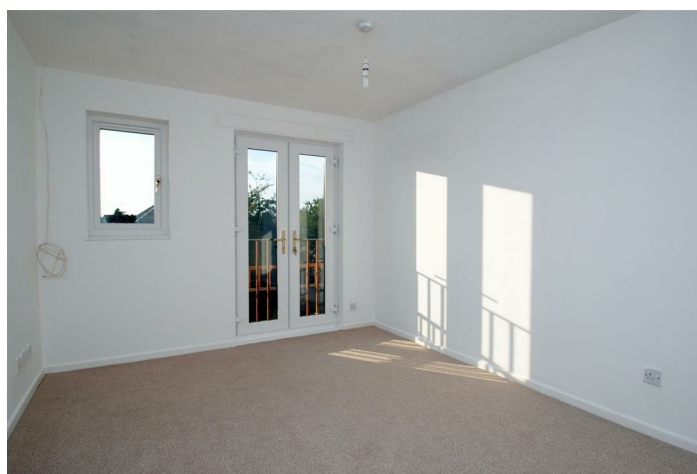


LEASEHOLD



Apartment (EPC Rating:)

WOODHOUSE CLOSE, CIRENCESTER,
GLOS, GL7 1YH
Offers In Excess Of
£150,000

CANNON ESTATES
SALES & LETTINGS



1 Bedroom Apartment located in Glos

Perfect for First Time Buyers and Investors; offered to the market with no onward chain is this recently refurbished light and airy one bedroom second floor apartment located in the desirable area on the outskirts of Cirencester town centre close to all amenities.

The property benefits from kitchen with space for fridge and washing machine as well as separate living room, three-piece bathroom suite consisting of w/c, basin and shower-over-bath suite. The property also benefits from a generous double bedroom.

Don't miss out!

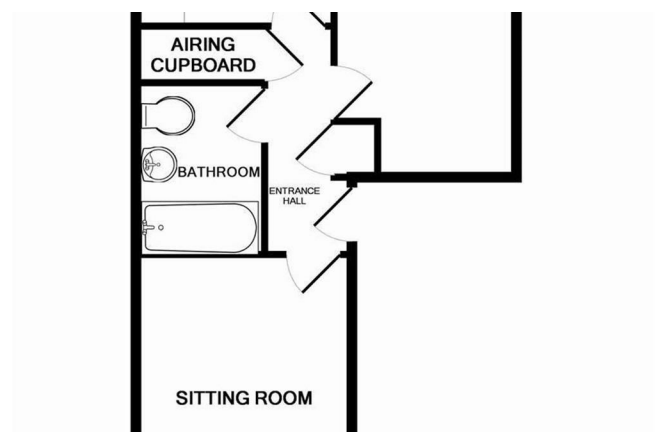
Cannon Estates are excited to introduce this delightful one-bedroom top floor apartment, perfectly located, just a short walk from the vibrant Cirencester Town Centre, this property offers both convenience and comfort, making it an ideal choice for first-time buyers, downsizers, or savvy investors.

Nestled within the popular Chesterton area, this apartment provides easy access to the heart of Cirencester. Enjoy the convenience of being just minutes away from a variety of shops, cafes, restaurants, and local amenities, all within walking distance. Upon entering, you'll be greeted by an entrance hall which leads to a bright sitting room, perfect for relaxing. The French doors allow plenty of natural light to fill the room, creating a warm and welcoming atmosphere.

The apartment features a fitted kitchen, offering ample storage. The double bedroom is generously sized, providing a peaceful retreat after a long day. With enough space for a double bed and additional furnishings.

The bathroom is fitted with a bath and a shower over, ensuring you have the option for a quick morning rinse or a relaxing soak in the tub. The property also comes with allocated parking, a valuable feature in this desirable area. You'll have peace of mind knowing there's always a space waiting for you. This apartment is not only comfortable but also energy-efficient, helping to keep utility costs down.

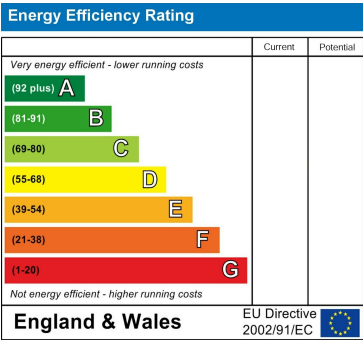
This charming apartment offers an excellent opportunity for those looking to move quickly. Don't miss out on the chance to own a well-located apartment in Cirencester. Contact Cannon Estates today to arrange a viewing.



Council Tax Band

A

Energy Performance Graph



Call us on

01285 706900

info@cannon-estates.co.uk

https://www.cannon-estates.co.uk/

Agents Note: Whilst every care has been taken to prepare these particulars, they are for guidance purposes only. All measurements are approximate and are for general guidance purposes only and whilst every care has been taken to ensure their accuracy, they should not be relied upon and potential buyers are advised to recheck the measurements.