

8 Halifax Close, Hilton, Derby, DE65 5HH

£895 PCM

Scofield Stone are delighted to offer 'To Let' this well presented two bedroom semi-detached home situated in this highly sought after area . The accommodation briefly comprises; sitting room, kitchen diner, one master bedroom, one double room, and a modern family bathroom with an electric shower. The property benefits from full UPVC double glazed windows, gas central heating.

EPC: 68 (D). Council Tax Band: B. Deposit £1,030, which includes a Holding Deposit of £205.



Sales: 01283 777100
Lettings: 01332 511000
www.scofieldstone.co.uk

8 Halifax Close, Hilton, Derby, DE65 5HH

Full Description

Presenting a new semi-detached home available for let in a tranquil location that boasts excellent connectivity through public transport links. This property is in close proximity to local amenities and coveted schools, making it an ideal choice for families and couples alike.

The property features two well-presented bedrooms. The master bedroom is a generous double room bathed in natural light and offers the convenience of built-in wardrobes. The second bedroom is a compact yet charming space that similarly benefits from an abundance of natural light.

The home provides one reception room, perfect for relaxing or entertaining guests. The kitchen, brightened by natural daylight, is well-equipped, providing a welcoming space for home-cooked meals.

A standout feature of this property is the inclusion of a garage, providing secure parking or additional storage space as required.

Please note that the property comes unfurnished, giving you the freedom to style it according to your taste and preferences.

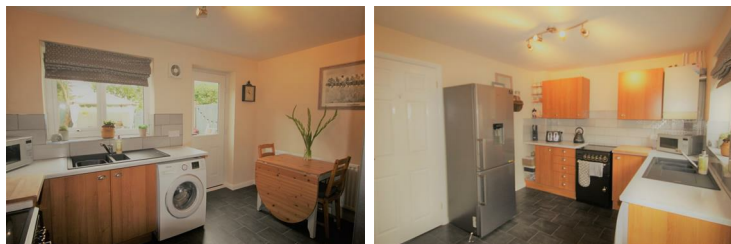
This semi-detached home beautifully combines a peaceful location with the convenience of nearby amenities, presenting a perfect opportunity for those looking for a harmonious blend of comfort and practicality.

Sitting Room



Neutrally decorated walls, flooring to carpet, ceiling lamp, radiator and UPVC double glazed window.

Kitchen/Diner



Neutrally decorated walls with tiled splash back above base units, Laminate tile effect flooring, worktop to base units, sink with mixer taps, plumbing for washing machine, upvc window and upvc door leading to rear garden

Bathroom



White three piece bathroom suite with tiled walls .

Bedroom One



Carpet to flooring with neutrally decorated with a feature blue wall, light shade to ceiling, upvc window, radiator and built in wardrobes.

Bedroom Two



Carpet to flooring, neutrally decorated, lamp shade to ceiling, fitted wardrobes, radiator and upvc window

Outside



Mainly laid to lawn, and decking area

Disclaimer

These particulars, whilst believed to be accurate are set out as a general outline only for guidance and do not constitute any part of an offer or contract. Floor plans are not drawn to scale and room dimensions are subject to a +/- 50mm (2") tolerance and are based on the maximum dimensions in each room. Intending purchasers should not rely on them as statements of representation of fact but must satisfy themselves by inspection or otherwise as to their

8 Halifax Close, Hilton, Derby, DE65 5HH

accuracy. No person in this firm's employment has the authority to make or give any representation or warranty in respect of the property.

What Three Words

///position.movies.bends

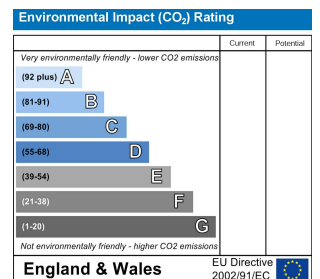
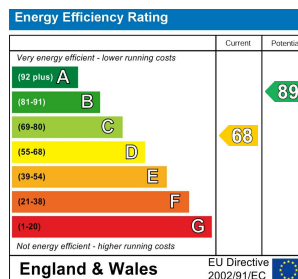
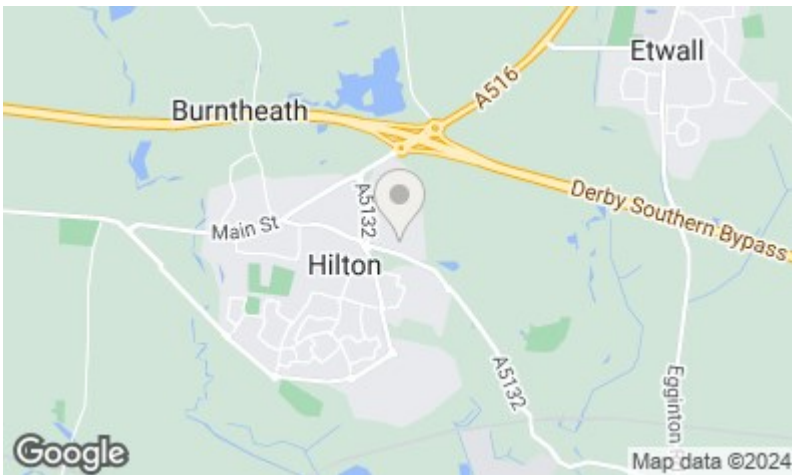
Council Tax Band : B



Sales: 01283 777100

Lettings: 01332 511000

www.scofieldstone.co.uk



Mickleover Office
11 The Square,
Mickleover,
Derby DE3 0DD

Hilton Office
Unit 6, Neighbourhood Centre
Witham Close,
Hilton, Derby DE65 5JR

t: Sales 01283 777100
t: Lettings 01332 511000
e: info@scoffieldstone.co.uk
w: www.scoffieldstone.co.uk

Co Reg No. 8975758 VAT No. GB186513980