



## Dagmar Court Manchester Road, London, E14 3JG

SellMyHome are happy to present to market this spacious, first floor, studio apartment located within close proximity to both Crossharbour and South Quay DLR stations.

This is perfect for first-time buyers or investors looking to add to their portfolio.

The property briefly comprises a living room, kitchen, double bedroom and four-piece bathroom.

Don't miss out on your ideal property and contact SellMyHome to book your viewing appointment.

Tenure: Leasehold  
Lease Term Remaining: 93 Years

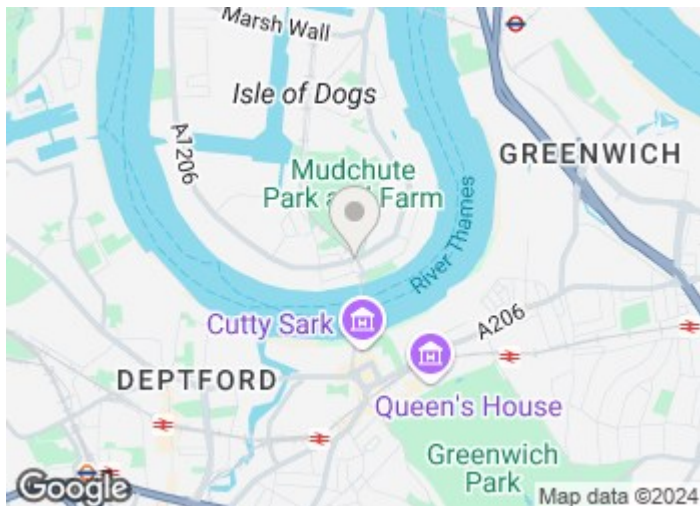
**Price Guide £230,000**

# Dagmar Court Manchester Road

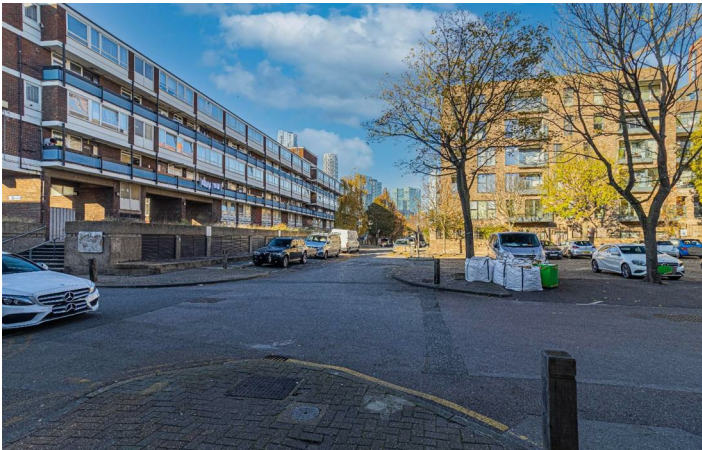
, London, E14 3JG



- CHAIN FREE
- EX LOCAL AUTHORITY
- STUDIO APARTMENT ON FIRST FLOOR
- IDEAL LOCATION
- PERFECT FOR FIRST TIME BUYERS OR INVESTORS
- CLOSE TO DLR STATIONS



[Directions](#)



# Floor Plan

Floor Plans  
For  
79 Dagmar Court  
London  
E14



These particulars, whilst believed to be accurate are set out as a general outline only for guidance and do not constitute any part of an offer or contract. Intending purchasers should not rely on them as statements of representation of fact, but must satisfy themselves by inspection or otherwise as to their accuracy. No person in this firm's employment has the authority to make or give any representation or warranty in respect of the property.

Energy Efficiency Rating		Environmental Impact (CO <sub>2</sub> ) Rating	
	Current	Potential	
Very energy efficient - lower running costs			Very environmentally friendly - lower CO <sub>2</sub> emissions
(92 plus) <b>A</b>			(92 plus) <b>A</b>
(81-91) <b>B</b>			(81-91) <b>B</b>
(69-80) <b>C</b>			(69-80) <b>C</b>
(55-68) <b>D</b>			(55-68) <b>D</b>
(39-54) <b>E</b>			(39-54) <b>E</b>
(21-38) <b>F</b>			(21-38) <b>F</b>
(1-20) <b>G</b>			(1-20) <b>G</b>
Not energy efficient - higher running costs			Not environmentally friendly - higher CO <sub>2</sub> emissions
		75 76	
England & Wales	EU Directive 2002/91/EC		England & Wales
			EU Directive 2002/91/EC