



Mercury House 2 Jude Street, London, E16 1FF

GUIDE PRICE £400,000 - £435,000

Sell My Home are pleased to bring to the market this very well-presented two bedroom flat located in East London close to Canning Town station and a short walk from Royal Victoria Docks DLR.

The property is located on the first floor with communal gardens, 24 hours concierge service and also a lift in the building.

Briefly, the property comprises of an entrance hall leading to a open plan kitchen living area with floor and wall based units, integrated appliances all finished to high standard including integrated fridge/freezer, washing machine, microwave, induction hob & oven, inset sink and drainer and extractor fan.

The open-plan living offers natural light to flood the property to create a light and airy ambience.

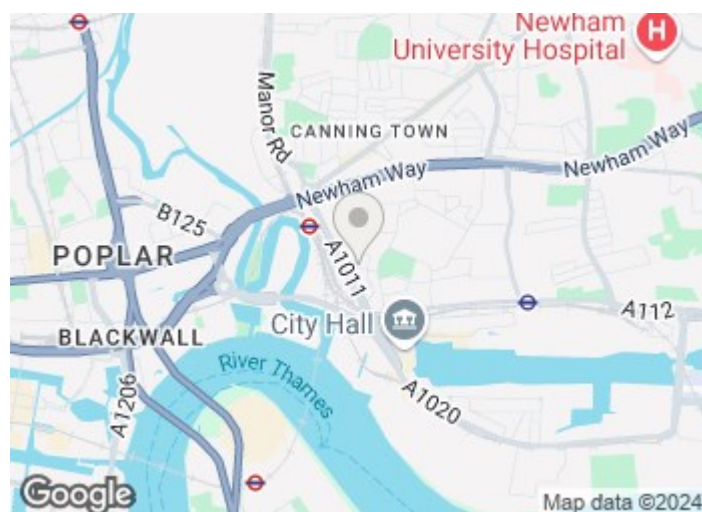
Guide Price £400,000

Mercury House 2 Jude Street

, London, E16 1FF



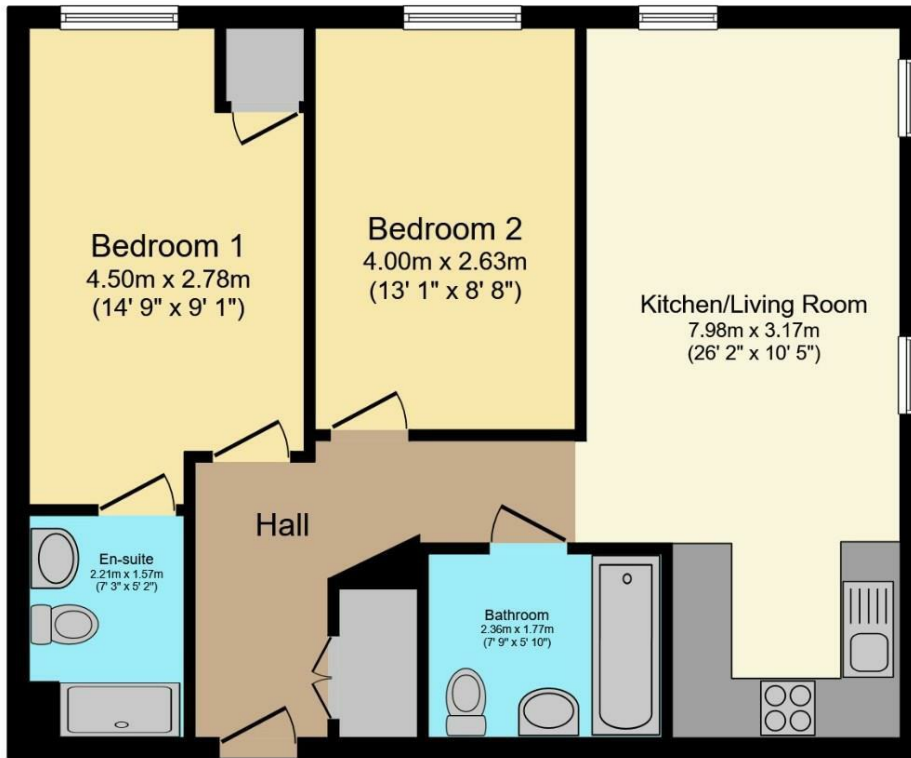
- CHAIN FREE
- PERFECT FOR FIRST TIME BUYERS OR INVESTORS
- 24 HOUR CONCIERGE
- FIRST FLOOR 2 BEDROOM APARTMENT
- OPEN TO MORTGAGE & CASH BUYERS
- SECURE ALLOCATED PARKING SPACE
- LIFT IN BLOCK



Directions



Floor Plan



Total floor area 62.7 m² (675 sq.ft.) approx

This floor plan is for illustrative purposes only. It is not drawn to scale. Any measurements, floor areas (including any total floor area), openings and orientation are approximate. No details are guaranteed, they cannot be relied upon for any purpose and they do not form part of any agreement. No liability is taken for any error, omission or misstatement. A party must rely upon its own inspection(s). Powered by www.focalagent.com

These particulars, whilst believed to be accurate are set out as a general outline only for guidance and do not constitute any part of an offer or contract. Intending purchasers should not rely on them as statements of representation of fact, but must satisfy themselves by inspection or otherwise as to their accuracy. No person in this firm's employment has the authority to make or give any representation or warranty in respect of the property.

