



Plot 292 Walmsley Close, Chesterfield, S45 9FN

Airy and substantial, The Barlow shouts about its spacious rooms along with its large windows drawing in natural light creating homes that can help people be happier, healthier, and calmer. The Master bedroom features a walk-in wardrobe allowing you to keep the sleeping space free from intrusive furniture and messy clutter. A tidy room helps keep you feeling motivated and ready for the day ahead.

Photos of the show house

Price £359,995

Plot 292 Walmsley Close

Clay Cross, Chesterfield, S45 9FN



- Popular location
- Energy efficient new home
- Four bedroom detached property
- Ideal family home
- Brand new build
- Single garage and driveway

FRONT ELEVATION

ENTRANCE HALLWAY

STUDY

8'7" x 8'0" (2.64 x 2.45)

LOUNGE

11'6" x 26'2" (3.51 x 7.99)

KITCHEN WITH DINING AREA

26'5" x 10'9" (8.06 x 3.29)

UTILITY ROOM

5'9" x 4'11" (1.77 x 1.50)

DOWNSTAIRS WC

5'9" x 2'9" (1.77 x 0.85)

STAIRS & LANDING

BEDROOM ONE

17'5" x 11'5" (5.31 x 3.48)

EN SUITE

7'4" x 4'11" (2.25 x 1.52)

BEDROOM TWO

12'8" x 11'2" (3.88 x 3.41)

BEDROOM THREE

9'1" x 11'3" (2.77 x 3.45)

BEDROOM FOUR

9'1" x 7'3" (2.77 x 2.22)

FAMILY BATHROOM

9'1" x 7'3" (2.77 x 2.22)

DRIVEWAY WITH GARAGE

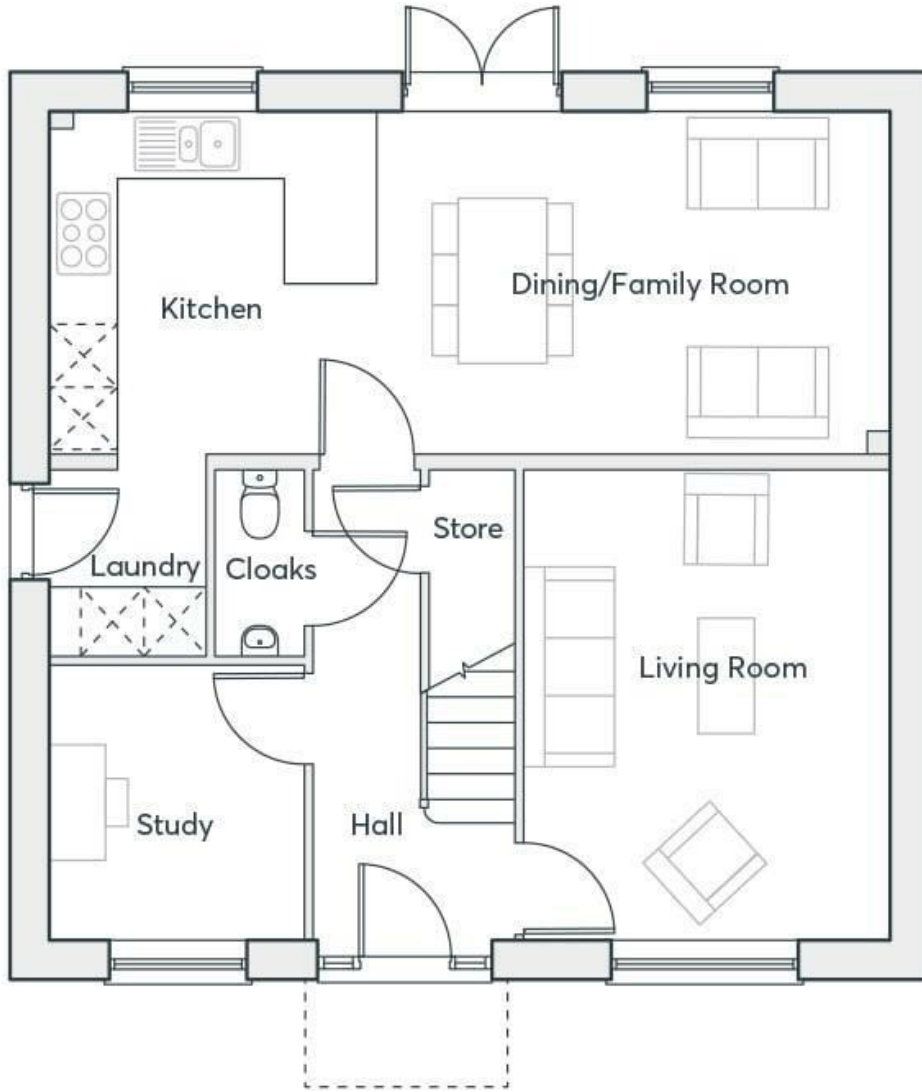
REAR ENCLOSED GARDEN



Directions



Floor Plan



These particulars, whilst believed to be accurate are set out as a general outline only for guidance and do not constitute any part of an offer or contract. Intending purchasers should not rely on them as statements of representation of fact, but must satisfy themselves by inspection or otherwise as to their accuracy. No person in this firm's employment has the authority to make or give any representation or warranty in respect of the property.

Energy Efficiency Rating		Environmental Impact (CO ₂) Rating		
	Current	Potential		
<p>Very energy efficient - lower running costs</p> <p>(92 plus) A</p> <p>(81-91) B</p> <p>(69-80) C</p> <p>(55-68) D</p> <p>(39-54) E</p> <p>(21-38) F</p> <p>(1-20) G</p> <p>Not energy efficient - higher running costs</p>			<p>Very environmentally friendly - lower CO₂ emissions</p> <p>(92 plus) A</p> <p>(81-91) B</p> <p>(69-80) C</p> <p>(55-68) D</p> <p>(39-54) E</p> <p>(21-38) F</p> <p>(1-20) G</p> <p>Not environmentally friendly - higher CO₂ emissions</p>	
England & Wales	EU Directive 2002/91/EC		England & Wales	EU Directive 2002/91/EC