



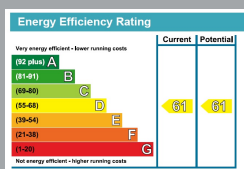
5 THE PEAK
WESTBOURNE
Dorset, BH2 6DH

£1,200
PER CALENDAR MONTH

goadsby.com

SPACIOUS MODERN TWO BEDROOM MAISONETTE WITH PRIVATE ENTRANCE.

- Two Bedroom Maisonette
- Unfurnished
- Allocated Parking
- Modern Throughout
- EPC Rating: Band D



Reference: 735109

Deposit Amount: £1,384.61

Council Tax Band: A

Furnishing: Unfurnished

Heating Type: Electric heaters

Parking: One Allocated Parking Space

Utilities: Ask Agent
Mains Supply Electricity
Mains Supply Water

Drainage: Mains Supply Drainage

Broadband: Refer to Ofcom website
www.ofcom.org.uk/phones-and-broadband

Mobile Signal: Refer to Ofcom website
www.ofcom.org.uk/phones-and-broadband

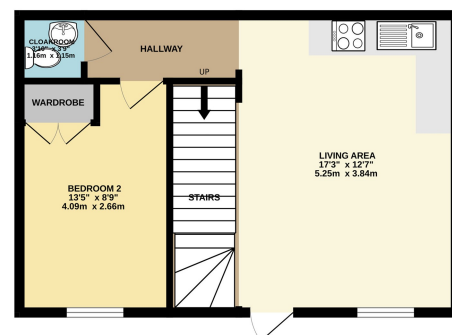
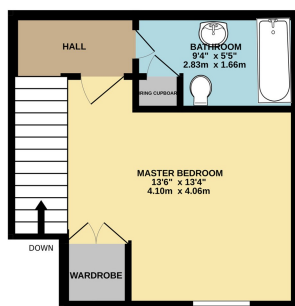
Flood Risk: Very Low. For more information refer to gov.uk, check long term flood risk www.gov.uk/check-long-term-flood-risk



This spacious newly carpeted and decorated modern two bedroom maisonette is offered to the market unfurnished. Located between Bournemouth and Westbourne the property benefits from allocated parking, private entrance, separate WC and integrated kitchen appliances and electric heating.

BASEMENT

GROUND FLOOR



This Floor Plan is for guidance only and is NOT to SCALE
Made with Metropix 02024

PLEASE NOTE:

Measurements quoted are approximate and for guidance only. Fixtures, fittings, services & appliances have not been tested and therefore no guarantee can be given that they are in working order. Images have been produced for information and it cannot be inferred that any item shown is included with the property. These particulars are believed to be correct but their accuracy is not guaranteed and they do not constitute an offer or form part of a contract. Solicitors are specifically requested to verify the sales particulars details in the pre-contract enquiries, in particular: price, local and other searches.

Goadsby & Harding (Residential) Ltd
Registered Office: 99 Holdenhurst Road, Bournemouth, Dorset BH8 8DY Registered in England No. 1871280

01202 701616
canfordcliffs@goadsby.com

39 Haven Road

Canford Cliffs
Poole, Dorset
BH13 7LE