



118 Marine Crescent, Worthing, Goring By Sea, BN12 4HR

Guide price £900,000





# 118 Marine Crescent

Worthing, Goring By Sea, BN12 4HR

Guide price £900,000 - £925,000.

Nestled just off Goring-By-Sea's picturesque seafront, this beautiful four-bedroom detached home with DOUBLE GARAGE enjoys breath-taking, uninterrupted SEA VIEWS. Perfectly positioned opposite the greens and sandy shoreline, this charming residence offers a wonderful blend of space, comfort, and coastal living.

Stepping inside, a welcoming hallway leads to the heart of the home – a stunning open-plan kitchen and dining area, thoughtfully designed with bespoke cabinetry, granite worktops, and a Belfast sink. Bi-fold doors seamlessly connect the space to the garden, inviting in an abundance of natural light and the soothing sounds of the sea. The lounge, complete with a feature bay window framing the coastal views and a cosy log burner, provides the perfect retreat for relaxation. A separate study, office, and utility room add to the versatility of the layout, ensuring ample space for work and family life.

Upstairs, the principal bedroom is a true sanctuary, boasting its own dressing area, en-suite shower room, and a private balcony where you can wake up to the sight and sound of the waves. A second bedroom also enjoys stunning sea views, while two further well-proportioned bedrooms overlook the rear garden. A stylish family bathroom completes the first floor.

Outside, the generous block-paved driveway offers parking for multiple vehicles, while the rear garden provides a private and peaceful escape, with a mix of lawn, decking, and a dedicated play area.

With Goring's charming cafés, shops, and transport links close by – and Worthing's vibrant town centre just moments away – this is a rare opportunity to enjoy beachfront living in a highly sought-after location.





Entrance Porch

Entrance Hall

Bay fronted South Facing Living Room

22'1 x 19'10 (6.73m x 6.05m)

Open Plan Kitchen/Diner

22'2 x 13'3 (6.76m x 4.04m)

Family Room

21'2 x 7'5 (6.45m x 2.26m)

Office

11'6 x 8'10 (3.51m x 2.69m)

Study

22'11" x 16'4" x 16'4" x 26'2" (7'5 x 5'8)

Utility Room

7'5 x 4'0 (2.26m x 1.22m)

Stairs to First Floor Landing

Bedroom One

19 x 15'8 (5.79m x 4.78m)

South Facing Balcony

14'3 x 6'1 (4.34m x 1.85m)

En Suite

7'1 x 6'8 (2.16m x 2.03m)

Bedroom Two

12'0 x 10'3 (3.66m x 3.12m)

Bedroom Three

10'3 x 9'11 (3.12m x 3.02m)

Bedroom Four

9'11 x 7'3 (3.02m x 2.21m)

Bathroom

7'9 x 5'10 (2.36m x 1.78m)

Double Garage

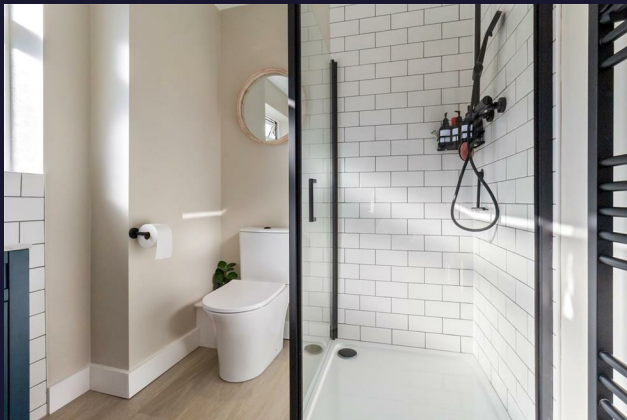
19'8 x 11'6 (5.99m x 3.51m)

Off Road Parking

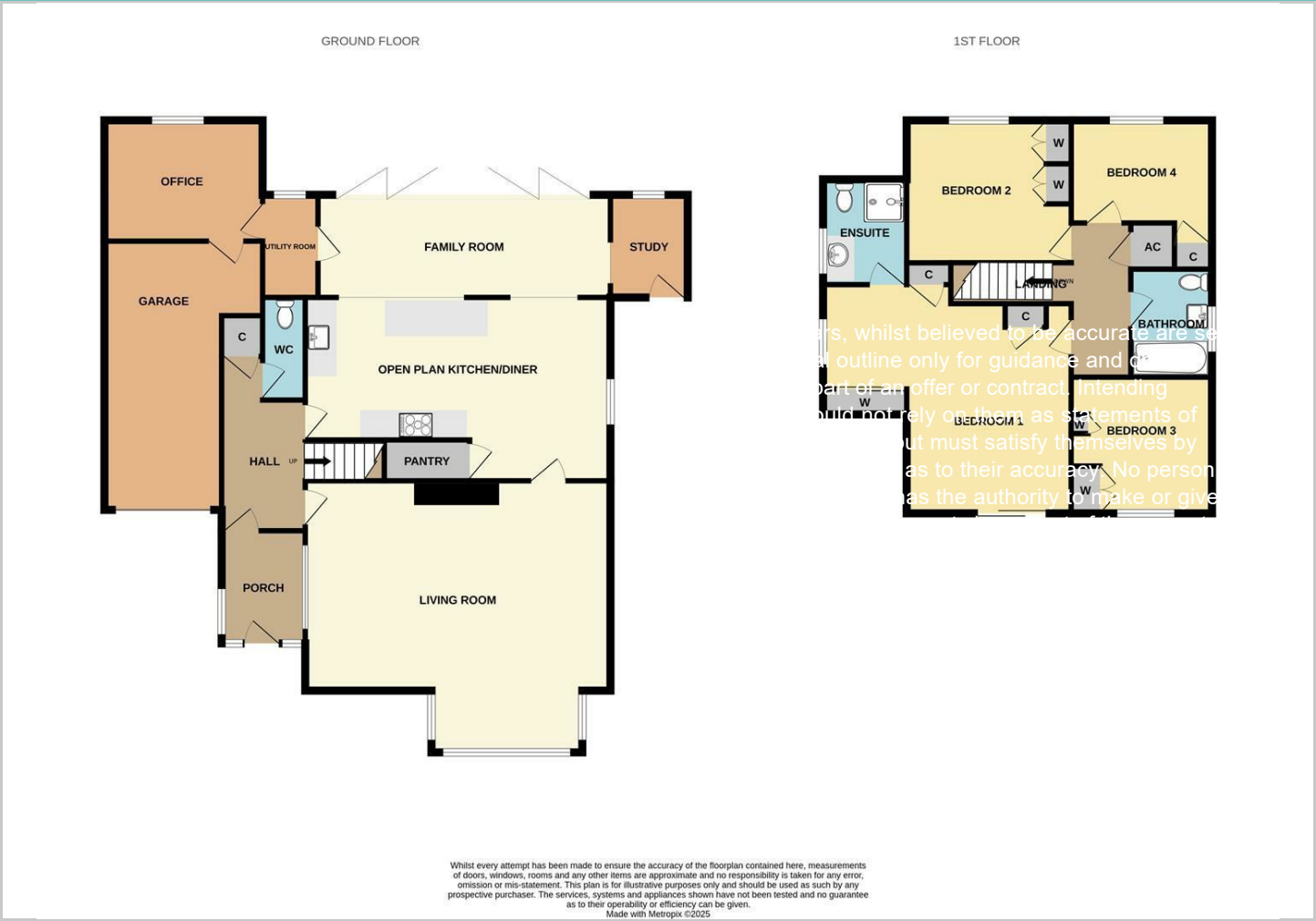
Rear Garden



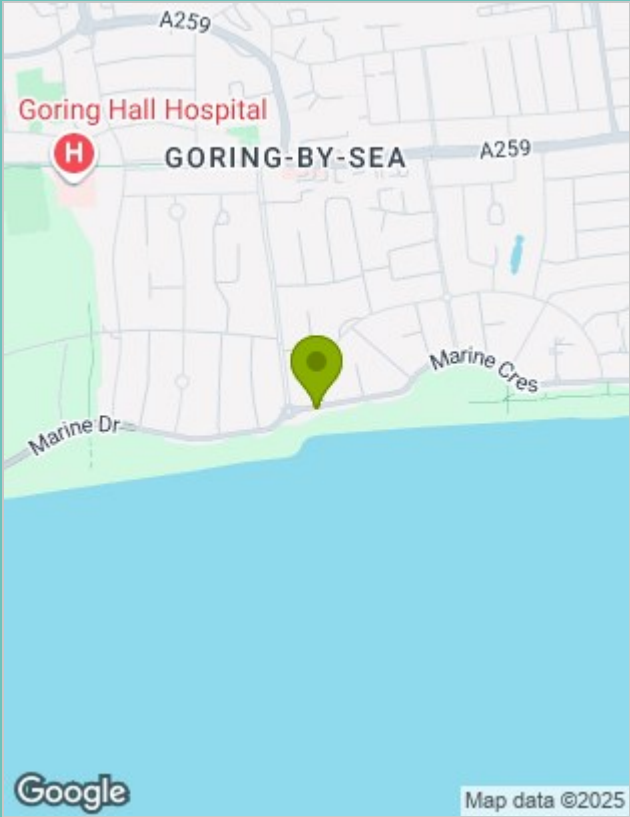




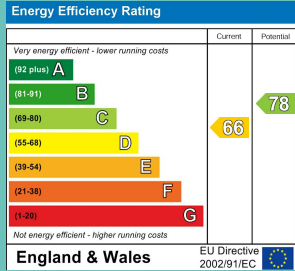
Floor Plans



Location Map



Energy Performance Graph



Please contact our Worthing Office on 01903 958770 if you wish to arrange a viewing appointment for this property or require further information.

These particulars, whilst believed to be accurate are set out as a general outline only for guidance and do not constitute any part of an offer or contract. Intending purchasers should not rely on them as statements of representation of fact, but must satisfy themselves by inspection or otherwise as to their accuracy. No person in this firms employment has the authority to make or give any representation or warranty in respect of the property.