



15 Arlington Avenue, Goring-By-Sea, Worthing, BN12 4SX

Offers over £850,000



15 Arlington Avenue

Goring-By-Sea, Worthing, BN12 4SX

- West facing rear garden
- Close to beach
- No onward chain
- Three reception rooms
- Favoured Goring Hall
- Ample off road parking
- Four double bedroom
- Sole agents

Situated in one of Worthing's most prestigious roads and being a short stroll from the seafront whilst also boasting a West facing garden, we are delighted to bring to the market this substantial four bedroom house forming part of the Goring Hall location.

In brief the accommodation comprises covered entrance, spacious entrance hall, L shaped lounge/sitting room with doors onto conservatory, separate dining room, spacious landing with decorative arched window, four good size bedrooms all double aspect and a modern five piece family bathroom.

Externally there is a West facing rear garden and ample off road parking, a larger than average garage along with an external utility room with Butler sink/boot room.

Other benefits include many original features, gas central heating, and in our opinion internal viewing is considered essential to appreciate the overall size and potential of this forever family home.

Situated in Arlington Avenue, the property is situated close to the beach, the shops in Aldsworth Avenue and Mulberry Parade. Buses also serve the area and the nearest mainline railway station is Goring -by-Sea giving great links to most major towns and cities.



Covered entrance with decorative front door

Entrance hall 9'9 x 14'7 (2.97m x 4.45m)

Triple aspect lounge 22'7 x 12'0 (6.88m x 3.66m)

Arch leading to sitting room 10'4 x 12'6 (3.15m x 3.81m)

Conservatory 8'10 x 11'6 (2.69m x 3.51m)

Dining room 17'0 x 8'11 (5.18m x 2.72m)

Kitchen/breakfast room 13'10 x 12'9 (4.22m x 3.89m)

Outside covered area

Utility room with butler sink 6'4 x 8'0 (1.93m x 2.44m)

Stairs to first floor landing 10'0 x 8'4 (3.05m x 2.54m)

Double aspect bedroom one 13'6 x 12'2 (4.11m x 3.71m)

Double aspect bedroom two 13'11 x 13'4 (4.24m x 4.06m)

Double aspect Bedroom three 12'0 x 12'1 (3.66m x 3.68m)

Double aspect Bedroom four 12'2 x 9'9 (3.71m x 2.97m)

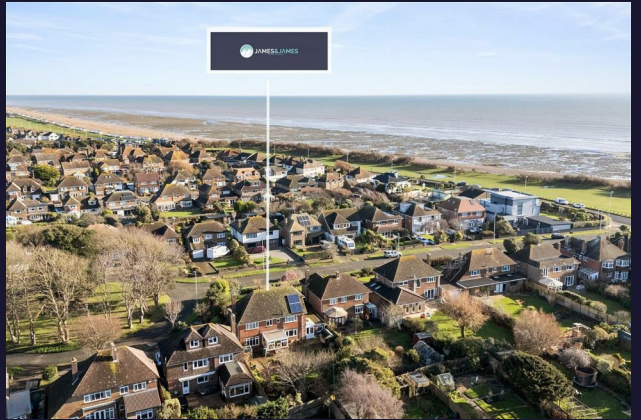
Five piece bath & shower room 8'6 x 10'0 (2.59m x 3.05m)

Feature West facing rear garden

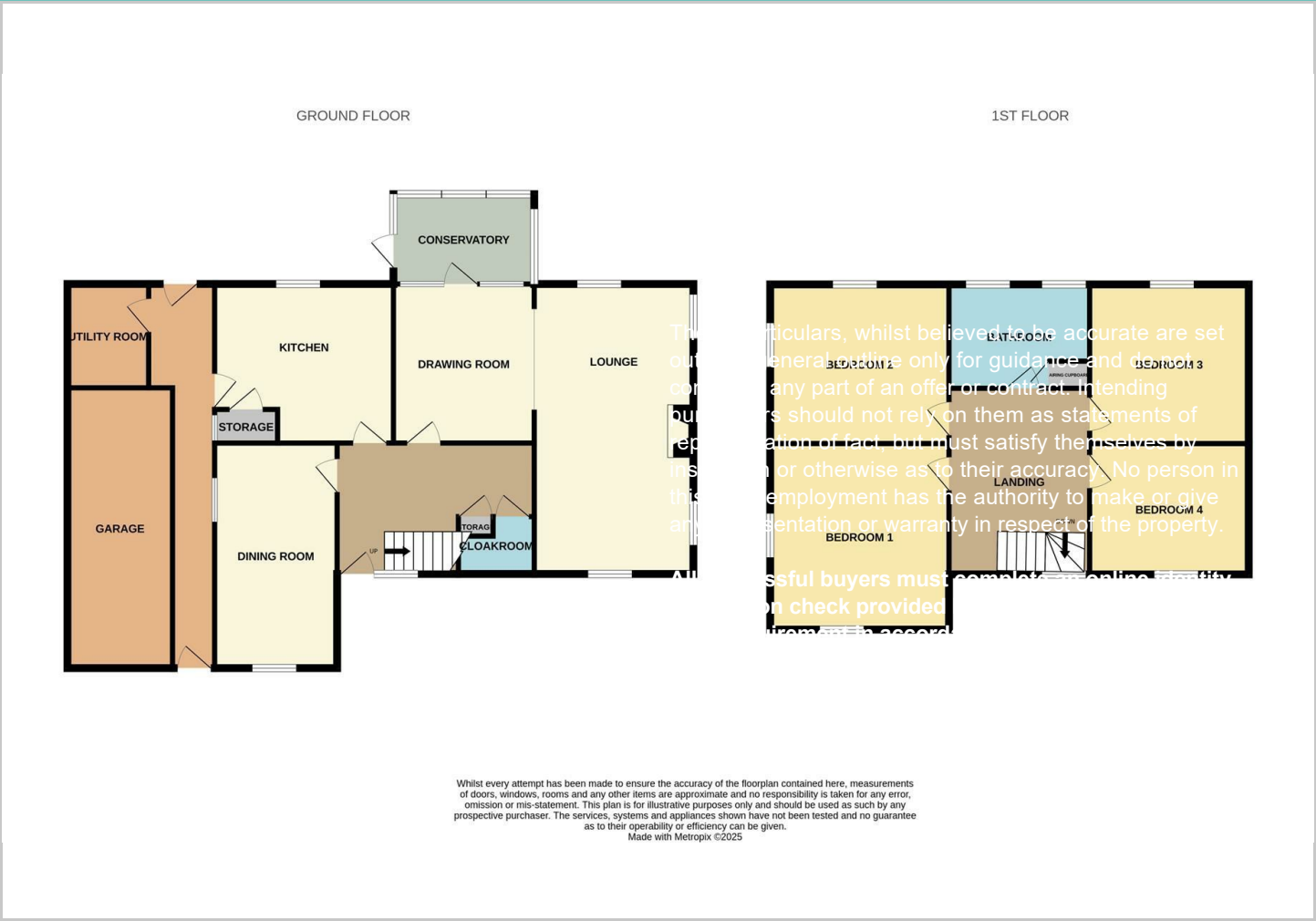
Ample off road parking

Garage 22'6 x 8'10 (6.86m x 2.69m)





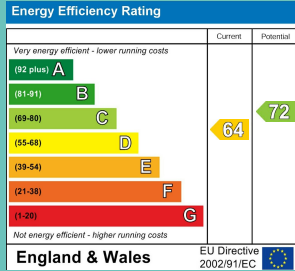
Floor Plans



Location Map



Energy Performance Graph



Please contact our Worthing Office on 01903 958770 if you wish to arrange a viewing appointment for this property or require further information.

These particulars, whilst believed to be accurate are set out as a general outline only for guidance and do not constitute any part of an offer or contract. Intending purchasers should not rely on them as statements of representation of fact, but must satisfy themselves by inspection or otherwise as to their accuracy. No person in this firm's employment has the authority to make or give any representation or warranty in respect of the property.