



22 Nutley Crescent

, Goring by Sea, BN12 4LA

Offers over £600,000

Freehold Council Tax Band

James & James Estate Agents are delighted to bring to the market this completely modernised and well extended chalet style bungalow

In brief the accommodation comprises; Spacious entrance hall, snug/living room, exceptional open plan family/kitchen/dining room. The kitchen itself features a central island, which is surrounded by the comprehensive range of units with stylish door fronts, full integrated appliances and a Corian work surface. There are two double ground floor bedrooms, and a luxury ground floor bathroom.

To the first floor, there is the principal bedroom that has a bespoke range of in-built wardrobe and storage, making perfect use of the eaves space. A further double bedroom is across the landing and then there is a large shower room with a feature walk-in shower. Other benefits include high quality wood effect Karndean flooring throughout most of the ground floor, gas central heating and double glazing. In our opinion, internal viewing is considered essential to appreciate the overall size and condition of this 'forever' home.

Situated in Nutley Crescent this is an ideal location for any growing family being close to the shops at Mulberry Parade, the beach and Goring Greensward, whilst the nearest mainline railway station is Goring-by-Sea giving great links to most major towns and cities. Buses also serve the area.

Entrance porch

Entrance hall

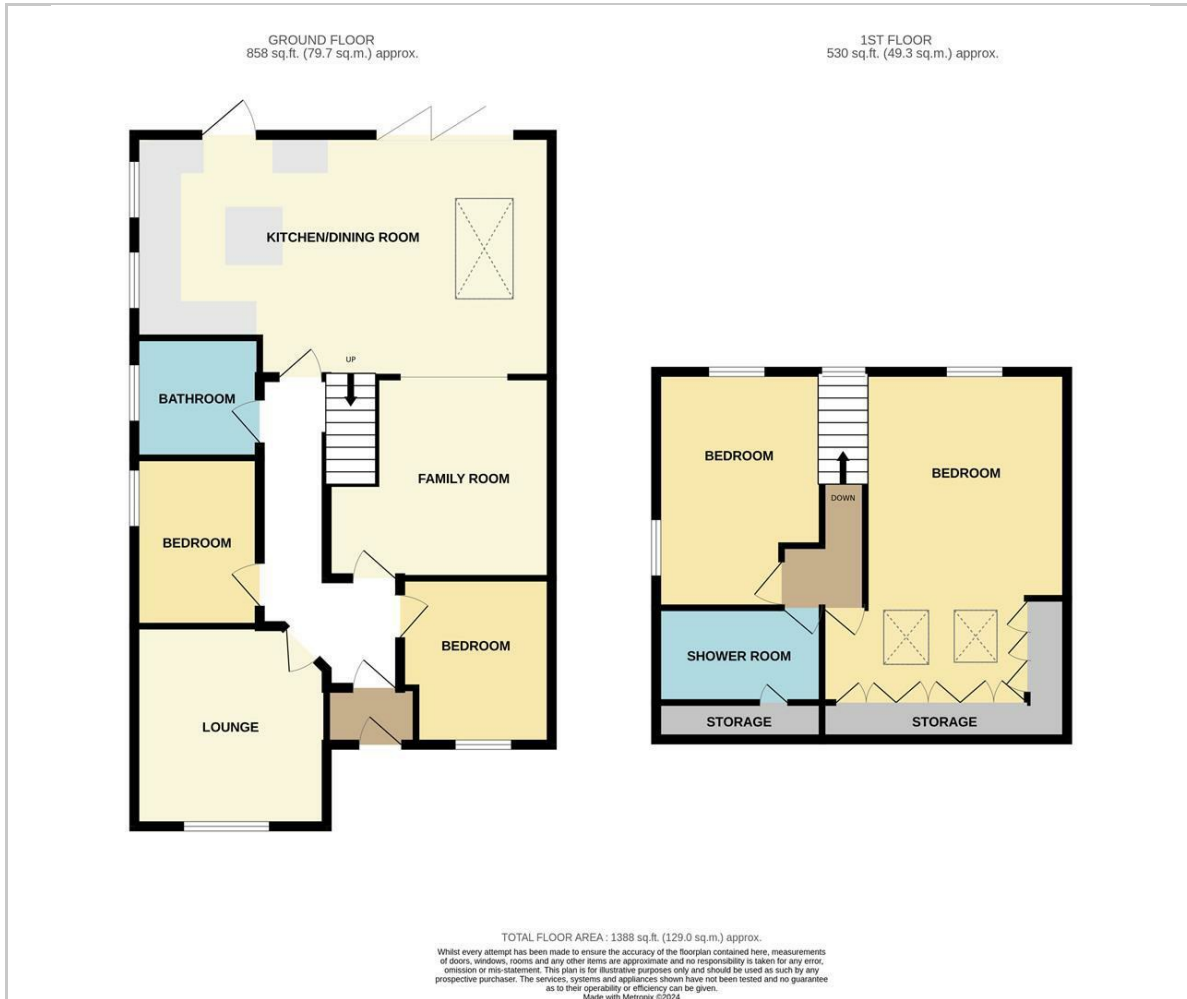




- Ground floor bedroom one
- Family room
- Kitchen/dining room
- Bathroom
- Ground floor bedroom two
- Lounge
- Stairs to first floor landing
- Bedroom two
- Shower room
- Master bedroom



Floor Plan



Viewing

Please contact our James & James Estate Agents Office on 01903 958770 if you wish to arrange a viewing appointment for this property or require further information.

These particulars, whilst believed to be accurate are set out as a general outline only for guidance and do not constitute any part of an offer or contract. Intending purchasers should not rely on them as statements of representation of fact, but must satisfy themselves by inspection or otherwise as to their accuracy. No person in this firm's employment has the authority to make or give any representation or warranty in respect of the property.

Area Map



Energy Efficiency Graph

