

ferguson young

YOUR LOCAL INDEPENDENT ESTATE AGENTS

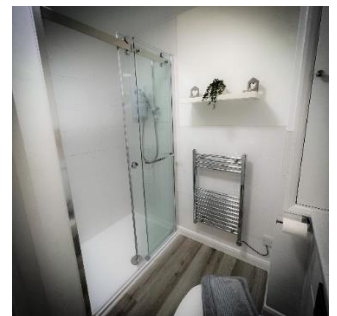
Offers Over £270,000 Leasehold

10 Harbour Court, Portreath, TR16 4NH



- 400M FROM BEACH
- TWO BEDROOMS
- RECENTLY REFURBISHED
- ALLOCATED PARKING
- ELECTRIC CERAMIC RADIATORS
- IMMACULATE PRESENTATION
- SOUGHT AFTER COASTAL VILLAGE
- SHOWER ROOM/WC

An immaculately presented Two Bedroom ground floor purpose built apartment located approximately 400m from the beach at Portreath. Currently used as holiday accommodation. The property has been refurbished throughout to an exacting standard to attract premium clientele but would equally make a beautiful home for the more discerning buyer. The accommodation comprises of: Entrance Hall, Kitchen, Lounge/Dining Room, Shower room/WC and One Double Bedroom and One Single Bedroom. The property is double glazed and heated by centrally controlled modern electric ceramic radiators. There is parking for one vehicle in the car park. The apartment is sold furnished as seen. EPC: D. Council Tax TBA (currently on business rates as used as a holiday let)



01209 219911

www.fergusonyoung.co.uk

sales@fergusonyoung.co.uk

10 Harbour Court, Portreath, TR16 4NH

Approached via a pathway leading to a secure communal entrance.

COMMUNAL ENTRANCE

There are stairs rising to the first floor and a door to the inner hallway with a solid front door opening to:-

ENTRANCE HALL

There are doors to all rooms and a built in storage cupboard.

KITCHEN

10'5" x 7'5" (3.18m x 2.26m)

A beautiful modern kitchen with a range of base and eyelevel units with complimentary work surface over, inset single asterite sink with side drainer, built in electric oven, built in microwave, inset induction hob with extractor over, space for an upright fridge/freezer, space for a washing machine. There is a double glazed window to the side and the kitchen opens to:-

LOUNGE/DINING ROOM

17'10" x 13'7" (5.44m x 4.14m)

A bright and airy room with double glazed windows to the front and patio doors opening to a sun terrace. There is a ceramic radiator and TV aerial point

BEDROOM ONE

10'8" x 10'8" (3.25m x 3.25m)

A generous sized double bedroom with built in. There is a double glazed window to the rear and a ceramic radiator.

BEDROOM TWO

10'0" x 6'9" (3.05m x 2.06m)

A good sized single bedroom. There is wardrobe, wall mounted panel heater and a double glazed window to the rear.

SHOWER ROOM/WC

A modern suite comprising of a double width shower enclosure with electric shower over, WC with hidden cistern, wash hand basin set in a vanity unit, two built in cupboards and extractor.

OUTSIDE

There is a patio area to the front of the property with space for table and chairs etc.

PARKING

There is one allocated parking space for the property.

AGENTS NOTE

The property is sold furnished as seen,

Please note the Television and Sound Bar are not included in the sale.

There are 964 years remaining on the lease and the maintenance charge is £185 per month.

SERVICES

The property is connected to mains electricity, water and drainage.

Mobile coverage is available on 3 O2 & Vodafone.

Broadband speeds from 8Mbps basic and 80Mbps Superfast.

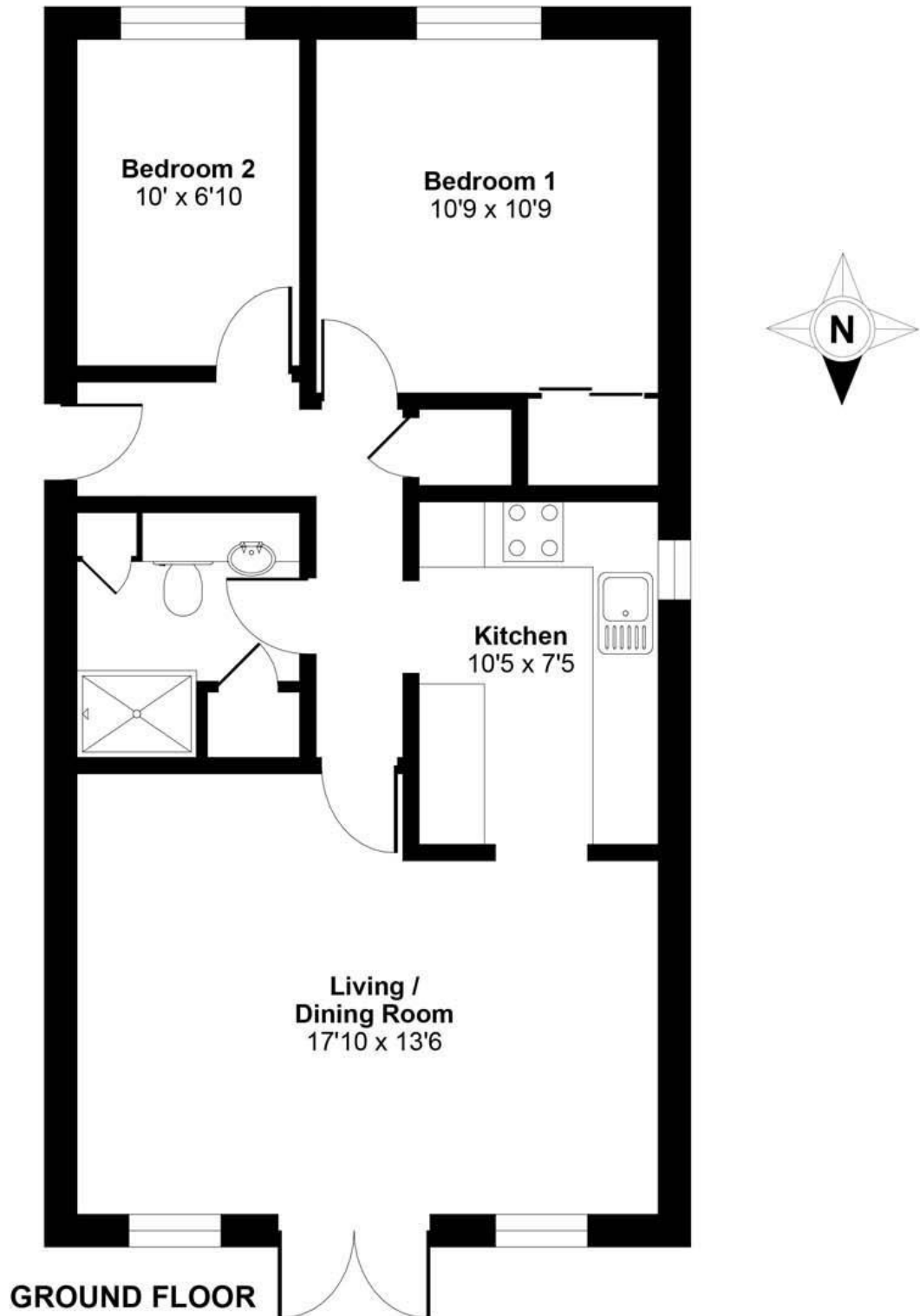


General: While we endeavour to make our sales particulars fair, accurate and reliable, they are only a general guide to the property and, accordingly, if there is any point which is of particular importance to you, please contact the office and we will be pleased to check the position for you, especially if you are contemplating travelling some distance to view the property. Measurements: These approximate room sizes are only intended as general guidance. You must verify the dimensions carefully before ordering carpets or any built-in furniture. Services: Please note we have not tested the services or any of the equipment or appliances in this property, accordingly we strongly advise prospective buyers to commission their own survey or service reports before finalizing their offer to purchase. THESE PARTICULARS ARE ISSUED IN GOOD FAITH BUT DO NOT CONSTITUTE REPRESENTATIONS OF FACT OR FORM PART OF ANY OFFER OR CONTRACT. THE MATTERS REFERRED TO IN THESE PARTICULARS SHOULD BE INDEPENDENTLY VERIFIED BY PROSPECTIVE BUYERS OR TENANTS. NEITHER FERGUSON YOUNG NOR ANY OF ITS EMPLOYEES OR AGENTS HAS ANY AUTHORITY TO MAKE OR GIVE ANY REPRESENTATION OR WARRANTY WHATEVER IN RELATION TO THIS PROPERTY.

Harbour Court, Portreath, Redruth

Approximate Area = 642 sq ft / 59.6 sq m

For identification only - Not to scale



Certified
Property
Measurer

Floor plan produced in accordance with RICS Property Measurement Standards incorporating International Property Measurement Standards (IPMS2 Residential). © n'checon 2021. Produced for Lillcrap & Chilcott. REF: 778023