



REID RESIDENTIAL

FOR SOME MUCH NEEDED R&R
WHEN SELLING YOUR HOME



20 Adelaide Street
Harwich, CO12 4PL

Asking price **£180,000**



20 Adelaide Street Harwich, CO12 4PL

Guide Price - £180,000 - £190,000.

Nestled in the charming Adelaide Street of Harwich, this delightful house offers a perfect blend of comfort and style. As you step inside, you are greeted by two inviting reception rooms, ideal for entertaining guests or simply unwinding after a long day.

The property boasts two large double bedrooms, providing ample space for relaxation and rest. The first floor bathroom ensures convenience and privacy for all residents. With a total of 645 sq ft, this house offers a comfortable living space for you to make your own.

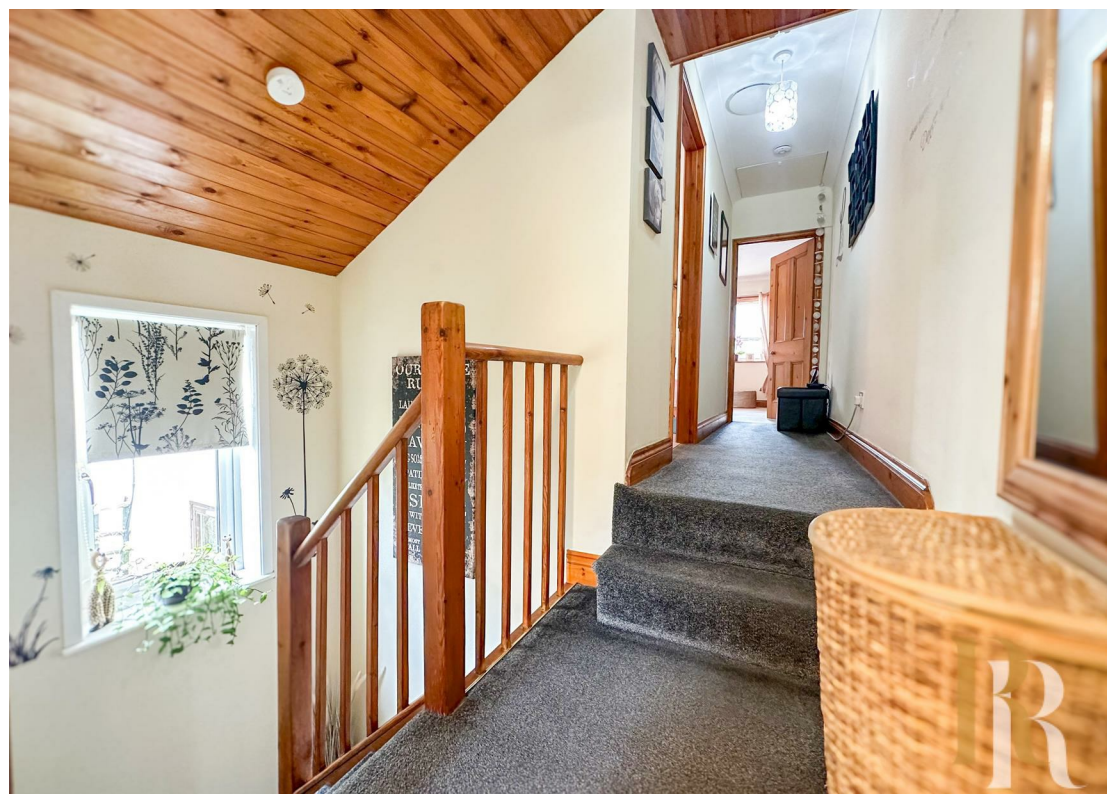
One of the highlights of this property is the immaculately well-kept lounge, dining, and kitchen area, creating a seamless flow throughout the home. The utility room leads out to a stunning garden filled with vibrant flowers, offering a tranquil escape from the hustle and bustle of everyday life.

Whether you are looking for a new home or an investment opportunity, this property ticks all the boxes. With a tenant already in place, this could be the perfect chance to step into the world of property investment effortlessly.

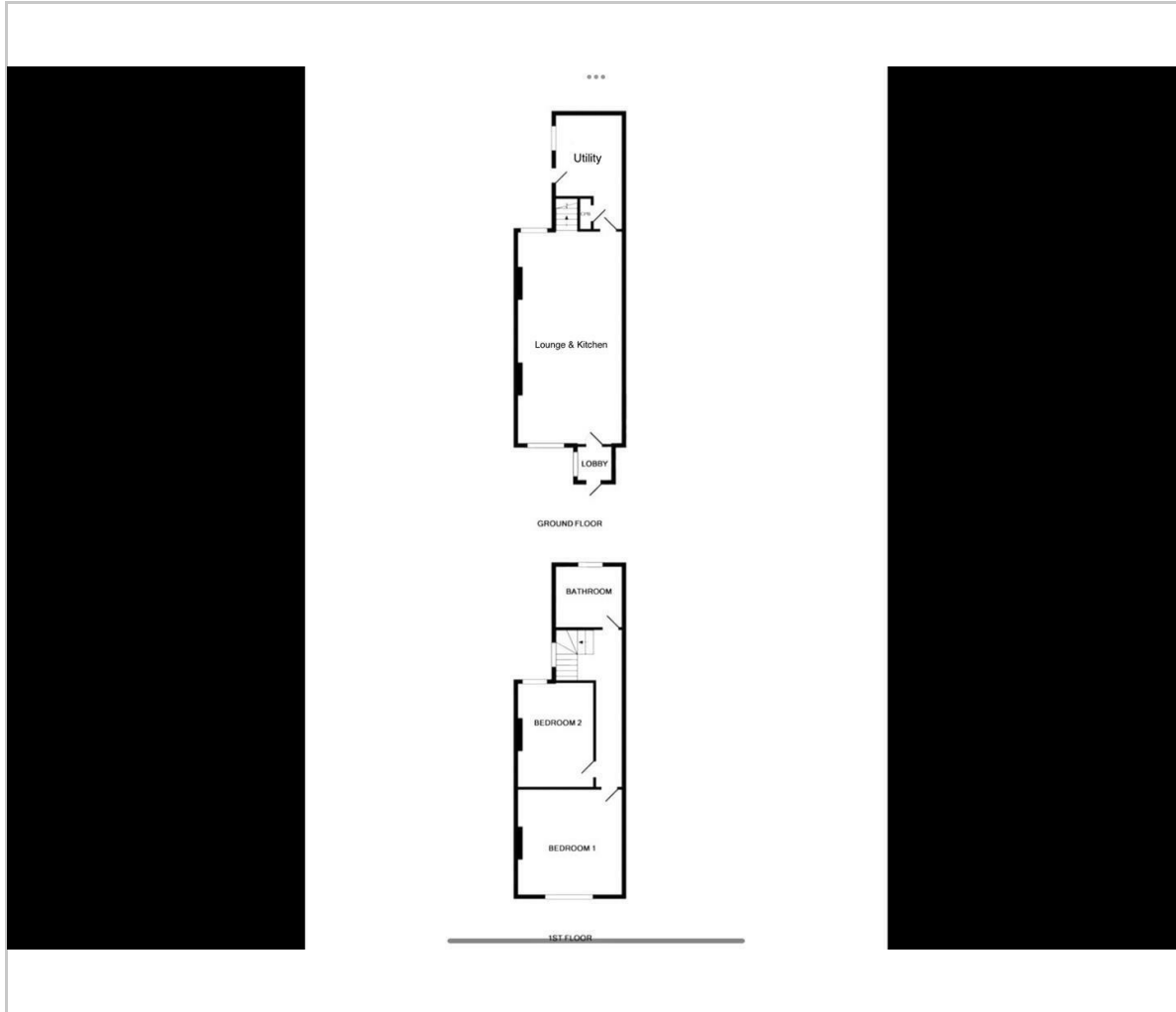
Don't miss out on the opportunity to make this house your home. Book a viewing today and experience the charm and comfort this property has to offer.

Area Guide: The blue flag beach is adjacent to the home and there are many activities for a range of ages. From watching the ships sail in with a bag of chips at the front, to fine dining at the renowned Harwich Pier Restaurant and Thai Up At The Quay which has been rewarded best restaurant at the Essex Awards. Dovercourt Town offers an array of amenities from small independent shops to larger chains. There are two railway stations close by, both of which offer links to London Liverpool Street. Primary and secondary schooling is also with easy access.





Floor Plan



Viewing

Please contact our Reid Residential Office on 01255 408055 if you wish to arrange a viewing appointment for this property or require further information.

These particulars, whilst believed to be accurate are set out as a general outline only for guidance and do not constitute any part of an offer or contract. Intending purchasers should not rely on them as statements of representation of fact, but must satisfy themselves by inspection or otherwise as to their accuracy. No person in this firm's employment has the authority to make or give any representation or warranty in respect of the property.

Area Map



Energy Efficiency Graph

