



REID RESIDENTIAL

FOR SOME MUCH NEEDED R&R
WHEN SELLING YOUR HOME



12 Keynes Way
Harwich, CO12 3UA

Guide price £325,000



12 Keynes Way
Harwich, CO12 3UA

Guide Price £325,000 - £350,000. Nestled into a quiet cul-de-sac, within the the very sought after area of Lower Dovercourt, just a short stroll from the award winning beaches and stunning coastal walks, this beautifully kept detached bungalow offers two double bedrooms, a large open plan reception with plenty of space for a seated dining area and a well maintained, well equipped kitchen with built in appliances. This detached bungalow is light and airy throughout and offers spacious rooms, alongside a beautiful outdoor space, with south facing sun terrace, decorative borders and raised flowered beds. The garden is a real sun trap and is the perfect place to relax of an evening. With the added benefit of a large conservatory and garage with



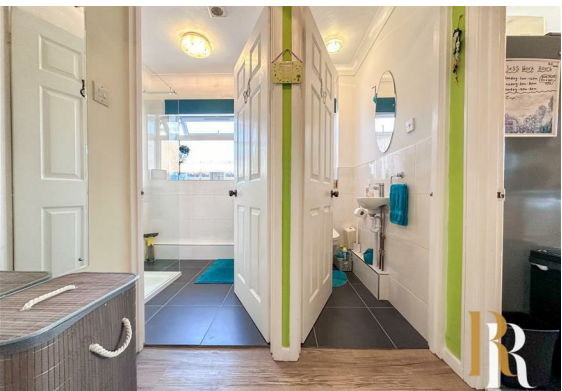


additional space for parking on the driveway, this detached bungalow is a must see for those looking for a place near the sea.

Area Guide: The blue flag beach is within close proximity to the home and there are many activities for a range of ages. From watching the ships sail in with a bag of chips at the front, to fine dining at the renowned Harwich Pier Restaurant and Thai Up At The Quay which has been rewarded best restaurant at the Essex Awards. Dovercourt Town offers an array of amenities from small independent shops to larger chains. There are two railway stations close by, both of which offer links to London Liverpool Street. Primary and secondary schooling is also with easy access.



There is a wide range of clubs including two sailing clubs, sea scouts, swimming and sports centre to name a few. During the summer Harwich hosts a number of festivals which really ignite the community spirit, providing enjoyable days out for all of the family. The Electric Palace cinema, Harwich, is one of the oldest purpose-built cinemas in the country and regularly shows films and live streamed events.



Floor Plan



Viewing

Please contact our Reid Residential Office on 01255 408055 if you wish to arrange a viewing appointment for this property or require further information.

These particulars, whilst believed to be accurate are set out as a general outline only for guidance and do not constitute any part of an offer or contract. Intending purchasers should not rely on them as statements of representation of fact, but must satisfy themselves by inspection or otherwise as to their accuracy. No person in this firm's employment has the authority to make or give any representation or warranty in respect of the property.

Area Map



Energy Efficiency Graph

