



REID RESIDENTIAL

FOR SOME MUCH NEEDED R&R
WHEN SELLING YOUR HOME



23 Dove Crescent
Harwich, CO12 4QY

£270,000



23 Dove Crescent
Harwich, CO12 4QY

Guide Price £270,000 - £280,000. Situated in a very popular location, set back from the road behind a block paved driveway which provides off road parking for several cars and presented beautifully throughout, this Two double bedroom bungalow is spacious, light and feels like home from the moment you enter. Offering a wide entrance hallway with natural light pouring through the home and a modern kitchen with appliances, this lovely semi detached home is a must see for those looking for something they can move straight into and enjoy the peace and quiet of being on such a lovely road. Both bedrooms are a good size and offer ample storage, with the lounge found towards the rear of the home giving you a cosy feel and access to a sunny garden room with





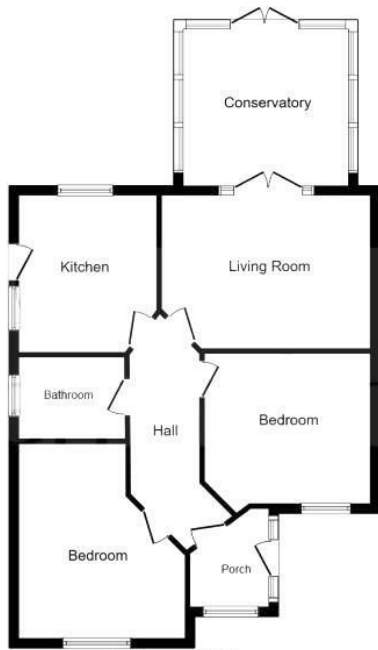
views across the garden. The kitchen and shower room are both modern and stylish and include everything you need, finished with contemporary fittings and well planned interiors.

Area Guide: The blue flag beach is adjacent to the home and there are many activities for a range of ages. From watching the ships sail in with a bag of chips at the front, to fine dining at the renowned Harwich Pier Restaurant and Thai Up At The Quay which has been rewarded best restaurant at the Essex Awards. Dovercourt Town offers an array of amenities from small independent shops to larger chains. There are two railway stations close by, both of which offer links to London Liverpool Street. Primary and secondary schooling is also with easy access.



There is a wide range of clubs including two sailing clubs, sea scouts, swimming and sports centre to name a few. During the summer Harwich hosts a number of festivals which really ignite the community spirit, providing enjoyable days out for all of the family. The Electric Palace cinema, Harwich, is one of the oldest purpose-built cinemas in the country and regularly shows films and live streamed events.

Floor Plan



Floor Plan

This floor plan is for illustrative purposes only. It is not drawn to scale. Any measurements, floor areas (including any total floor area), openings and orientation are approximate. No details are guaranteed, they cannot be relied upon for any purpose and they do not form part of any agreement. No liability is taken for any error, omission or misstatement. A party must rely upon its own inspection(s).
Plan produced for William H Brown. Powered by www.focalagent.com

Viewing

Please contact our Reid Residential Office on 01255 408055 if you wish to arrange a viewing appointment for this property or require further information.

These particulars, whilst believed to be accurate are set out as a general outline only for guidance and do not constitute any part of an offer or contract. Intending purchasers should not rely on them as statements of representation of fact, but must satisfy themselves by inspection or otherwise as to their accuracy. No person in this firm's employment has the authority to make or give any representation or warranty in respect of the property.

Area Map



Energy Efficiency Graph

