



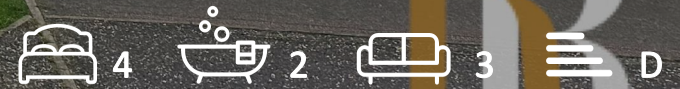
REID RESIDENTIAL

FOR SOME MUCH NEEDED R&R
WHEN SELLING YOUR HOME



52 Hewitt Road
Harwich, CO12 5DZ

Offers in excess of £425,000



52 Hewitt Road
Harwich, CO12 5DZ

This spacious four double bedroom detached home is situated in the sought after location of Ramsey, nestled between the ever popular Little Oakley and offering convenient access into Dovercourt. This extended family home is presented in excellent order with room enough for a growing family, offering parking for several vehicles, four good sized bedrooms with an ensuite to the master bedroom, three reception rooms and fully enclosed, double width rear garden. Offering a double garage, which can be used for storage, parking or converting into living space, subject to planning, not only does this spacious home offer room in abundance, but also offers potential. The double length reception is bright & airy and features a cosy log burner, with the spacious entrance hallway and roomy first floor landing giving access to well sized rooms and vast amounts of



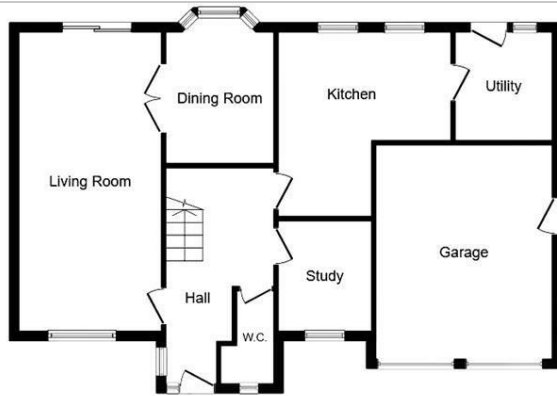


space throughout the whole home. Externally, the garden is yet another great feature to this fantastic family home. A viewing is highly advised.

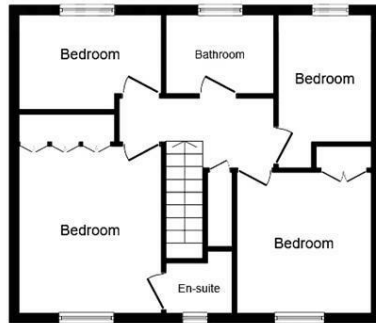
Area Guide: Area Guide: The blue flag beach is within close proximity to the home and there are many activities for a range of ages. From watching the ships sail in with a bag of chips at the front, to fine dining at the renowned Harwich Pier Restaurant and Thai Up At The Quay which has been rewarded best restaurant at the Essex Awards. Dovercourt Town offers an array of amenities from small independent shops to larger chains. There are two railway stations close by, both of which offer links to London Liverpool Street. Primary and secondary schooling is also with easy access.

There is a wide range of clubs including two sailing clubs, sea scouts, swimming and sports centre to name a few. During the summer Harwich hosts a number of festivals which really ignite the community spirit, providing enjoyable days out for all of the family. The Electric Palace cinema, Harwich, is one of the oldest purpose-built cinemas in the country.

Floor Plan



Ground Floor



First Floor

This floor plan is for illustrative purposes only. It is not drawn to scale. Any measurements, floor areas (including any total floor area), openings and orientation are approximate. No details are guaranteed, they cannot be relied upon for any purpose and they do not form part of any agreement. No liability is taken for any error, omission or misstatement. A party must rely upon its own inspection(s). Plan produced for William H Brown. Powered by www.focalagent.com

Viewing

Please contact our Reid Residential Office on 01255 408055 if you wish to arrange a viewing appointment for this property or require further information.

These particulars, whilst believed to be accurate are set out as a general outline only for guidance and do not constitute any part of an offer or contract. Intending purchasers should not rely on them as statements of representation of fact, but must satisfy themselves by inspection or otherwise as to their accuracy. No person in this firm's employment has the authority to make or give any representation or warranty in respect of the property.

Area Map



Energy Efficiency Graph

