



REID RESIDENTIAL

FOR SOME MUCH NEEDED R&R
WHEN SELLING YOUR HOME



9 The Dales
Harwich, CO12 4XH

Guide price £300,000



4



1



1



D

9 The Dales
Harwich, CO12 4XH

Guide Price £300,000 - £325,000. Nestled within a quiet cul-de-sac and enjoying an elevated corner plot with lovely wrap around gardens, this beautifully presented four bedroom family home backs onto wide open green spaces and even boasts a view of the local coastline from the first floor. The South West facing gardens are a real sun trap and this beautiful outside space has been cleverly designed with sun lovers in mind. The detached garage has been split into a helpful storage space and even more helpful home office, with a vegetable plot, pergola & two sun drenched seating areas completing the outdoors. Heading inside, you find a thoughtful layout, with a bathroom on both floors, four well sized bedrooms with fantastic views of the local scenery, an L shaped reception space and a separate dining/breakfast room that opens into a stylish kitchen with





modern appliances. The whole home is beautifully kept throughout, offering natural light from top to bottom and a converted loft adds yet more space to an already spacious home.

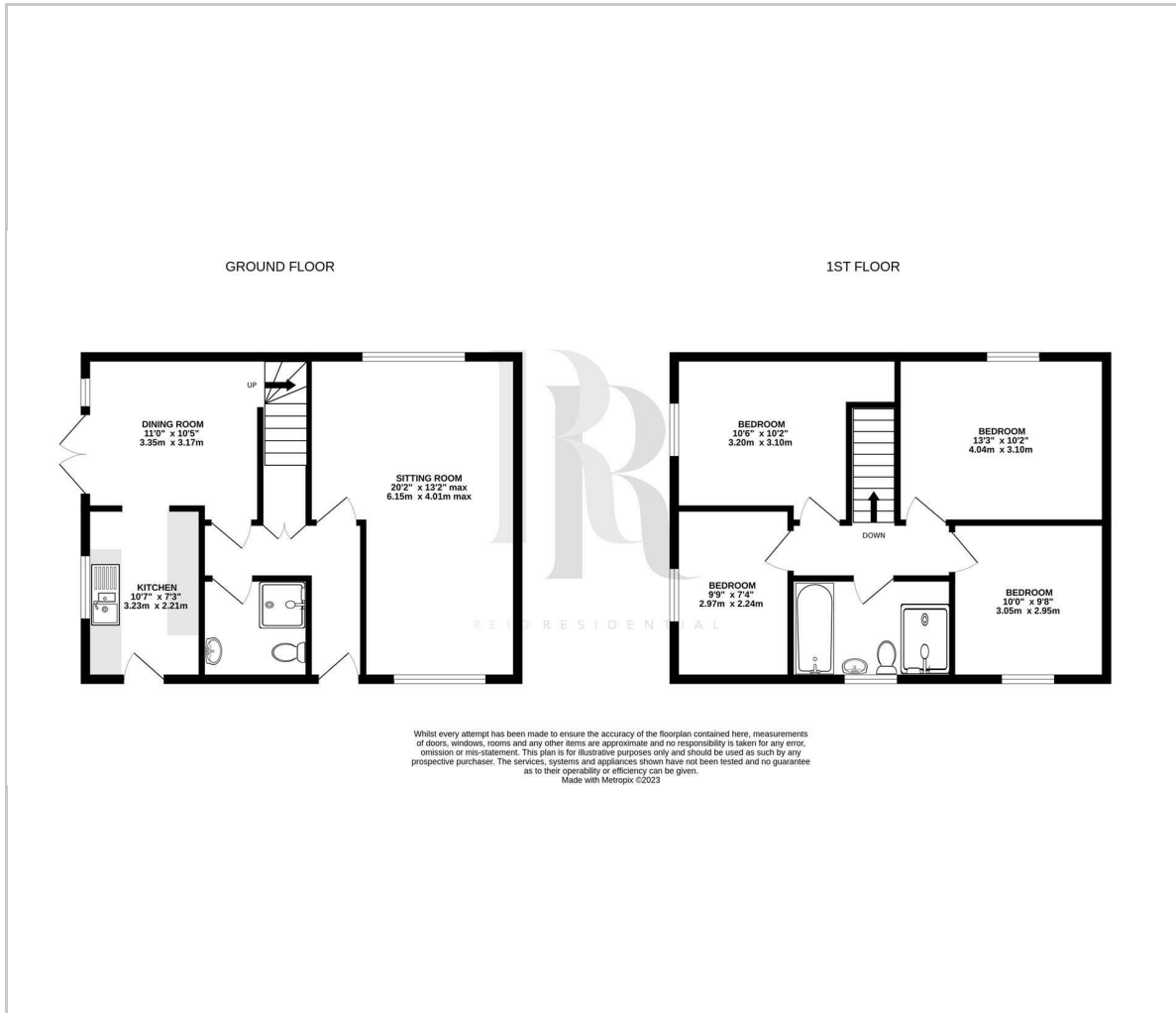
Area Guide: The blue flag beach is adjacent to the home and there are many activities for a range of ages. From watching the ships sail in with a bag of chips at the front, to fine dining at the renowned Harwich Pier Restaurant and Thai Up At The Quay which has been rewarded best restaurant at the Essex Awards. Dovercourt Town offers an array of amenities from small independent shops to larger chains. There are two railway stations close by, both of which offer links to London Liverpool Street. Primary and secondary schooling is also with easy access.



There is a wide range of clubs including two sailing clubs, sea scouts, swimming and sports centre to name a few. During the summer Harwich hosts a number of festivals which really ignite the community spirit, providing enjoyable days out for all of the family. The Electric Palace cinema, Harwich, is one of the oldest purpose-built cinemas in the country and regularly shows films.



Floor Plan

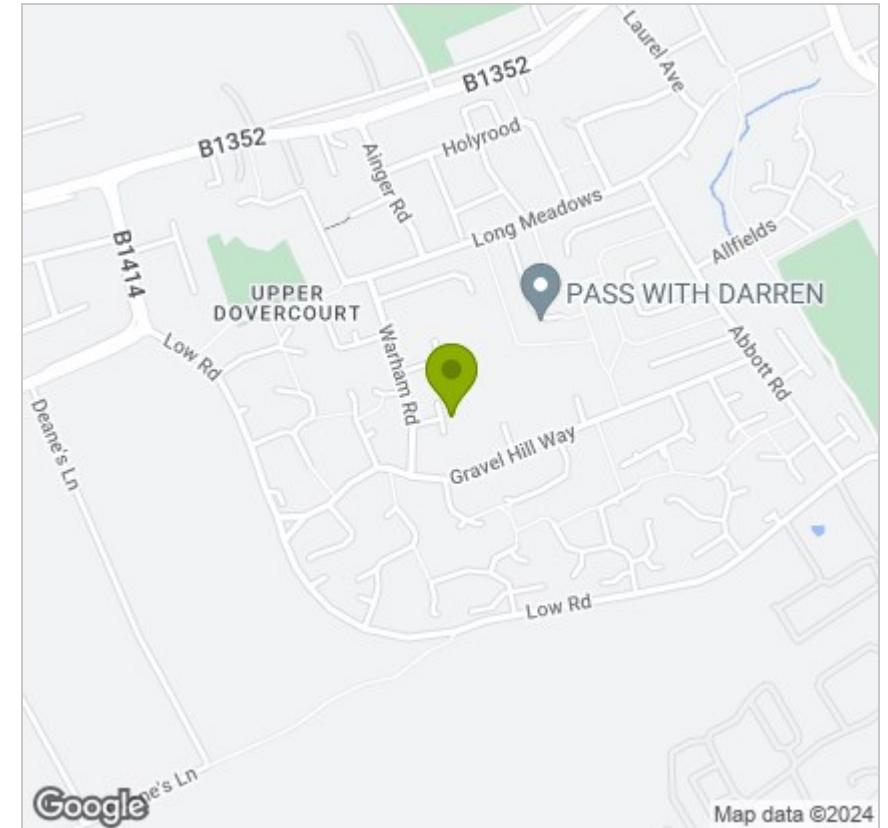


Viewing

Please contact our Reid Residential Office on 01255 408055 if you wish to arrange a viewing appointment for this property or require further information.

These particulars, whilst believed to be accurate are set out as a general outline only for guidance and do not constitute any part of an offer or contract. Intending purchasers should not rely on them as statements of representation of fact, but must satisfy themselves by inspection or otherwise as to their accuracy. No person in this firm's employment has the authority to make or give any representation or warranty in respect of the property.

Area Map



Energy Efficiency Graph

