

ANWYL
thoughtful homes

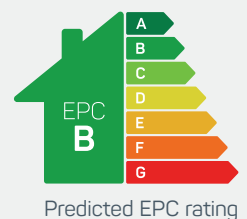


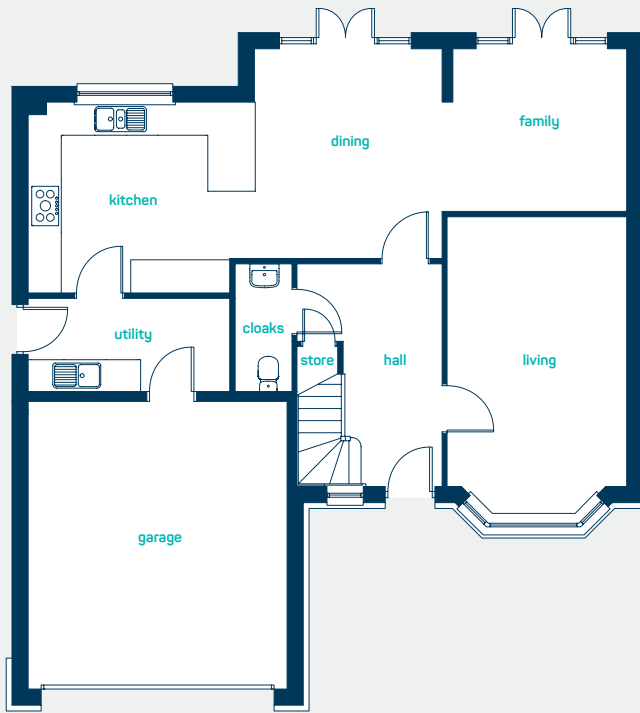
the bowdon

5 bed detached

A *large* and spacious detached 5 bedroom house, ideal for families.
Key features include a double garage, 2 en-suite bedrooms with fitted wardrobes.
An open plan kitchen/dining/family area with separate living room and utility.

www.anwylhomes.co.uk





 ideal for growing families

ground floor

kitchen/dining /family 36'11" x 12'10"
 living room (inc bay) 18'5" x 11'0"
 cloaks 7'10" x 3'6"
 utility 12'4" x 5'8"

kitchen/dining /family 11.26m x 3.91m
 living room (inc bay) 5.61m x 3.34m
 cloaks 2.39m x 1.06m
 utility 3.76m x 1.74m



first floor

bedroom 1 22'2" x 15'11"
 en-suite 1 7'2" x 7'1"
 bedroom 2 14'3" x 9'8"
 en-suite 2 8'4" x 6'11"
 bedroom 3 13'2" x 11'10"
 bedroom 4 11'10" x 10'2"
 bedroom 5 9'8" x 7'5"
 bathroom 9'2" x 7'3"

bedroom 1 6.75m x 4.85m
 en-suite 1 2.18m x 2.15m
 bedroom 2 4.35m x 2.95m
 en-suite 2 2.55m x 2.11m
 bedroom 3 4.02m x 3.60m
 bedroom 4 3.60m x 3.09m
 bedroom 5 2.95m x 2.25m
 bathroom 2.80m x 2.21m

the bowdon
 5 bed detached house

ANWYL
 thoughtful homes

NEW HOMES QUALITY CODE

NEW HOMES OMBUDSMAN SERVICE

www.anwylhomes.co.uk

Anwyl Homes is a Registered Developer with the NHQB. This is a computer-generated image of the bowdon, elevation treatment may vary. Room sizes are approximate, dimensions are taken from the longest room point (please consult homes advisor for measurement points). Plots may be handed and any garages may be single or double. Kitchen and bathroom layouts are indicative. These plans are correct at the time of going to press, but may be subject to change during construction. Please ensure that you check for specific plot details. 01/11/22.

everything considered.