

ANWYL  
thoughtful homes

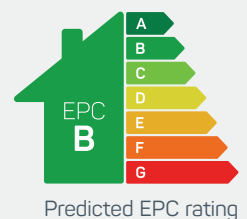


## the oakmere

4 bed detached

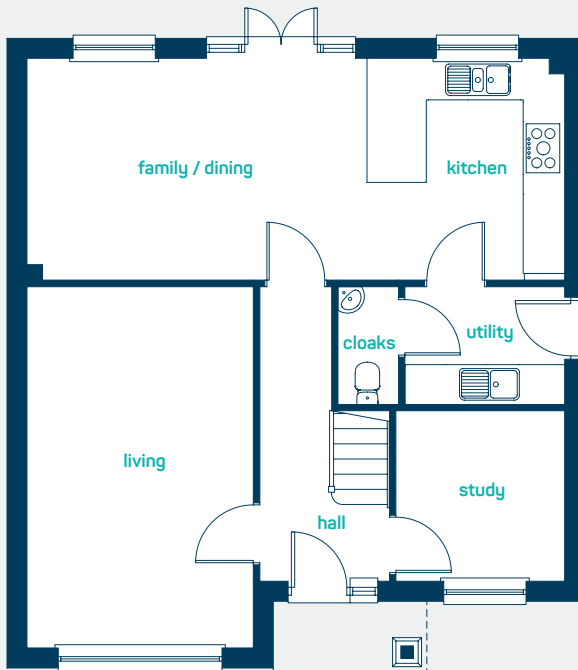
An *impressive* 4 bedroom detached home, ideal for families. Key features include large open plan kitchen, dining and family room with a separate living room, utility and study.

[www.anwylhomes.co.uk](http://www.anwylhomes.co.uk)



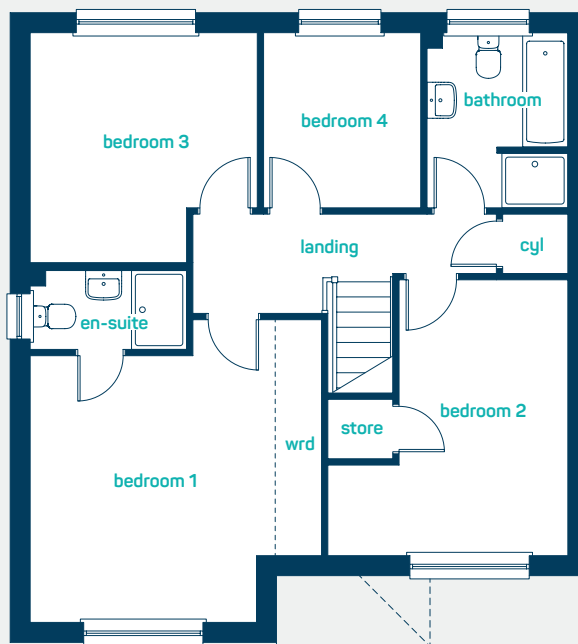


feature  
high ceilings



### ground floor

kitchen/dining	26'7" x 10'11"
utility	7'11" x 5'9"
living room	17'10" x 11'1"
study	8'5" x 8'4"
cloaks	5'9" x 3'0"
kitchen/dining	8.11m x 3.32m
utility	2.40m x 1.76m
living room	5.43m x 3.38m
study	2.56m x 2.54m
cloaks	1.76m x 0.92m



### first floor

bedroom 1	15'0" x 14'5"
en-suite	7'9" x 3'11"
bedroom 2	13'8" x 11'10"
bedroom 3	11'4" x 11'3"
bedroom 4	8'8" x 7'10"
bathroom	8'8" x 6'11"
bedroom 1	4.57m x 4.40m
en-suite	2.35m x 1.20m
bedroom 2	4.16m x 3.62m
bedroom 3	3.46m x 3.42m
bedroom 4	2.63m x 2.38m
bathroom	2.63m x 2.11m

**the oakmere**  
4 bed detached

**ANWYL**  
thoughtful homes

**NEW  
HOMES  
QUALITY  
CODE**

**NEW HOMES  
OMBUDSMAN  
SERVICE**

[www.anwylhomes.co.uk](http://www.anwylhomes.co.uk)

Anwyl Homes is a Registered Developer with the NHQB. This is a computer-generated image of the oakmere, elevation treatment may vary. Room sizes are approximate, dimensions are taken from the longest room point (please consult homes advisor for measurement points). Plots may be handed and any garages may be single or double. Kitchen and bathroom layouts are indicative. These plans are correct at the time of going to press, but may be subject to change during construction. Please ensure that you check for specific plot details. 01/11/22.

*everything considered.*