

ANWYL
thoughtful homes

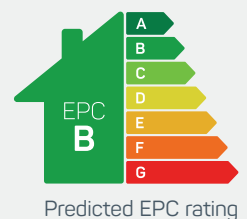


the cheltenham

4 bed detached

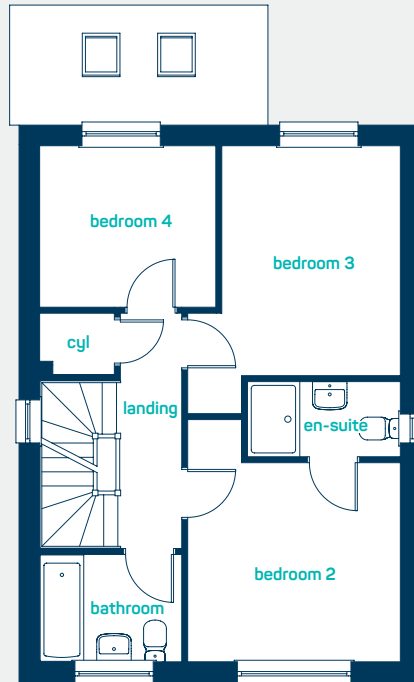
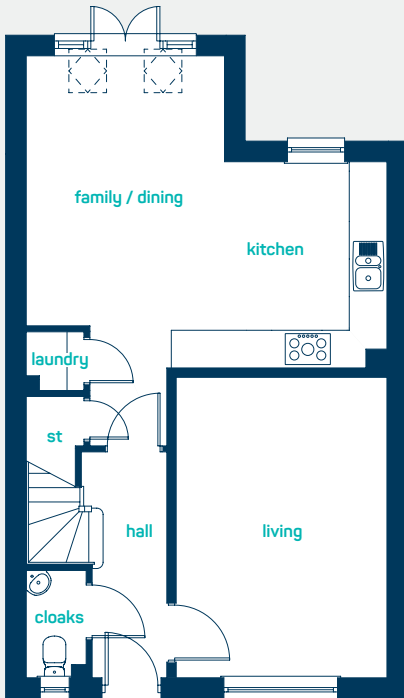
Spacious and thoughtfully designed accommodation over 3 floors. Ideal for growing families. Key features include an impressive master suite and shower room on the top floor offering the perfect place to unwind. A further en-suite shower room and family bathroom ensure that even busy times are a pleasure.

www.anwylhomes.co.uk



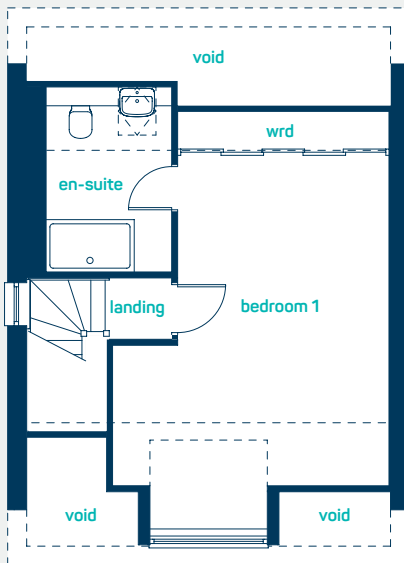


ideal for
growing families



ground floor

kitchen/dining /family	18'10" x 16'4"
living room	15'9" x 11'0"
laundry cupboard	3'1" x 3'0"
cloaks	5'7" x 3'2"
kitchen/dining /family	5.75m x 4.97m
living room	4.79m x 3.36m
laundry cupboard	0.94m x 0.92m
cloaks	1.71m x 0.96m



first floor

bedroom 2	11'1" x 10'5"
en-suite 2	8'0" x 3'11"
bedroom 3	12'0" x 11'1"
bedroom 4	9'3" x 8'5"
bathroom	7'5" x 5'7"
bedroom 2	3.39m x 3.17m
en-suite 2	2.44m x 1.20m
bedroom 3	3.66m x 3.39m
bedroom 4	2.81m x 2.57m
bathroom	2.26m x 1.71m

second floor

bedroom 1	21'11" x 14'5"
en-suite 1	10'0" x 6'7"
bedroom 1	6.68m x 4.40m
en-suite 1	3.05m x 2.00m

the cheltenham
4 bed detached

ANWYL
thoughtful homes

NEW HOMES QUALITY CODE

NEW HOMES OMBUDSMAN SERVICE

www.anwylhomes.co.uk

Anwyl Homes is a Registered Developer with the NHQB. This is a computer-generated image of the cheltenham, elevation treatment may vary. Room sizes are approximate, dimensions are taken from the longest room point (please consult homes advisor for measurement points). Plots may be handed and any garages may be single or double. Kitchen and bathroom layouts are indicative. These plans are correct at the time of going to press, but may be subject to change during construction. Please ensure that you check for specific plot details. 01/11/22.

everything considered.