



**£1,275 PCM**  
**Parkway Gardens**  
Welwyn Garden City, AL8 6JW



## PROPERTY SUMMARY

Situated on the favoured West Side of Welwyn Garden City this one double bedroom, ground floor apartment offering spacious accommodation comprising entrance hall, lounge, fitted kitchen, bedroom, fitted wardrobes, fitted bathroom, communal gardens and allocated parking . It is available to rent from June 2022

The property is located on a quiet, residential street but is just a five minute walk away from the bus stop and train station, and ten minutes to amenities, bars and restaurants. It also has a handy corner shop at the end of the road, and cosy local pub within a two minute walk away.

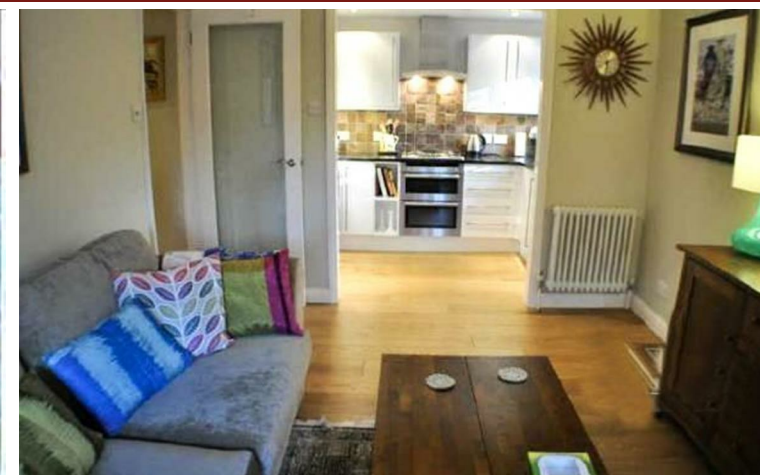
1



1



1







PUTTERILLS  
LETTINGS

EST. 1992

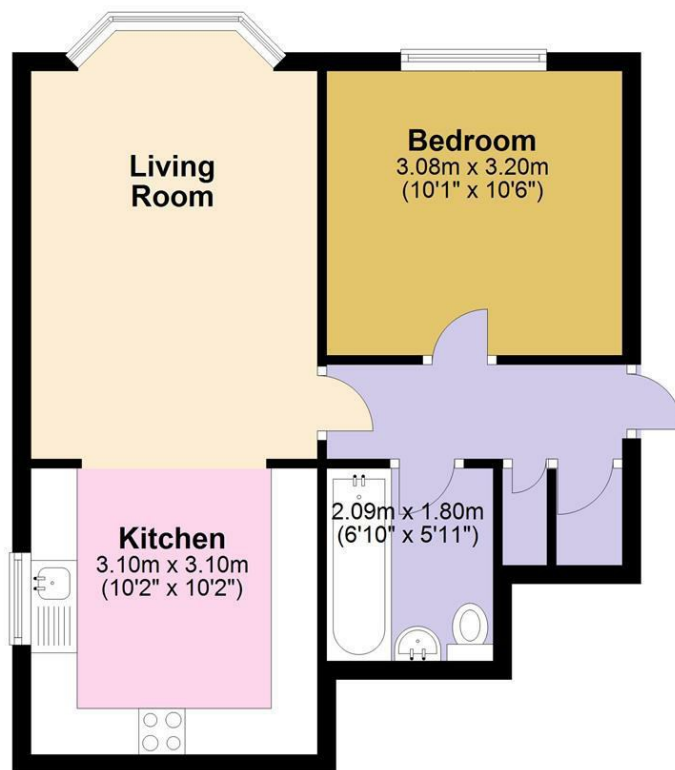








## Ground Floor



Please note that although all efforts have been made to provide accurate measurements and positioning of fixtures, this floorplan is for marketing purposes and is to be used as a guide only.

Plan produced using PlanUp.

## LOCAL AUTHORITY


## TENURE

## COUNCIL TAX BAND

C

## VIEWINGS

By prior appointment only

Energy Efficiency Rating		
	Current	Potential
<i>Very energy efficient - lower running costs</i>		
(92 plus) <b>A</b>		
(81-91) <b>B</b>		
(69-80) <b>C</b>		
(55-68) <b>D</b>		
(39-54) <b>E</b>		
(21-38) <b>F</b>		
(1-20) <b>G</b>		
<i>Not energy efficient - higher running costs</i>		
<b>England &amp; Wales</b>	EU Directive 2002/91/EC 	

Agents Note: Whilst every care has been taken to prepare these particulars, they are for guidance purposes only. All measurements are approximate and are for general guidance purposes only and whilst every care has been taken to ensure their accuracy, they should not be relied upon and potential buyers/tenants are advised to recheck the measurements



### OFFICE ADDRESS

Putterills Lettings  
123 London Road  
Knebworth  
SG3 6EX

### OFFICE DETAILS

01462 419333  
lettings@putterills.co.uk  
www.putterills.co.uk