



PUTTERILLS

est. 1992

£2,300 PCM
Milestone Road
Knebworth, SG3 6DA

PROPERTY SUMMARY

This generously proportioned red brick halls-adjointing semi detached Edwardian house boasts a central village setting & private southerly facing rear garden in excess of 100'. This property enjoys an abundance of character features typical of the Edwardian era and includes ornate fireplaces, stripped pine internal doors and picture rails. Approached via a deep entrance hall, the accommodation comprises: comfortable sitting room with bay window, a superb contemporary kitchen with bi-fold doors providing access to the garden, walk in pantry, utility room, cloakroom with sizeable shower, 3 first floor bedrooms and a family bathroom. Staircase rising to the 2nd floor and a further bedroom

4



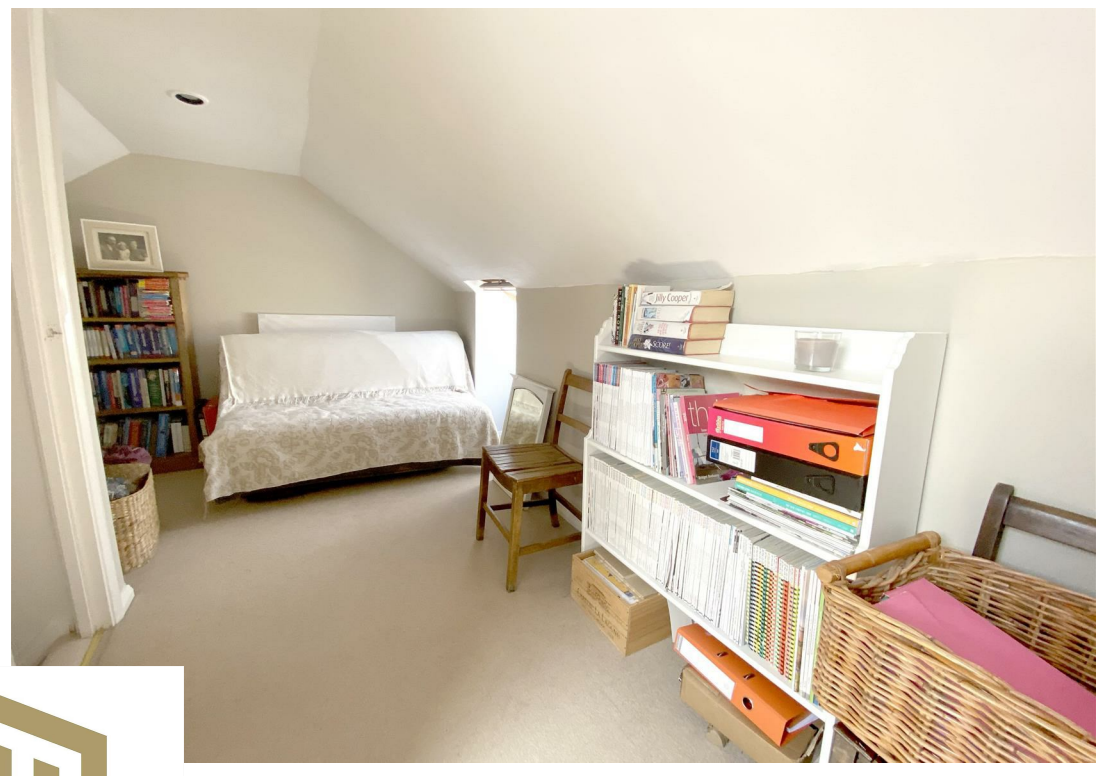
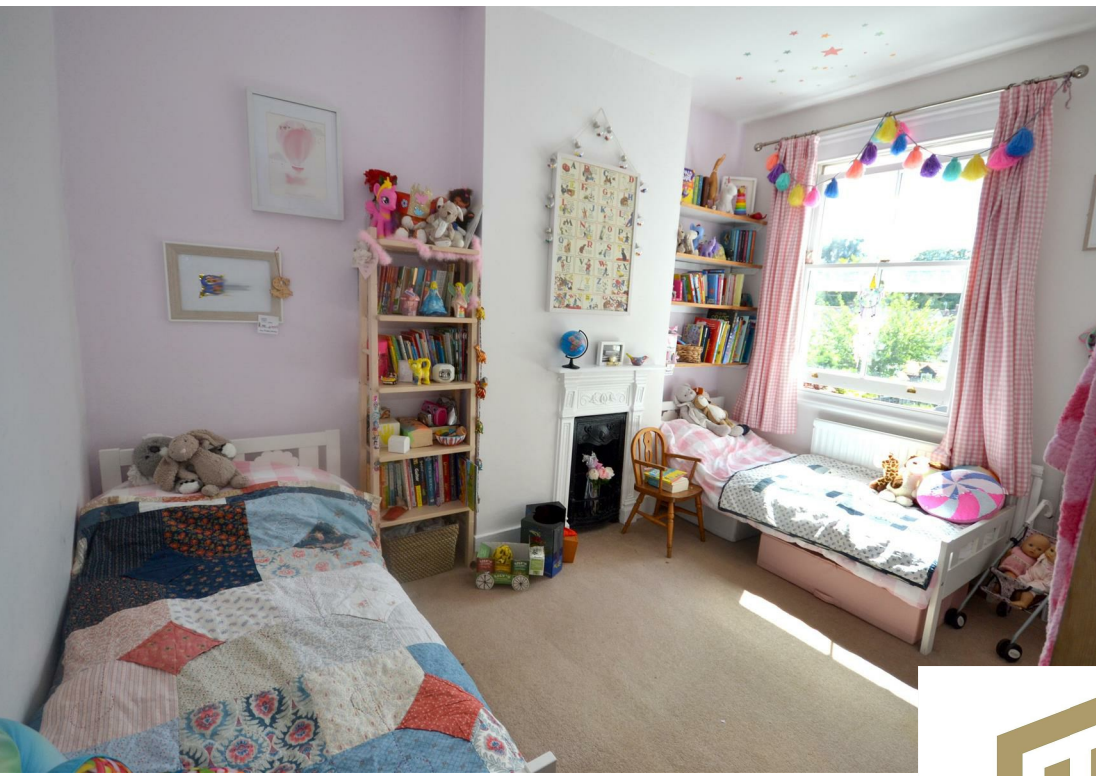
2



2









LOCAL AUTHORITY

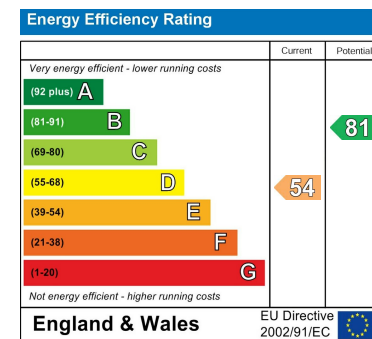
TENURE

COUNCIL TAX BAND

E

VIEWINGS

By prior appointment only



Agents Note: Whilst every care has been taken to prepare these particulars, they are for guidance purposes only. All measurements are approximate and are for general guidance purposes only and whilst every care has been taken to ensure their accuracy, they should not be relied upon and potential buyers/tenants are advised to recheck the measurements



OFFICE ADDRESS

Putterills Lettings
123 London Road
Knebworth
SG3 6EX

OFFICE DETAILS

01462 419333
lettings@putterills.co.uk
www.putterills.co.uk