



£1,250 PCM
Snowdonia Way
Stevenage, SG1 6GU

PROPERTY SUMMARY

This two-bedroom top floor apartment is situated in a sought-after location within Great Ashby, providing woodland views recently refurbished with new carpets, gas central heating and security entry systems. Allocated parking space to rear.

2



1



1



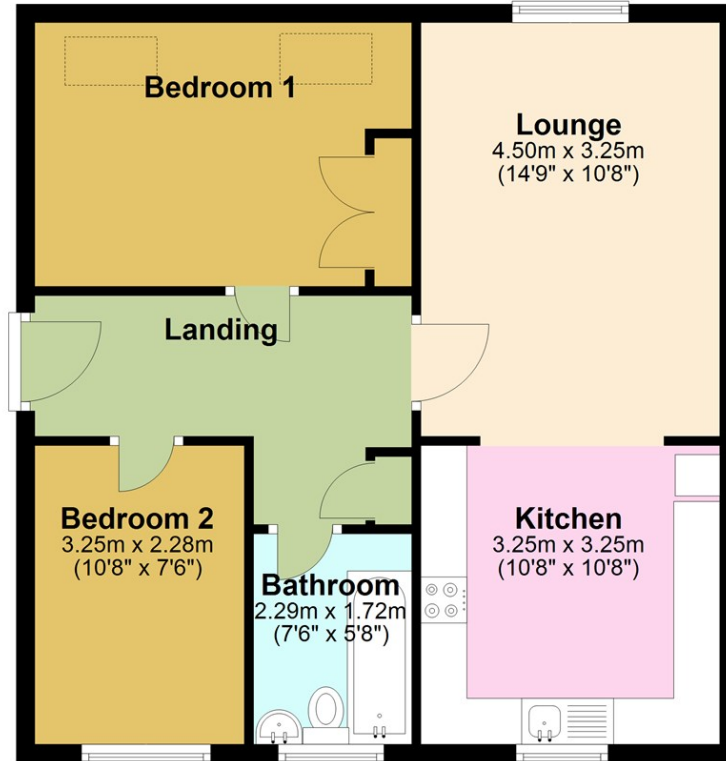


PUTTERILLS
- LETTINGS

EST. 1992







LOCAL AUTHORITY


TENURE

COUNCIL TAX BAND

C

VIEWINGS

By prior appointment only

Energy Efficiency Rating		
	Current	Potential
<i>Very energy efficient - lower running costs</i>		
(92 plus) A		
(81-91) B		
(69-80) C		
(55-68) D		
(39-54) E		
(21-38) F		
(1-20) G		
<i>Not energy efficient - higher running costs</i>		
England & Wales	EU Directive 2002/91/EC 	

Agents Note: Whilst every care has been taken to prepare these particulars, they are for guidance purposes only. All measurements are approximate and are for general guidance purposes only and whilst every care has been taken to ensure their accuracy, they should not be relied upon and potential buyers/tenants are advised to recheck the measurements



OFFICE ADDRESS

Putterills Lettings
123 London Road
Knebworth
SG3 6EX

OFFICE DETAILS

01462 419333
lettings@putterills.co.uk
www.putterills.co.uk