

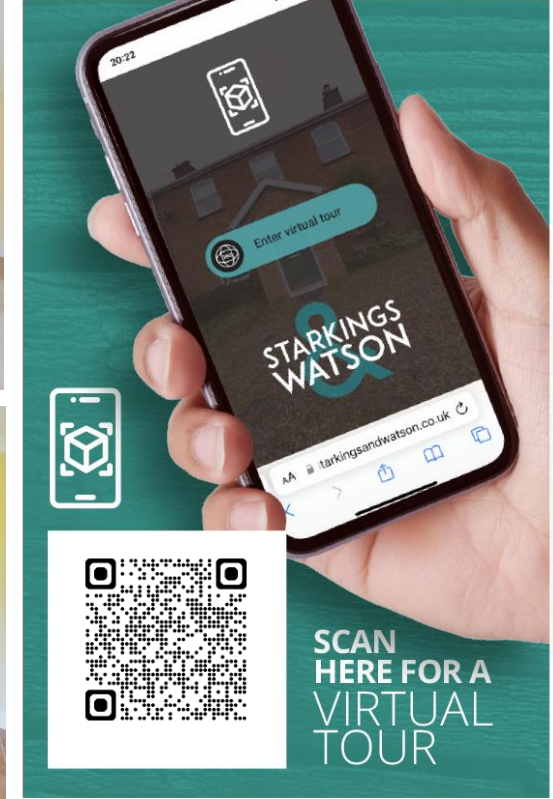
DOVECOTE CLOSE

Brooke, Norwich NR15 1JX

Freehold | Energy Efficiency Rating : D

To arrange an accompanied viewing please pop in or call us on 01508 356456

FOR SALE
PROPERTY



For our full list of available properties, or for a FREE INSTANT online valuation visit

starkingsandwatson.co.uk



STARKINGS
WATSON

- No Chain
- Detached Extended Family Home
- Three Reception Rooms
- Kitchen with Open-Plan Potential
- Three Double Bedrooms
- Church Views
- Enclosed South West Facing Gardens
- Integral Garage

IN SUMMARY

NO CHAIN. With over 1800 Sq. ft (stms) of accommodation this DETACHED HOME offers VIEWS to the CHURCH beyond. The main house has been a MUCH LOVED FAMILY HOME, with extensive accommodation centred around the welcoming entrance hall. THREE RECEPTION ROOMS offer versatile uses but in the past the 26' SITTING ROOM has been fantastic for ENTERTAINING, with the dining room opposite and a family room beyond. Doors lead to the cloakroom and fitted kitchen - with POTENTIAL to create an open plan KITCHEN by combining the adjacent floor space for the family room - subject to planning. The first floor offers THREE DOUBLE BEDROOMS, family bathroom and a modernised SHOWER ROOM. Heading outside, the SOUTH WEST facing GARDENS are MANAGEABLE and partly WALLED, ensuring the CHURCH VIEWS can be enjoyed.

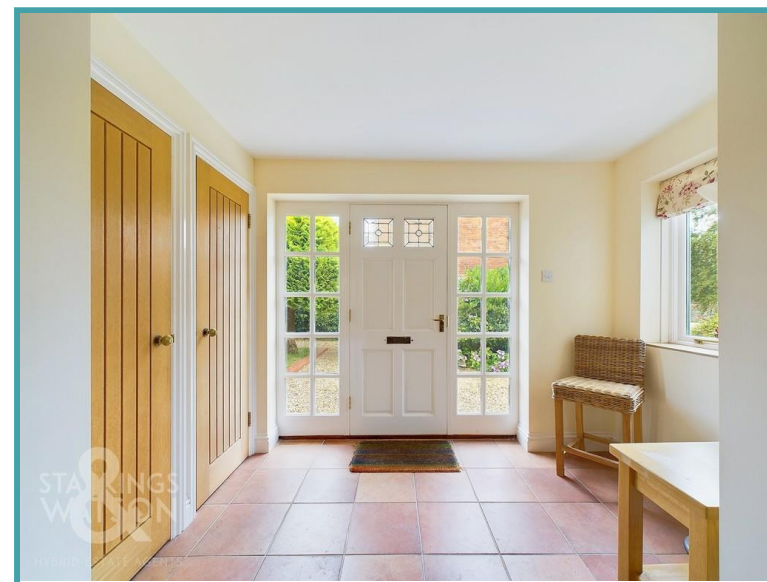
SETTING THE SCENE

Standing in Dovecote Close you are surrounded by a crescent of similar homes, with views of the original

Dovecote cresting a centrepiece, and views to the Church behind. The driveway provides off road parking and garage access, with an array of planting and lawned gardens to both the front and side.

THE GRAND TOUR

Once inside the entrance hall, a porch style space offers a tiled flooring and built-in storage, including the cupboard housing the warm air heating system. With your eyes drawn to the various doors, and the stairs which head upstairs, starting to the right, the dining room was the original sitting room and now forms part of the open plan living space which the property now enjoys. Centred around the feature fire place, double doors open to the 26' sitting room, with windows to front, side and rear, along with French doors to the garden. Once again centred around an open fire with a grand fire surround, the sitting room is great for entertaining, but still encompasses that warm snug style feel. Heading back to the dining room, an opening leads to a family room, which is adjacent to the kitchen and offering potential to remove the wall (stp) and become open plan. From the hall, doors lead to the cloakroom and kitchen. The inner hall beyond the kitchen provides garden access and a useful side access to the garage. The first floor landing is sizeable, with doors to the three bedrooms - two of them offering built-in storage. All of the bedrooms are served by a well-kept family bathroom and separate tiled shower room which includes a twin head rainfall shower.



To arrange an accompanied viewing please call our Poringland Office on **01508 356456**



THE GREAT OUTDOORS

Various doors lead into the rear garden, which faces south west and has a central lawn. A patio is screened by walls and plants, with the rear boundary planted and wrapping around the far right hand boundary. Your eye is taken to the Church which sits opposite Dovecote Close, and whilst the garden is nicely proportioned, remains easy to look after with ample space for a keen gardener or young family, and due to its private cul-de-sac setting is perfect for those who want to use the front and side spaces, or of course the village parks.

OUT & ABOUT

The property is located centrally within the pretty village of Brooke which is a highly sought after village situated approximately eight miles South of Norwich. Within walking distance excellent local facilities including a regular bus service, primary school, farm shop, post office, garage, popular walks and village hall can be found. The nearby village of Poringland is a short car or cycle journey away, offering a further extended range of amenities.

FIND US

Postcode : NR15 1JX

What3Words : ///titles.thinkers.delved

VIRTUAL TOUR

View our virtual tour for a full 360 degree of the interior of the property.

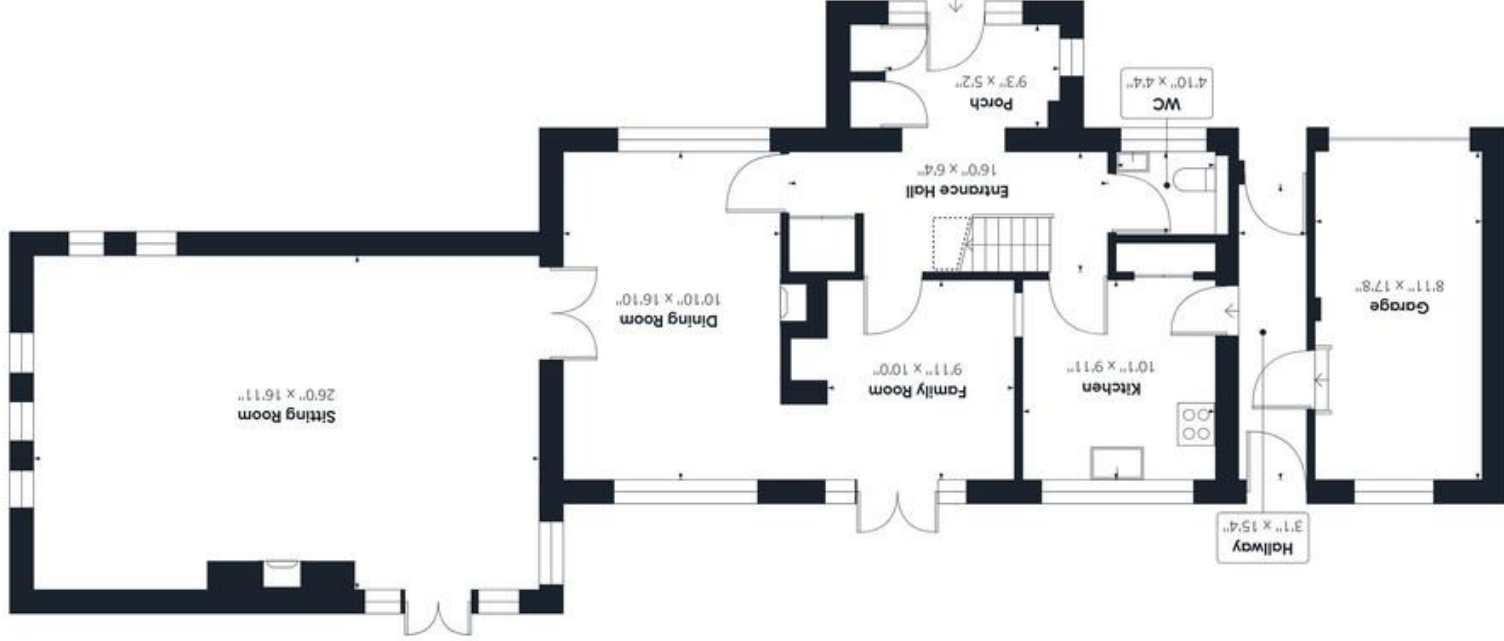
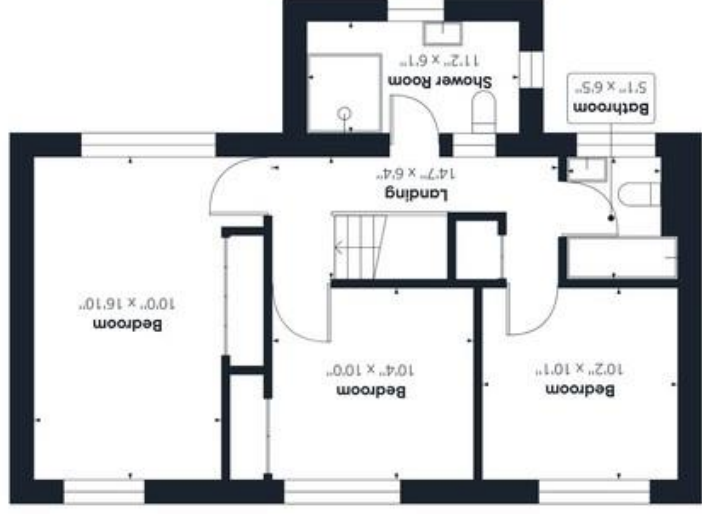
Disclaimer: Whilst every care has been taken to prepare these sales particulars, they are for guidance purposes only. All measurements are approximate are for general guidance purposes only and whilst every care has been taken to ensure their accuracy, they should not be relied upon and potential buyers are advised to recheck the measurements.

Price:



For our full list of available properties, or for a FREE INSTANT online valuation visit

starkingsandwatson.co.uk



GIRAFFE360

While every attempt has been made to ensure accuracy, all measurements are approximate, not to scale. This floor plan is for illustrative purposes only.

Reduced bedroom (below 1.5m/4.92ft)

(1) Excluding balconies and terraces

Approximate total area (1)

1866.37 ft²

Reduced bedroom

13.47 ft²