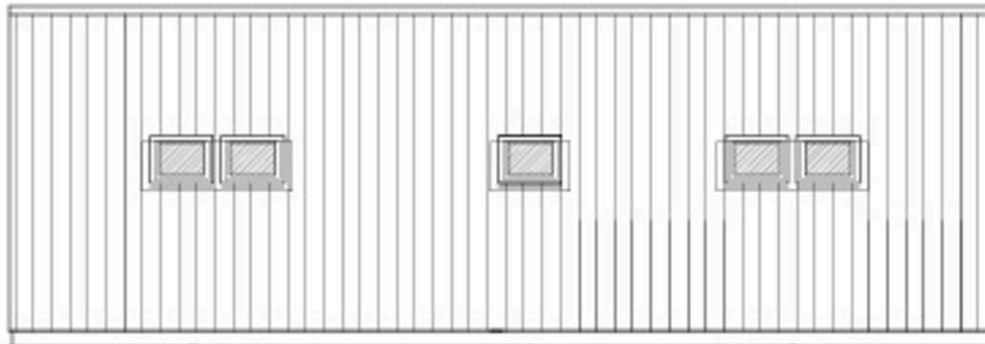




Manor Farm Close, Drayton - NR8 6EE



E A S T



Manor Farm Close

Drayton, Norwich

BUILDING LAND! Situated in the heart of **DRAYTON**, this is a **RARE OPPORTUNITY** to **PURCHASE** an **EXCLUSIVE BUILDING PLOT** of approximately 0.15 acres - 608 m2 (stms). **MANOR FARM CLOSE** is a **HIGHLY SOUGHT AFTER RESIDENTIAL LOCATION**, with a variety of **CONTEMPORARY** and **LARGE DETACHED RESIDENCES**, allowing a potential buyer to create a **SUBSTANTIAL SIX BEDROOM FAMILY HOME** over three storeys. With the road frontage in the region of 16m wide (stms), **ELECTIRC** and **DRAINAGE** are connected to the site, with water in the path. Full **PLANNING PERMISSION** has been granted for a six bedroom home which could easily be amended to a four bedroom home with the omission of the attic bedrooms and bathroom. A **GREAT OPPORTUNITY** for those seeking a **SELF BUILD PLOT**, planning permission has been granted under approval number 20212330, with **NUTRIENT NUTRALITY CREDITS** already purchased.

Tenure: Freehold

- Freehold Building Plot
- Approx. 0.15 Acres (stms)
- Full Planning Permission Granted
- Sought After Residential Location
- 16m Road Frontage (stms)
- Detailed Planning for Six Bedroom House & Garage
- Walking Distance to Amenities
- Easy Access to Broadland Northway

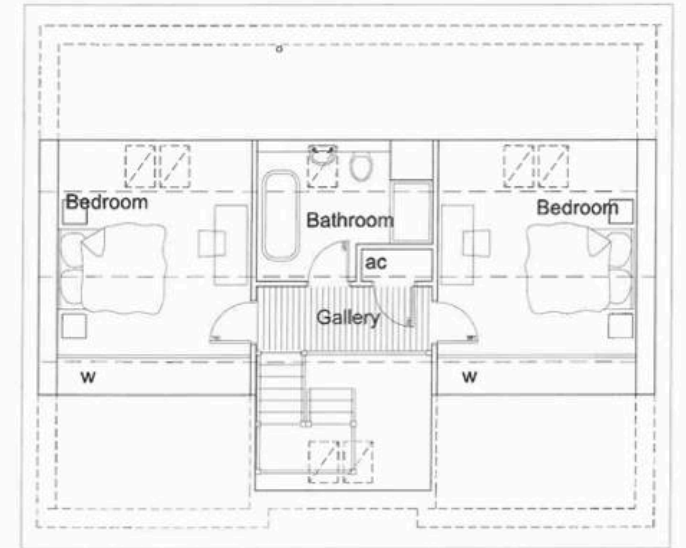
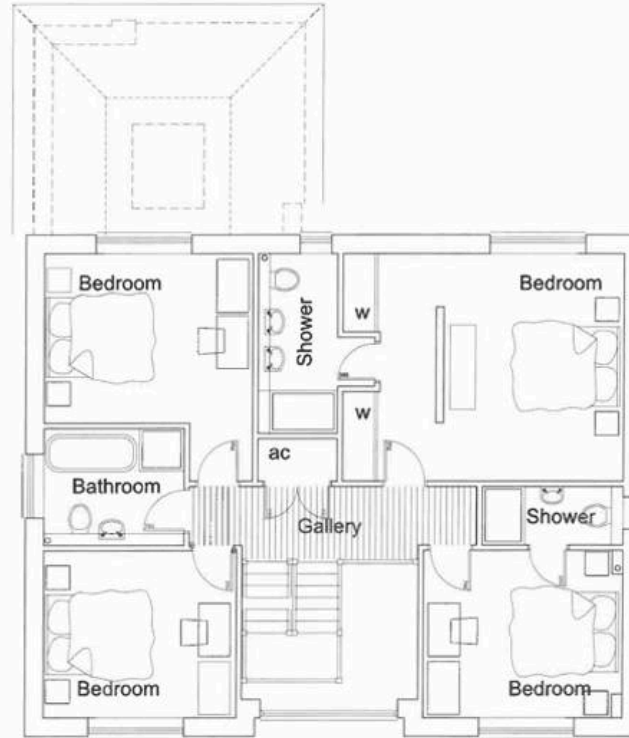
Drayton is a popular village situated to the north west of Norwich and conveniently located for access to Norwich International Airport. There is a wide range of amenities in the area including local shops, a post office, café and bakery, two public houses, doctors & dental surgeries and First and Middle Schools.

FIND US

Postcode : NR8 6EE

What3Words : ///dearest.realm.slot





Starkings & Watson Hybrid Estate Agents

196 Norwich Road, Costessey - NR5 0EX

01603 336446 • costessey@starkingsandwatson.co.uk • starkingsandwatson.co.uk/

Disclaimer: Whilst every care has been taken to prepare these sales particulars, they are for guidance purposes only. All measurements are approximate and for general guidance purposes only and whilst every care has been taken to ensure their accuracy, they should not be relied upon and potential buyers are advised to recheck the measurements.