

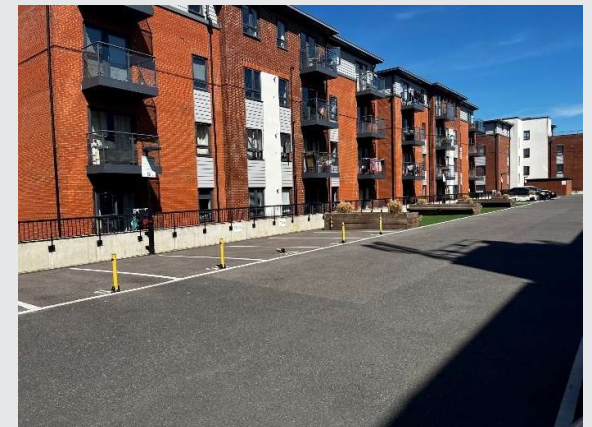
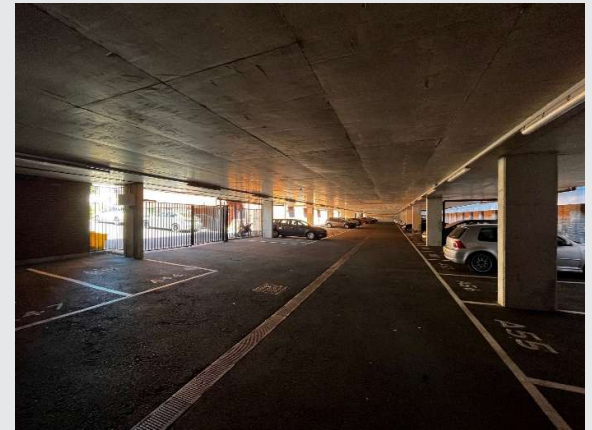
PERRY HOLT

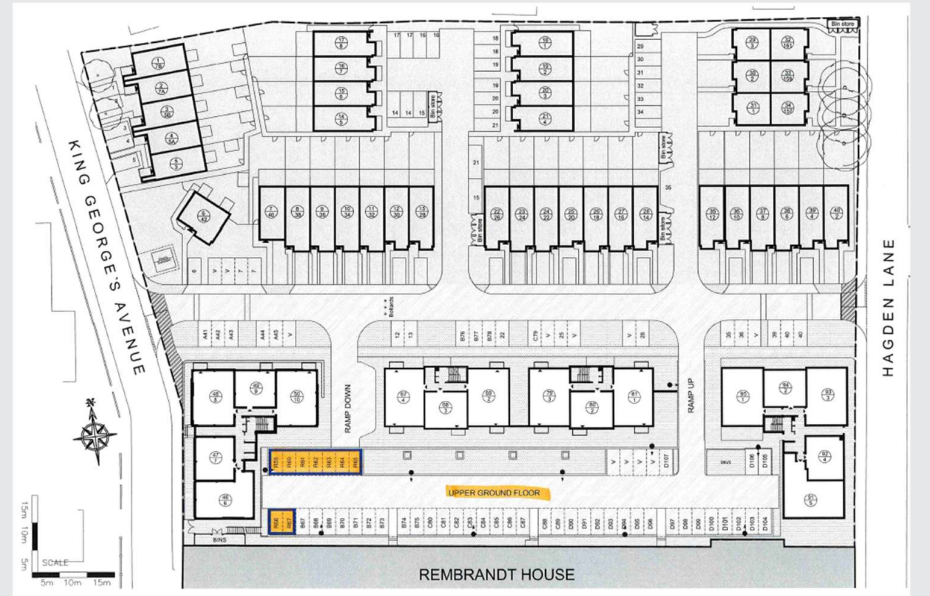
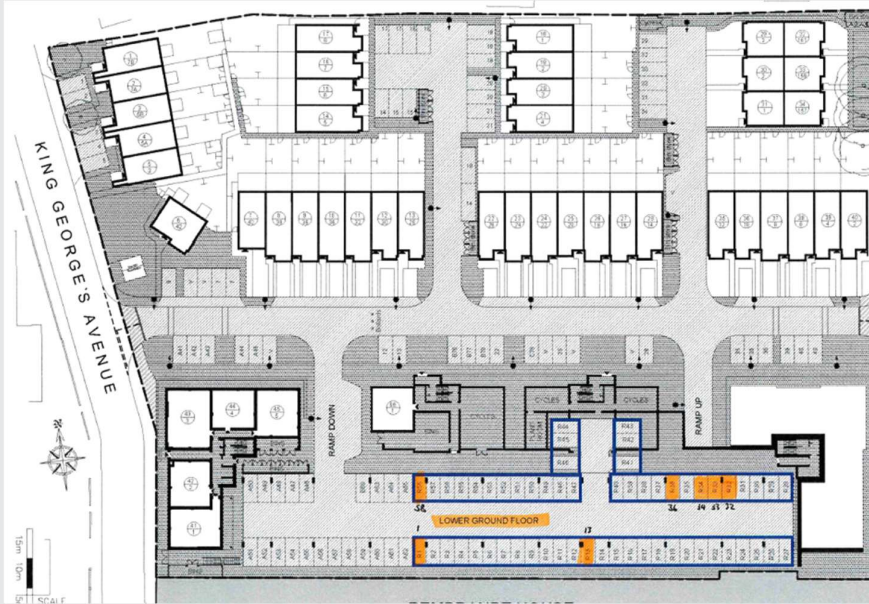
PROPERTY CONSULTANTS

FOR SALE

16 car parking spaces

Car Parking Spaces, Rembrandt House, 400
Whippendell Road, Watford, Hertfordshire





LOCATION

Watford is a popular town located in South West Hertfordshire. 14 miles north west of Central London. The immediate area to the car parking spaces is a mix of residential houses and apartments. The town centre is just over a mile away and offers a vast array of amenities, including Harlequin Watford, offering an array of major retailers.

Watford Football Club Stadium is located 0.8 miles away.

This location provides strong road links as it is 3 miles from Junction 19 of the M25 and 3.2 miles from Junction 5 of the M1.

Watford Metropolitan Underground Station providing services to Aldgate and Baker Street stations is 0.5 miles away, whilst Watford Junction with services to London Euston is 1.3 miles away.

DESCRIPTION

We are pleased to bring to the market, rarely available, bulk car parking spaces at a gated development.

There is a shortage of parking in the area with upcoming developments, therefore this could be a good investment to target developments in the walking vicinity of the spaces that lack parking for residents.

Within walking distance are Watford Business Park and Croxley Business Park which combined have a total of circa 3,600 employees. Along with Finway Court which is a small industrial estate circa 500 yards from the spaces. Watford General Hospital is 0.7 miles away where hundreds of doctors and nurses travel to everyday.

PRICE

£130,000 for the long leasehold interest (990 years at a peppercorn rent).

VAT

Applicable

LEGAL COSTS

Each party to be responsible for their own legal costs.

PERRY HOLT

PROPERTY CONSULTANTS

FIRST FLOOR OFFICES 165-167 HIGH STREET
RICKMANSWORTH HERTS WD3 1AY

perryholt.co.uk

ALEX SEWELL

DIRECTOR

07815 875444

01923 239080

alex@perryholt.co.uk

BEN HOWARD

ASSOCIATE DIRECTOR

07527 709064

01923 239080

ben@perryholt.co.uk