



Stewart Place, Station Road, Ware SG12 9UN

£1,350 per calendar month



2



2

Taylor Phelps

Estate Agency

Taylor Phelps
Estate Agency

Taylor Phelps are pleased to offer this larger style two bedroom two bathroom apartment positioned within this modern development close to Ware high street and station which serves both Hertford East and London Liverpool Street!





Taylor Phelps



Taylor Phelps

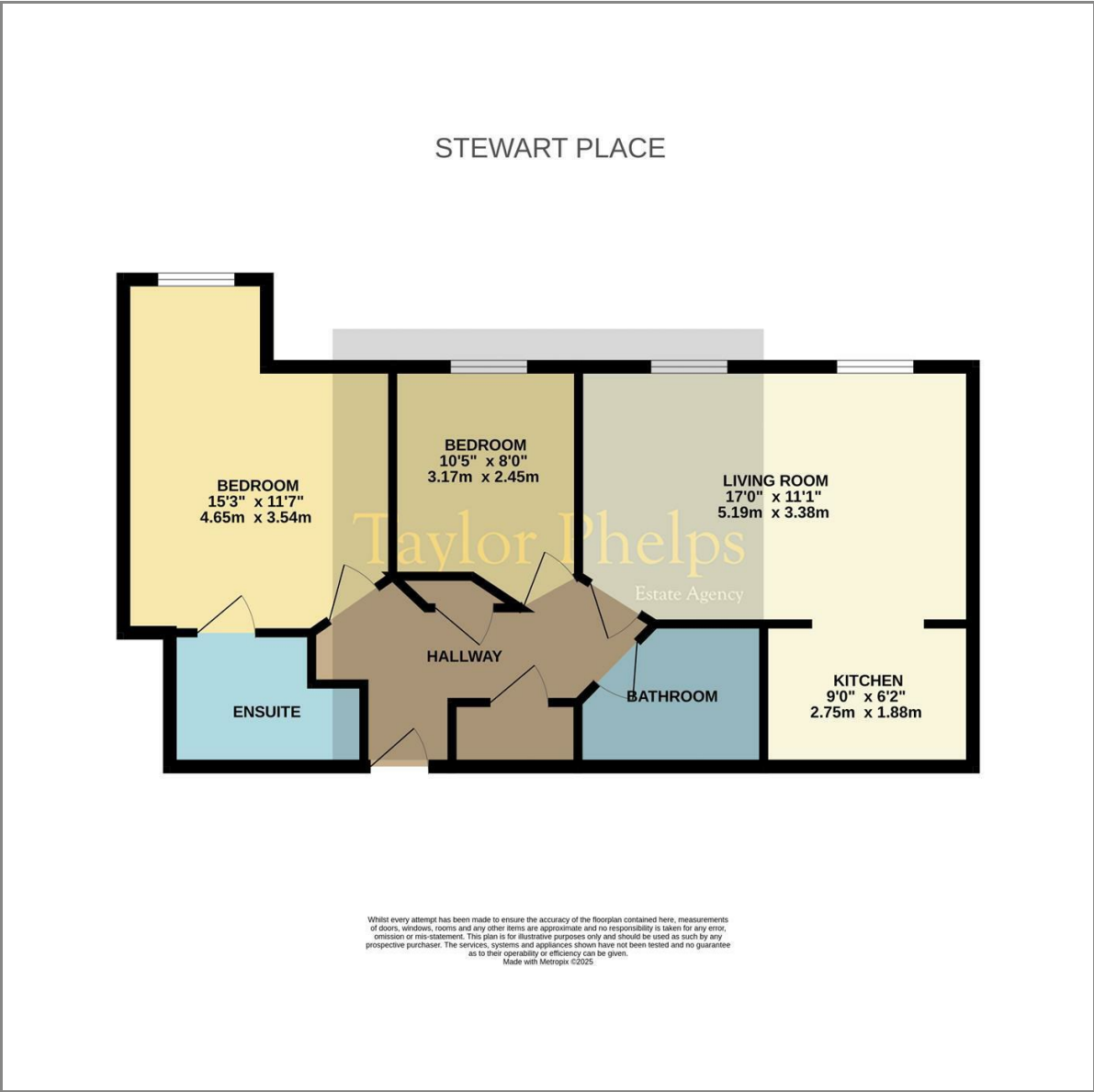


Taylor Phelps
Estate Agency

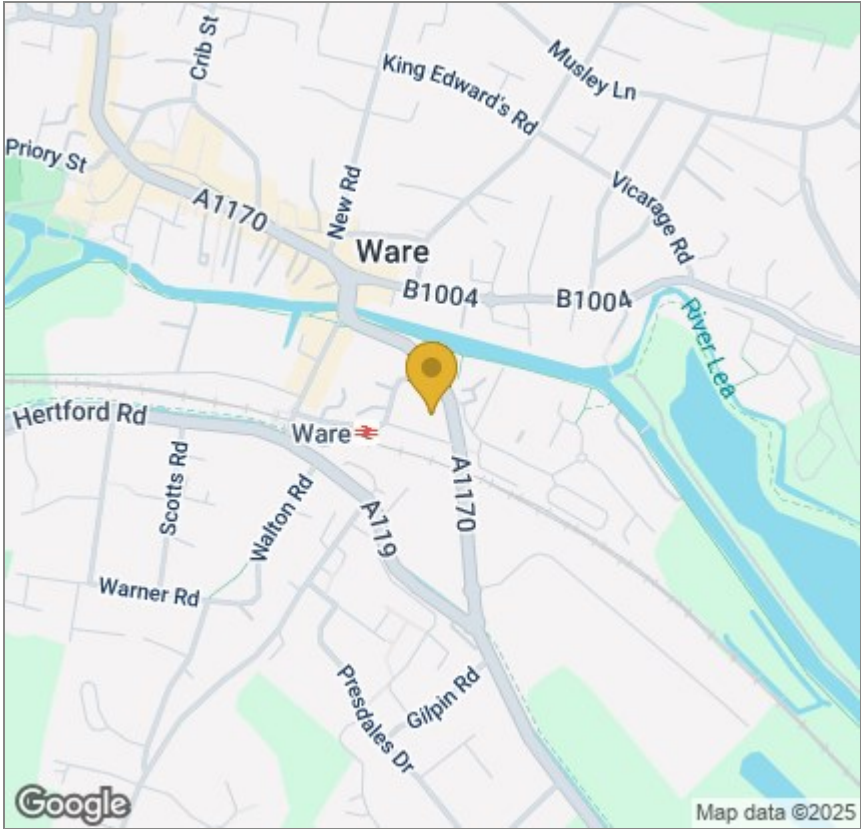


Taylor Phelps

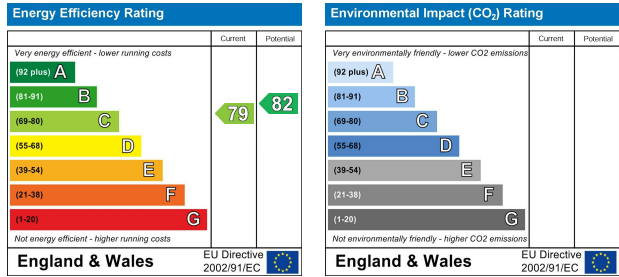
Floor Plan



Area Map



Energy Efficiency Graph



These particulars, whilst believed to be accurate are set out as a general outline only for guidance and do not constitute any part of an offer or contract. Intending purchasers should not rely on them as statements of representation of fact, but must satisfy themselves by inspection or otherwise as to their accuracy. No person in this firms employment has the authority to make or give any representation or warranty in respect of the property.