



Rushfield Road, Ware SG12 7JH

Guide price £700,000



4



2

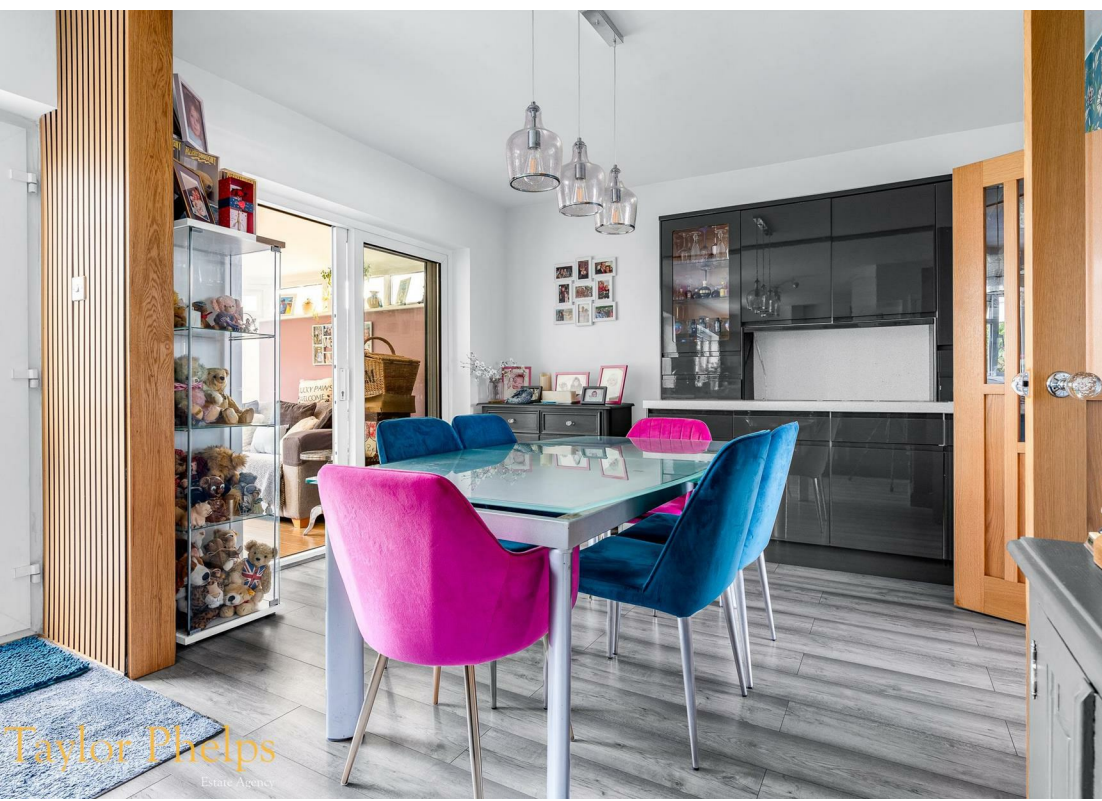
Taylor Phelps

Estate Agency

Taylor Phelps are pleased to offer this extended four bedroom semi positioned on this desirable residential road in Ware. This house offers spacious and versatile accommodation and with a fantastic rear garden with sunny aspect, artificial lawn and superb garden room. Internally there is a well appointed family kitchen with separate utility room, a conservatory and a useful downstairs w/c. The first floor is home to the four bedrooms and two bathrooms. Externally to the front this house boasts a resin driveway providing off street parking for several vehicles. Location wise this property is with close proximity of Priors Wood School and the Larkspur Academy and Ware itself offers a number of high street conveniences and Ware train station which serves both Hertford East and London Liverpool Street.













Taylor Phelps
Estate Agency



Taylor Phelps
Estate Agency

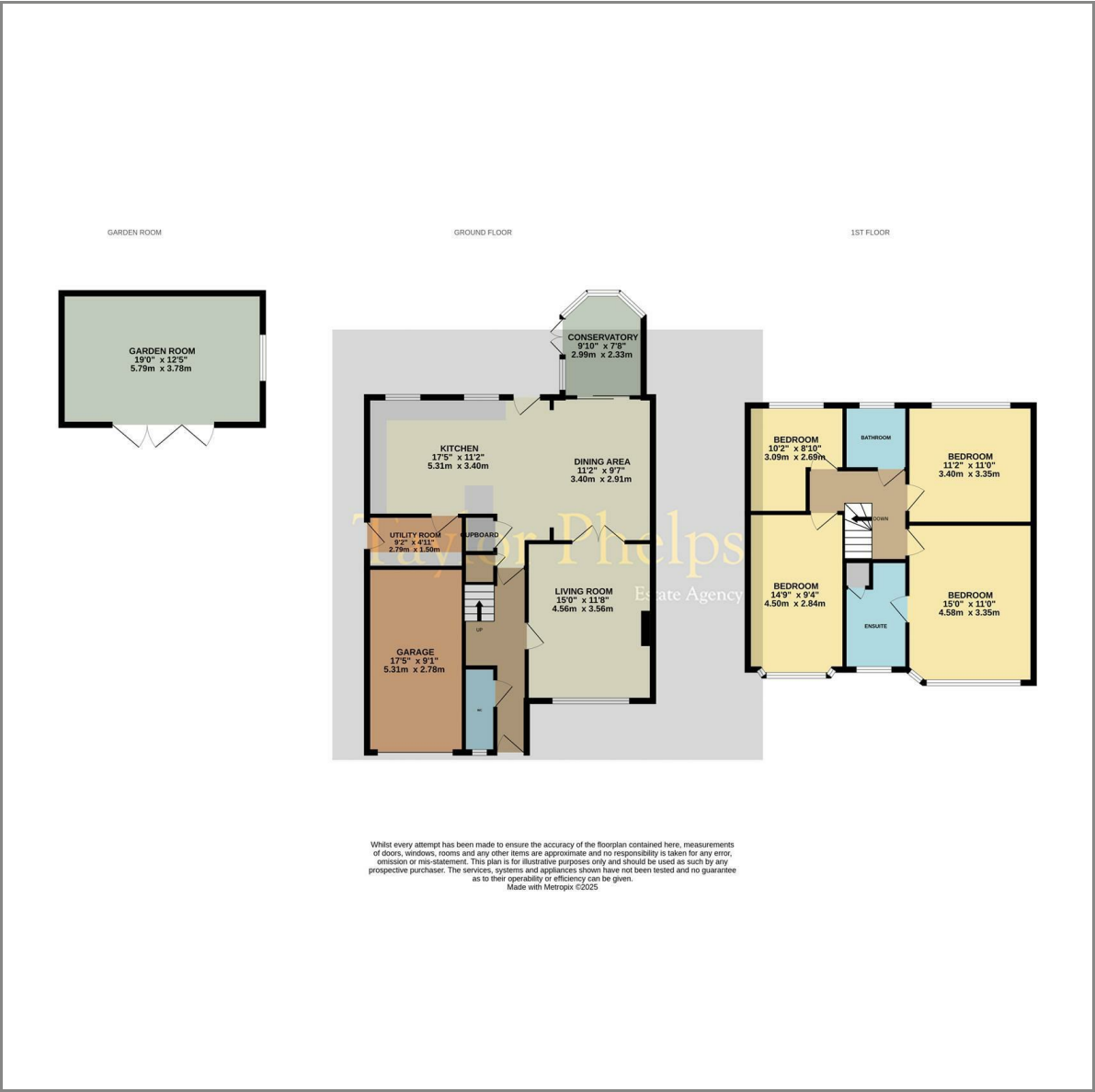


Taylor Phelps
Estate Agency

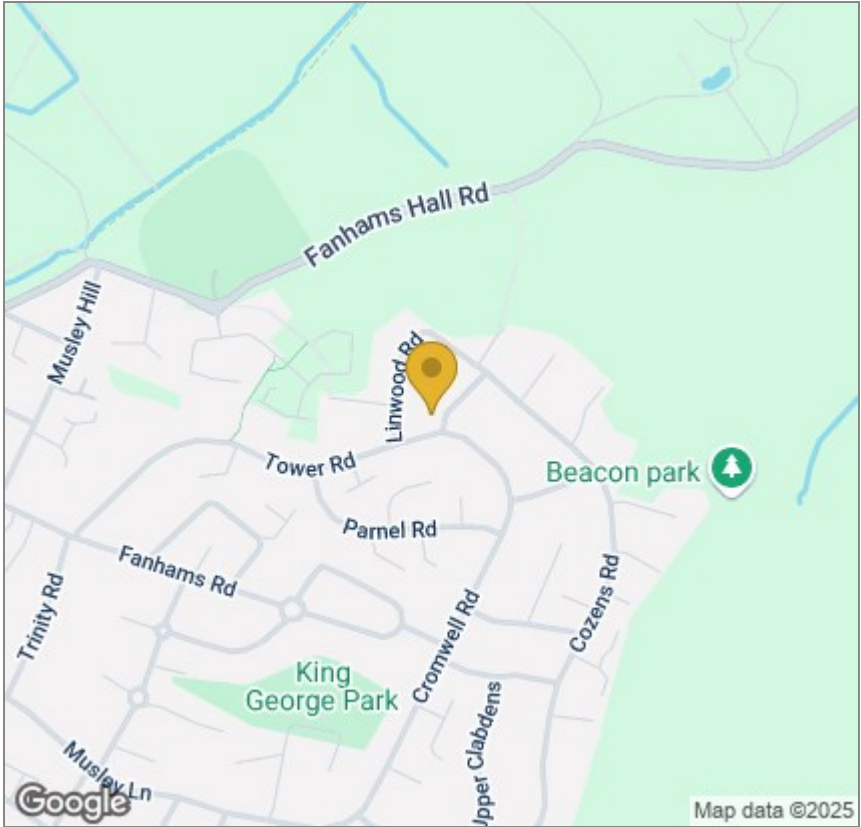


Taylor Phelps
Estate Agency

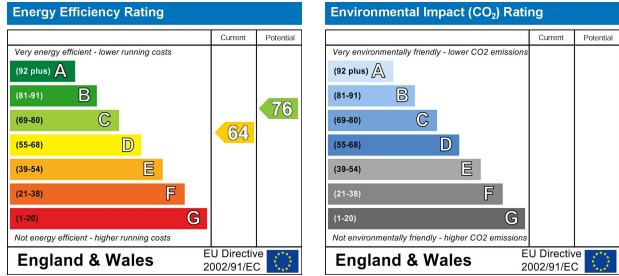
Floor Plan



Area Map



Energy Efficiency Graph



These particulars, whilst believed to be accurate are set out as a general outline only for guidance and do not constitute any part of an offer or contract. Intending purchasers should not rely on them as statements of representation of fact, but must satisfy themselves by inspection or otherwise as to their accuracy. No person in this firms employment has the authority to make or give any representation or warranty in respect of the property.