



The Red House, High street, Buntingford SG9 9AJ

£1,600



2



2

Taylor Phelps

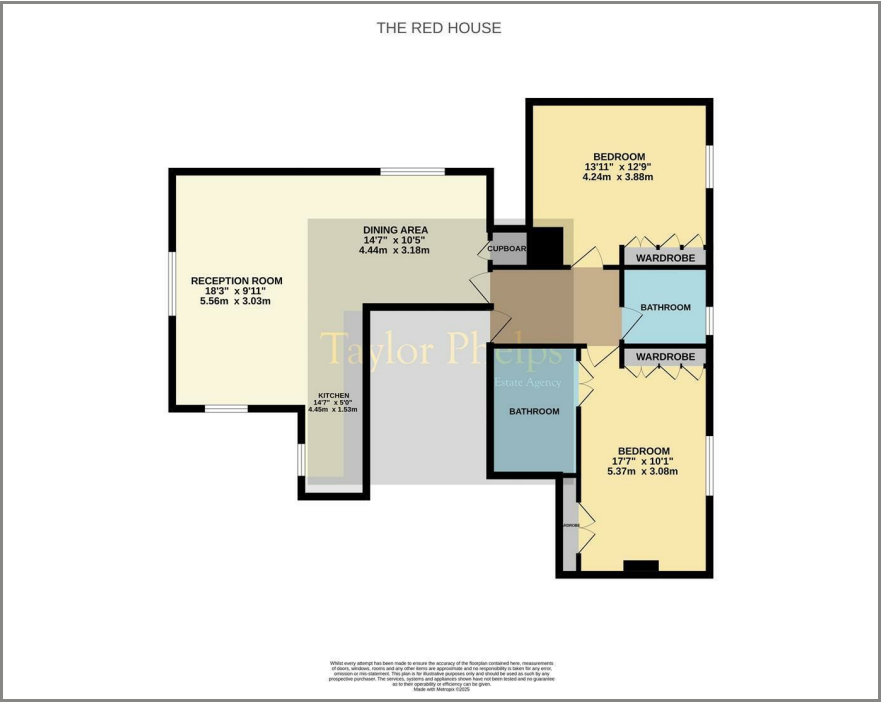
Estate Agency

Taylor Phelps

Estate Agency



Floor Plan



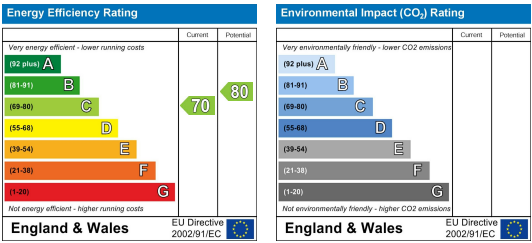
Area Map



Taylor Phelps are pleased to offer this exceptional penthouse apartment boasting a wealth of character features positioned within the heart of this highly desirable market town. This stunning property benefits from two double bedrooms and two luxury bathrooms, a modern kitchen with granite worksurfaces and a spacious open plan living / dining room. This grade II listed abode must be viewed to be fully appreciated. Externally there are two allocated parking spaces and the high street amenities are on the doorstep.



Energy Efficiency Graph



These particulars, whilst believed to be accurate are set out as a general outline only for guidance and do not constitute any part of an offer or contract. Intending purchasers should not rely on them as statements of representation of fact, but must satisfy themselves by inspection or otherwise as to their accuracy. No person in this firm's employment has the authority to make or give any representation or warranty in respect of the property.