



Lady Margaret Gardens, Ware SG12 7QB  
Guide price £595,000

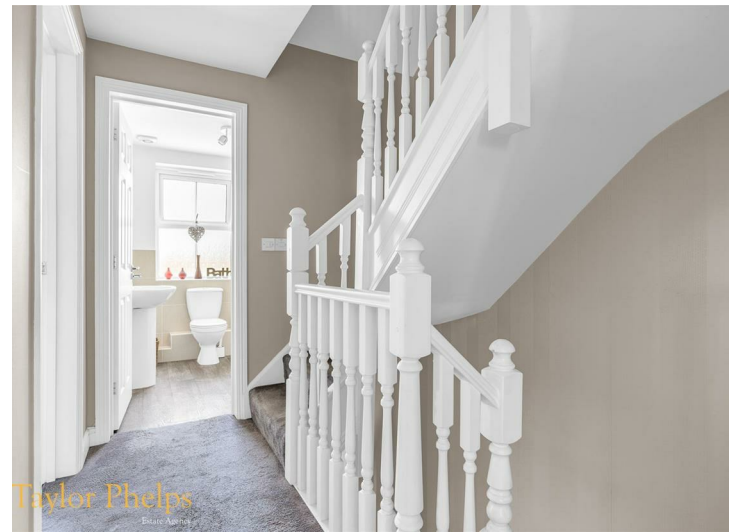


Taylor Phelps

Estate Agency



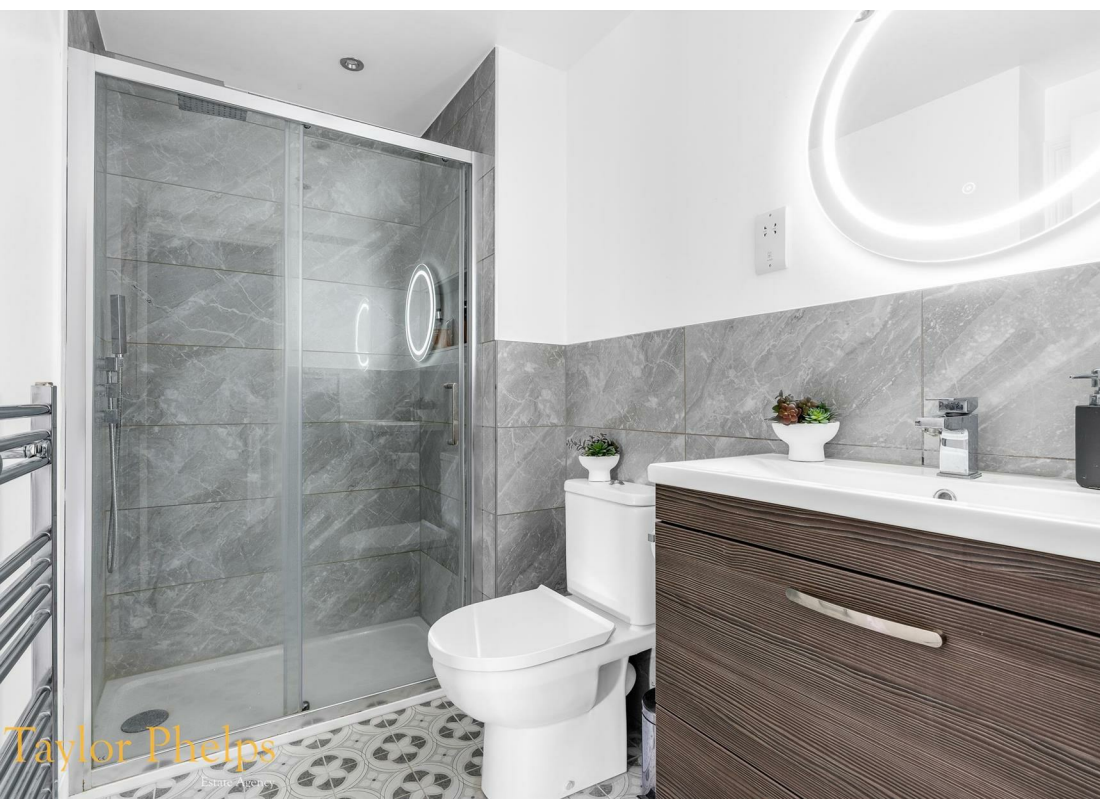
*Taylor Phelps are pleased to offer this ultra spacious, larger style, end terrace - family home positioned within this modern residential development in Ware! This fantastic house boasts versatile accommodation throughout with four bedrooms, two bathrooms, including a brand new ensuite, and a downstairs wc / utility. Externally there is a well kept garden and private garage and parking.*

















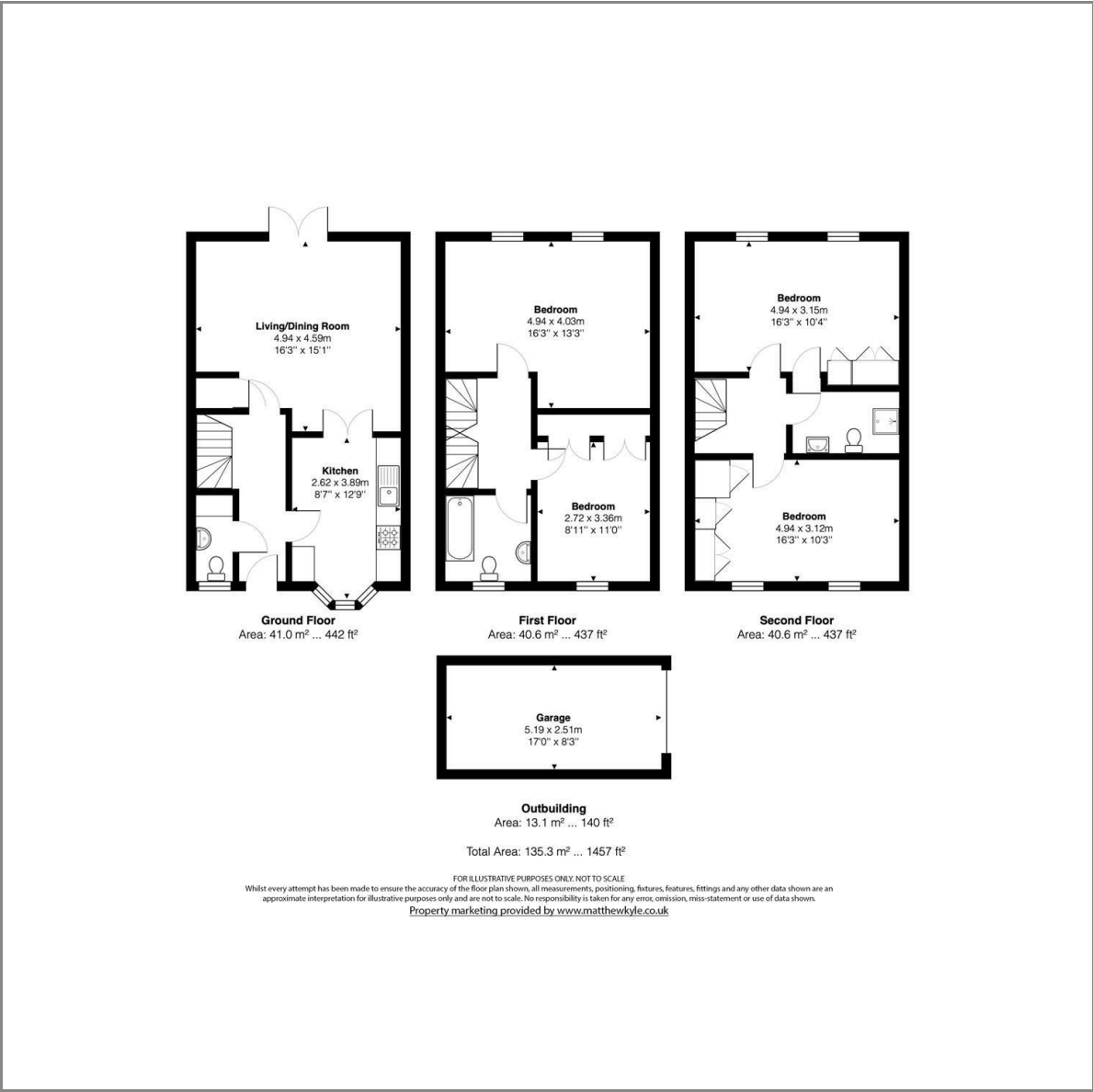






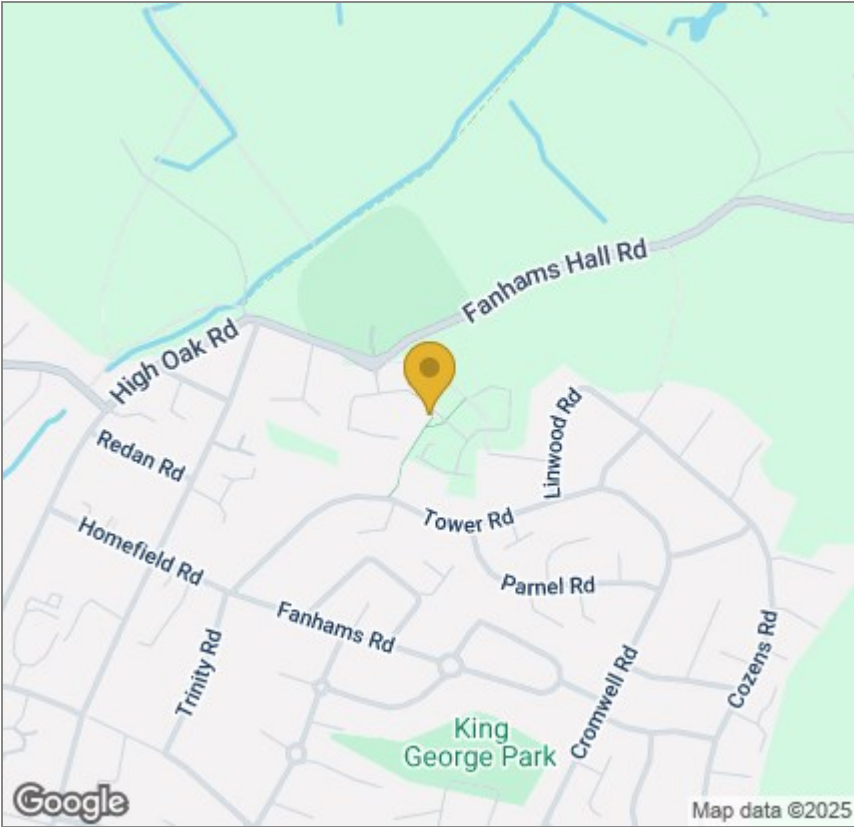


Floor Plan



These particulars, whilst believed to be accurate are set out as a general outline only for guidance and do not constitute any part of an offer or contract. Intending purchasers should not rely on them as statements of representation of fact, but must satisfy themselves by inspection or otherwise as to their accuracy. No person in this firms employment has the authority to make or give any representation or warranty in respect of the property.

Area Map



Energy Efficiency Graph

