



Musley Hill, Ware SG12 7NA

Guide price £425,000



2



1

Taylor Phelps

Estate Agency

Estate Agency



Taylor Phelps are pleased to offer this stylish two bedroom Victorian home positioned close to the high street and station in Ware which serves both Hertford East and London Liverpool Street! This end terrace house boasts a wealth of period features throughout and further benefits from a high spec refitted kitchen, modern upstairs bathroom with separate w/c, two receptions and a cottage style rear garden with sunny westerly aspect.



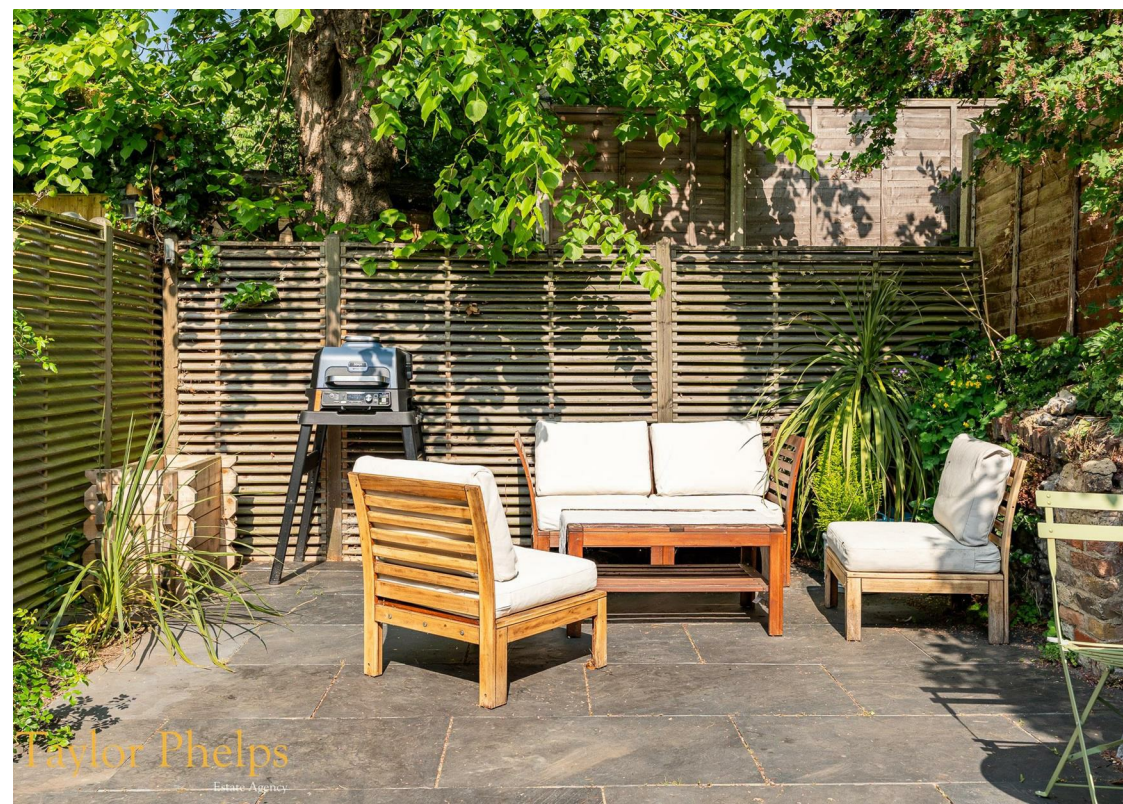




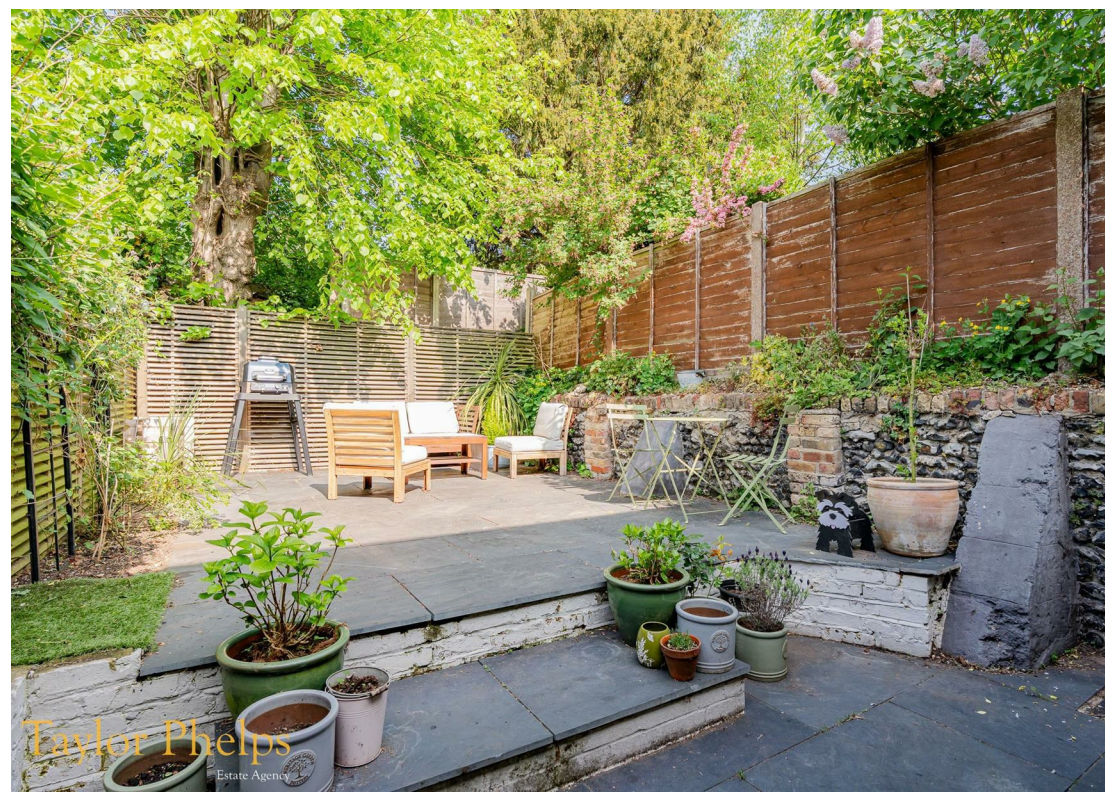






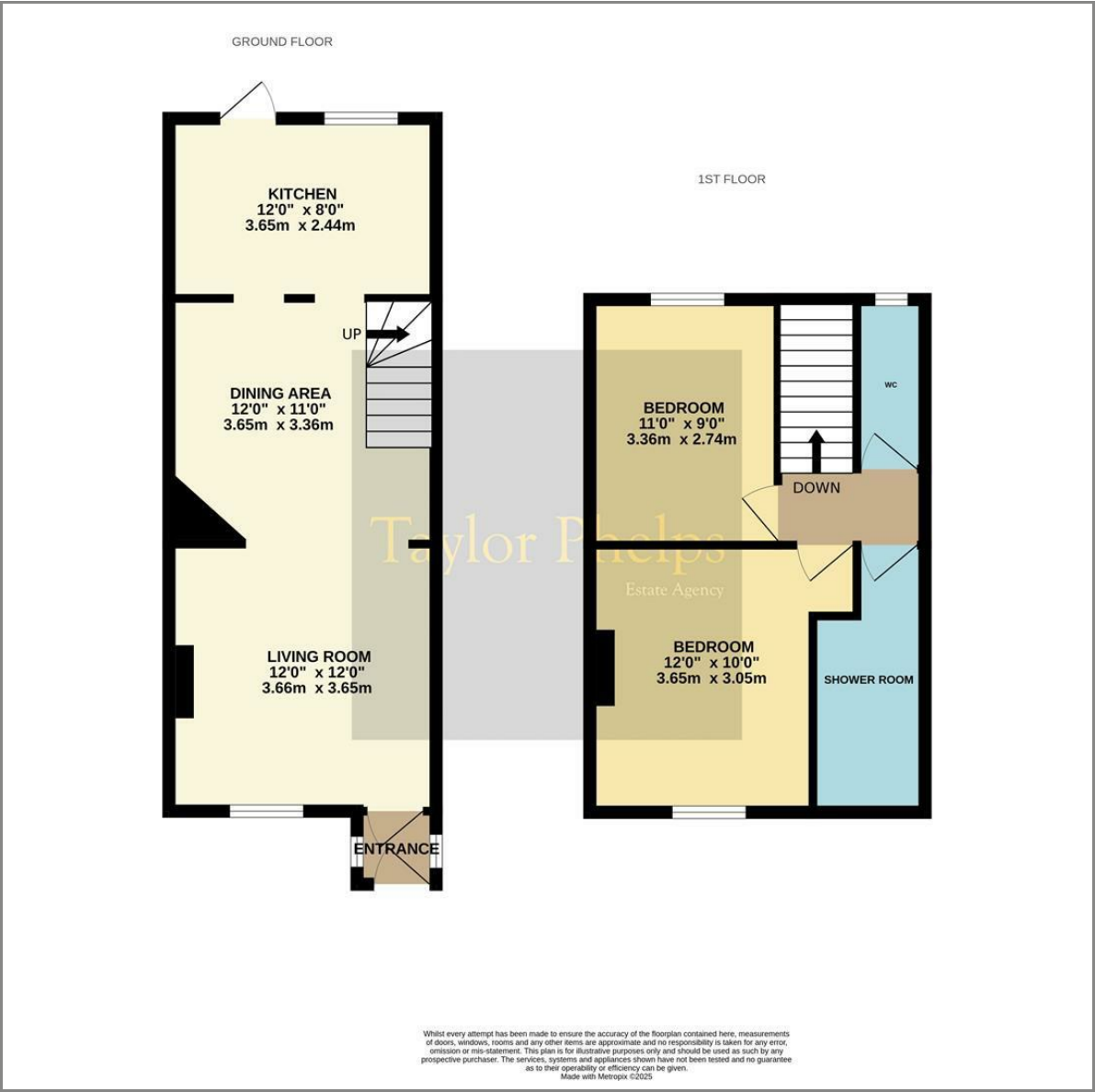




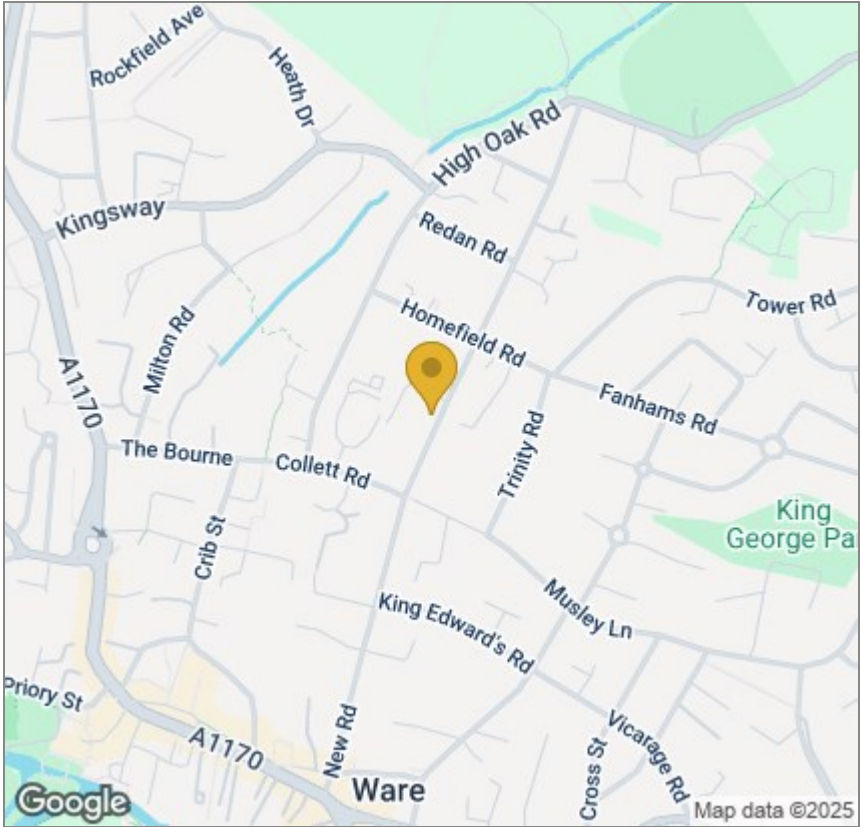




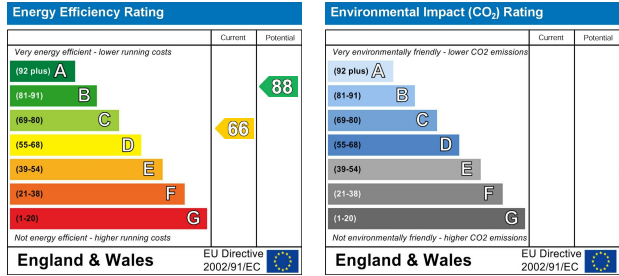
Floor Plan



Area Map



Energy Efficiency Graph



These particulars, whilst believed to be accurate are set out as a general outline only for guidance and do not constitute any part of an offer or contract. Intending purchasers should not rely on them as statements of representation of fact, but must satisfy themselves by inspection or otherwise as to their accuracy. No person in this firms employment has the authority to make or give any representation or warranty in respect of the property.