



Church House, Church Street, Ware SG12 9EN

Guide price £315,000



2



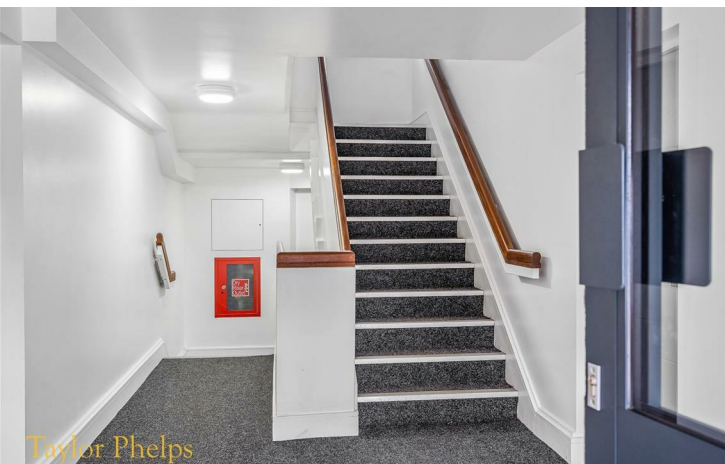
2

Taylor Phelps

Estate Agency

Estate Agency

Taylor Phelps are pleased to offer this fantastic two bedroom apartment forming part of this exclusive private development in Ware town centre, close to the high street and station which serves both Hertford East and London Liverpool Street! This modern apartment is located on the ground floor and benefits from a high spec, fully integrated - open plan kitchen with granite worksurface, two luxurious bathrooms, a long lease and private residents parking! Available Chain Free





Taylor Phelps
Estate Agency



Taylor Phelps
Estate Agency



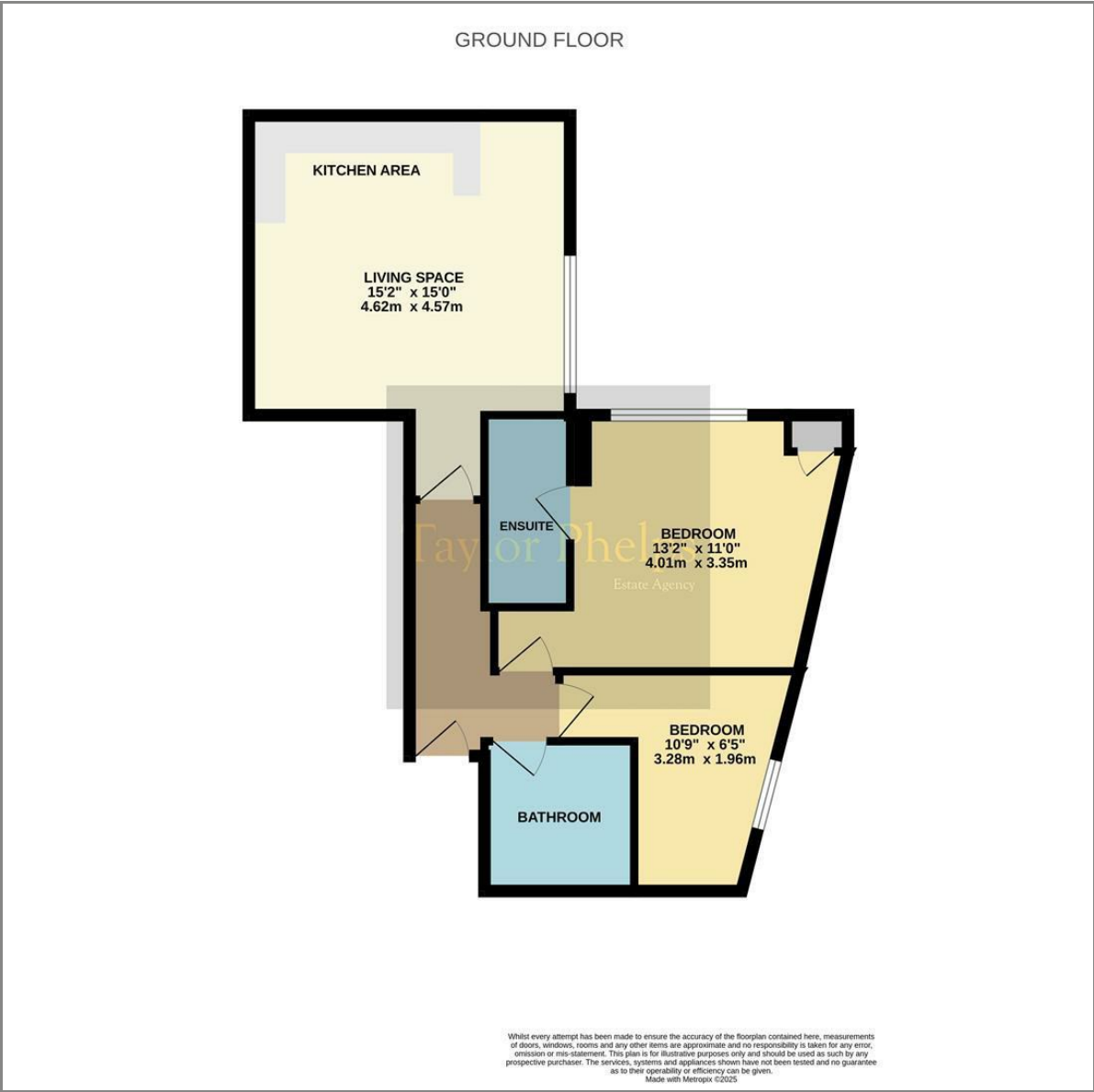
Taylor Phelps
Estate Agency



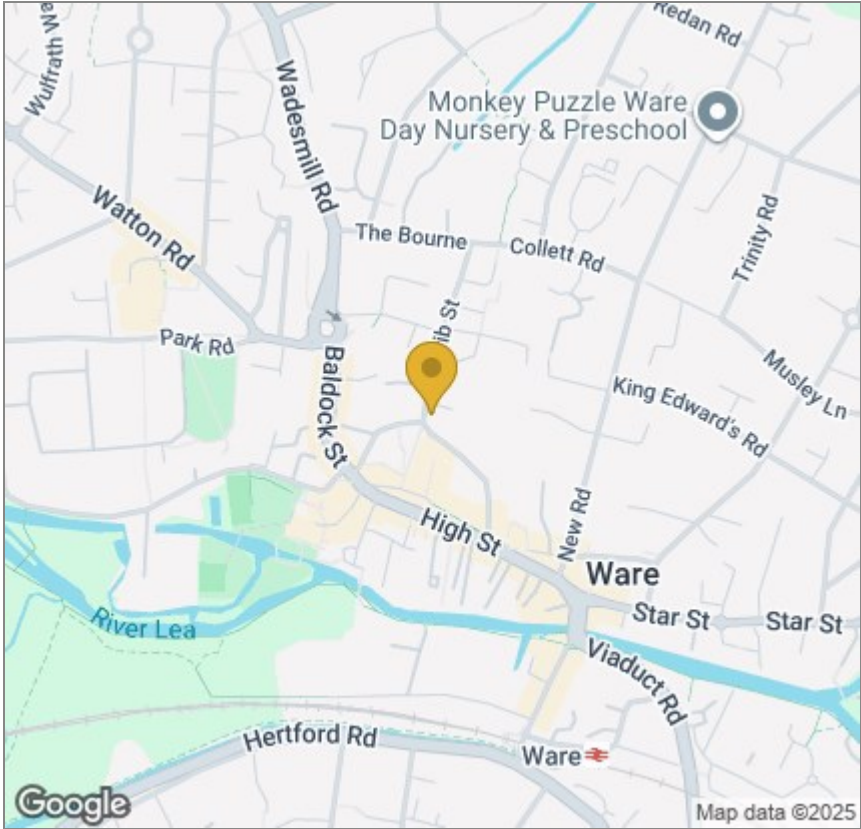
Taylor Phelps
Estate Agency



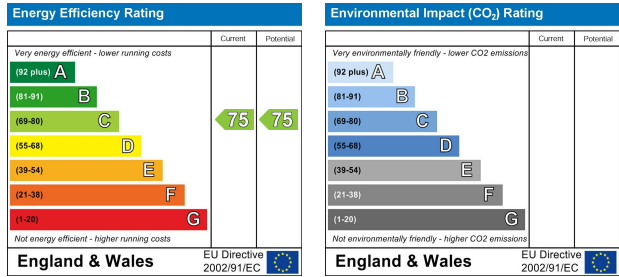
Floor Plan



Area Map



Energy Efficiency Graph



These particulars, whilst believed to be accurate are set out as a general outline only for guidance and do not constitute any part of an offer or contract. Intending purchasers should not rely on them as statements of representation of fact, but must satisfy themselves by inspection or otherwise as to their accuracy. No person in this firms employment has the authority to make or give any representation or warranty in respect of the property.