



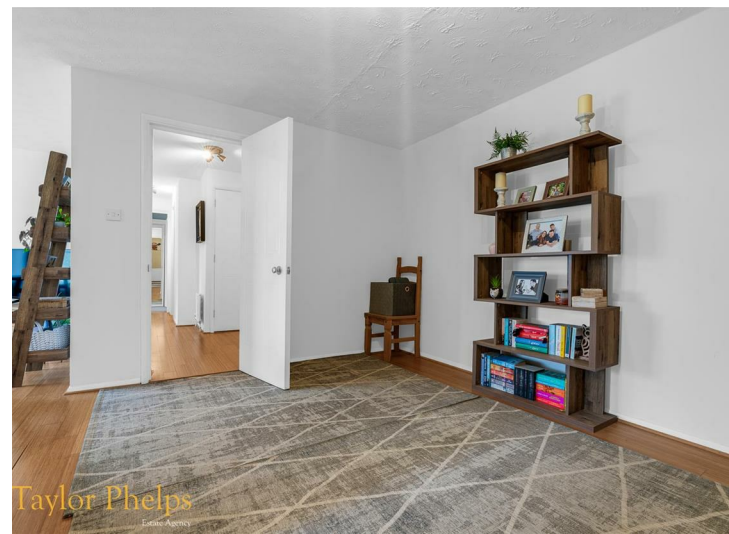
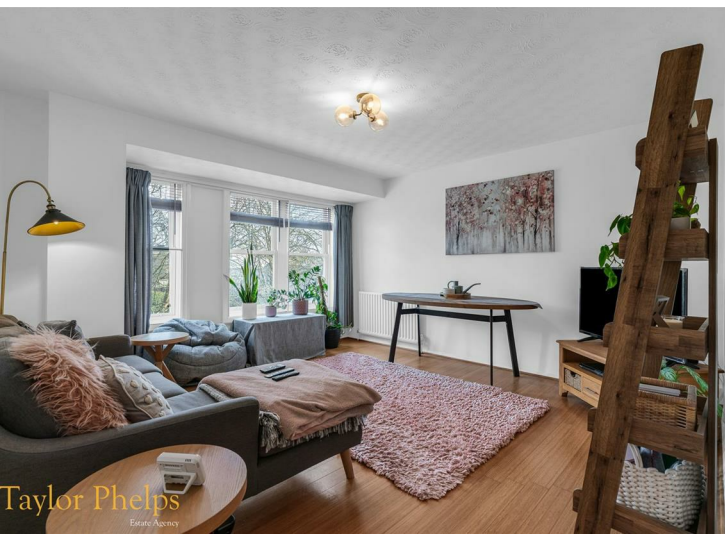
Millacres, Station Road, Ware SG12 9PU
Guide price £310,000



Taylor Phelps

Estate Agency

Taylor Phelps are pleased to offer this larger style two bedroom apartment positioned within the heart of Ware town centre! This spacious apartment is positioned on the second floor and further benefits from an extended lease, high spec refitted kitchen, two bathrooms, two reception area's and a view of the river. Externally there is allocated resident's parking accessed via security gate and Millacres itself is located moments from the high street and train station which serves both Hertford East and London Liverpool Street!





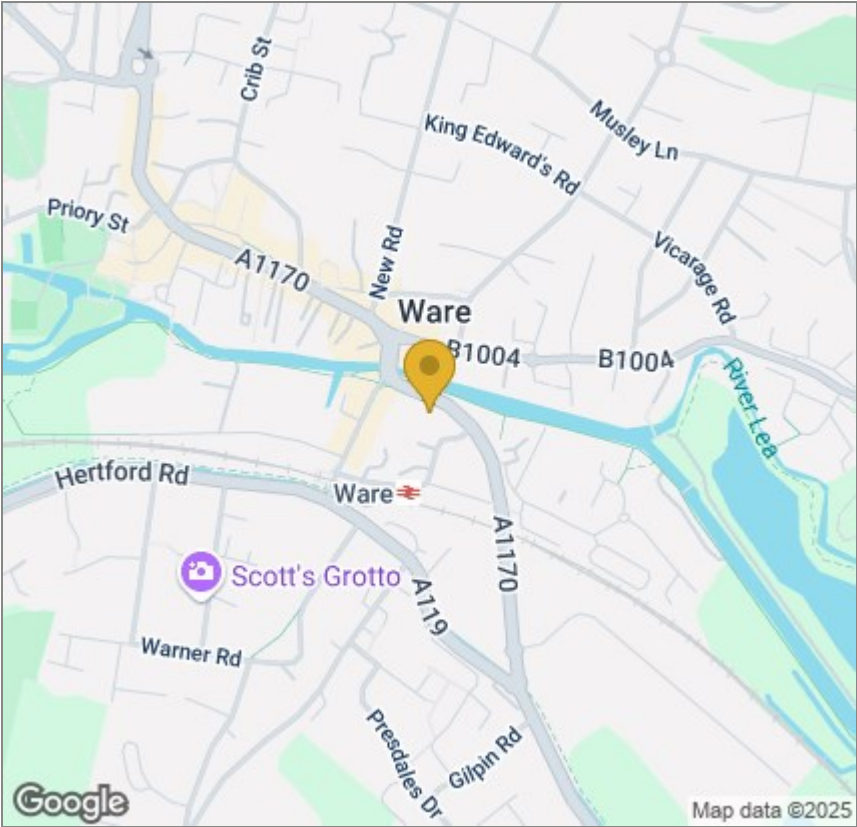




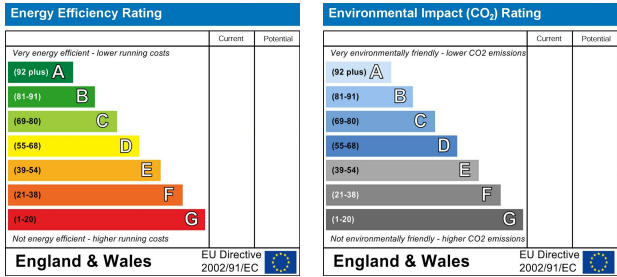
Floor Plan



Area Map



Energy Efficiency Graph



These particulars, whilst believed to be accurate are set out as a general outline only for guidance and do not constitute any part of an offer or contract. Intending purchasers should not rely on them as statements of representation of fact, but must satisfy themselves by inspection or otherwise as to their accuracy. No person in this firms employment has the authority to make or give any representation or warranty in respect of the property.