



Watery Lane, Turnford, Broxbourne EN10 6GF

Guide price £275,000



2



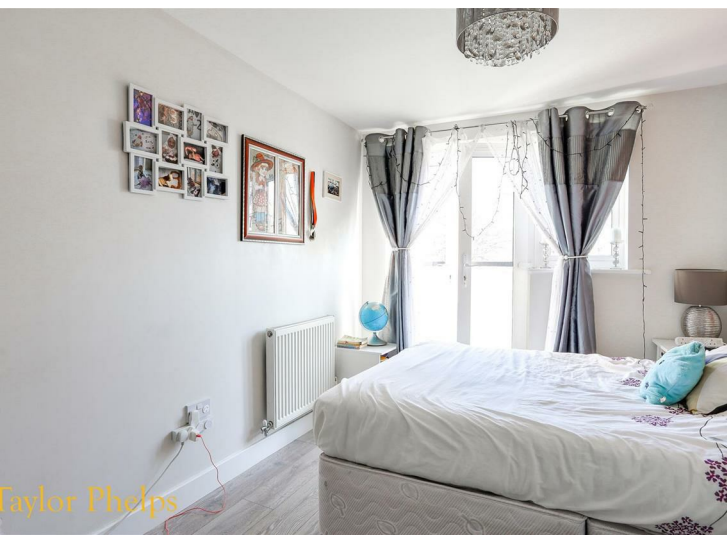
2

Taylor Phelps

Estate Agency



*Taylor Phelps are delighted to offer for sale this larger style two bedroom first floor apartment situated within this recently constructed and highly regarded residential development close to The Hertfordshire Regional College and Brookfield Farm shopping centre. The property benefits from bright and spacious accommodation with two bathrooms, a modern kitchen, gas central heating, double glazing, long lease and undercover parking!*







Taylor Phelps



Taylor Phelps



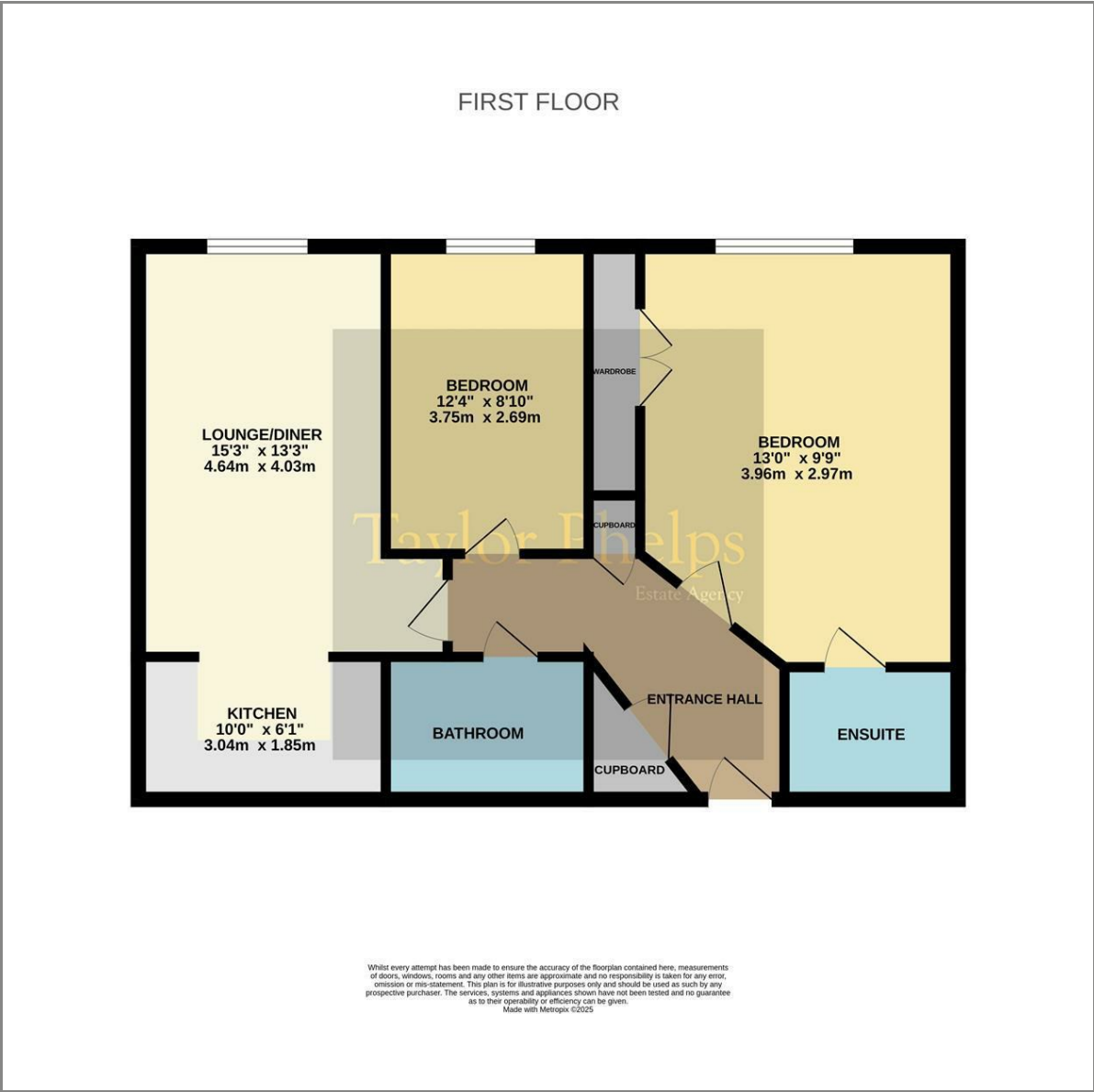
Taylor Phelps



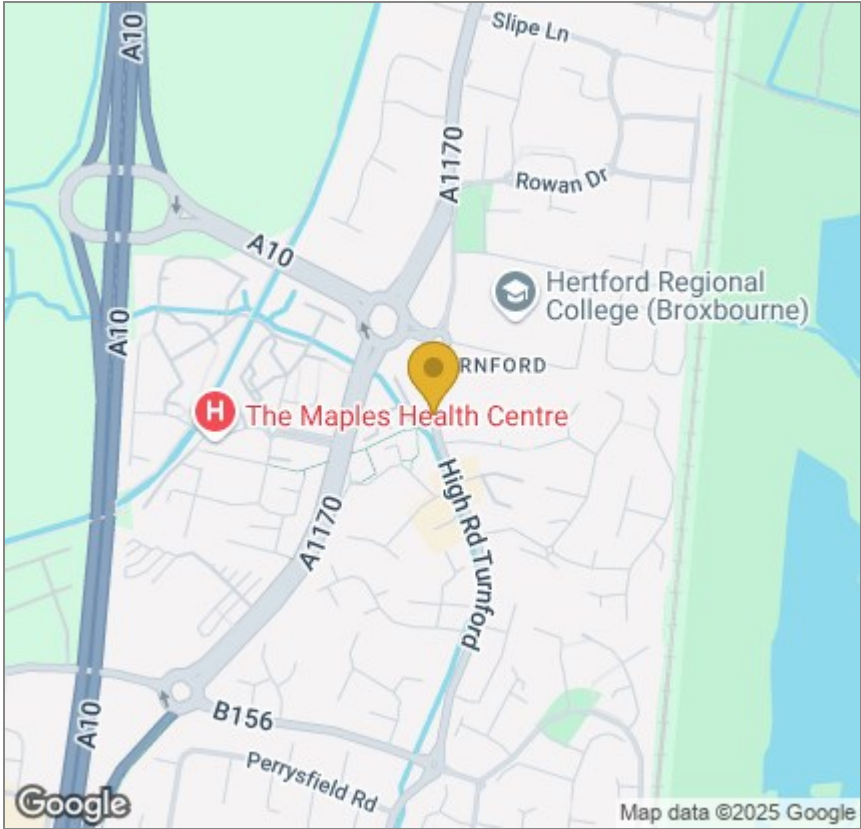
Taylor Phelps



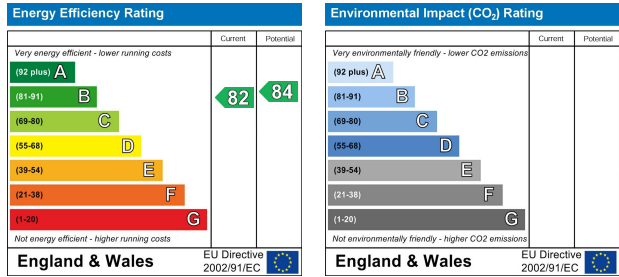
Floor Plan



Area Map



Energy Efficiency Graph



These particulars, whilst believed to be accurate are set out as a general outline only for guidance and do not constitute any part of an offer or contract. Intending purchasers should not rely on them as statements of representation of fact, but must satisfy themselves by inspection or otherwise as to their accuracy. No person in this firms employment has the authority to make or give any representation or warranty in respect of the property.