



High Oak Road, Ware SG12 7PD

Guide price £425,000



2

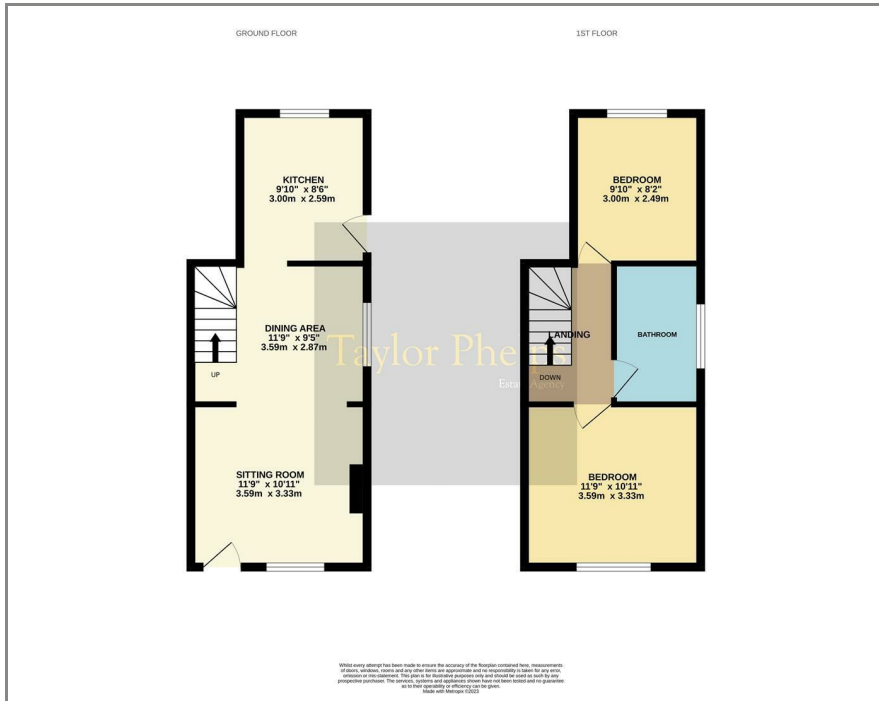


1

Taylor Phelps

Estate Agency

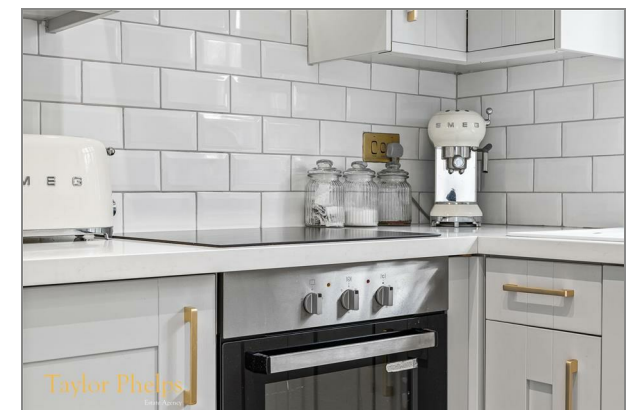
Floor Plan



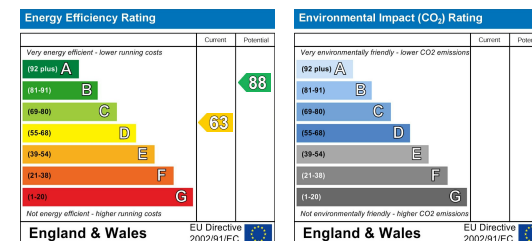
Area Map



Taylor Phelps are pleased to offer this outstanding two bedroom Victorian home positioned on High Oak Road in Ware. This end terrace house benefits from a spacious open plan lounge / diner, high spec refitted kitchen and modern first floor bathroom. Externally the property offers a landscaped rear garden. Ware town centre offers a number of high street amenities and High Oak Road itself is less than a mile to Ware Train station which has links to both Hertford East and London Liverpool Street. Viewing highly recommended to fully appreciated.



Energy Efficiency Graph



These particulars, whilst believed to be accurate are set out as a general outline only for guidance and do not constitute any part of an offer or contract. Intending purchasers should not rely on them as statements of representation of fact, but must satisfy themselves by inspection or otherwise as to their accuracy. No person in this firm's employment has the authority to make or give any representation or warranty in respect of the property.

01920 459000

hello@taylorphelps.co.uk

5 Frenchs Yard, Amwell End, Ware, Hertfordshire, SG12 9HP

www.taylorphelps.co.uk

rightmove 

Zoopla.co.uk

PRS Property Redress Scheme

