



Little Widbury Lane, Ware SG12 7AU

Guide price £750,000



3



3

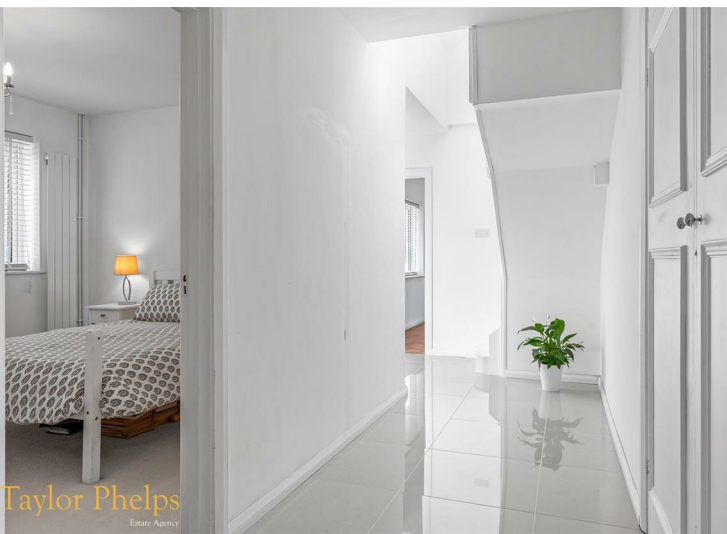
Taylor Phelps

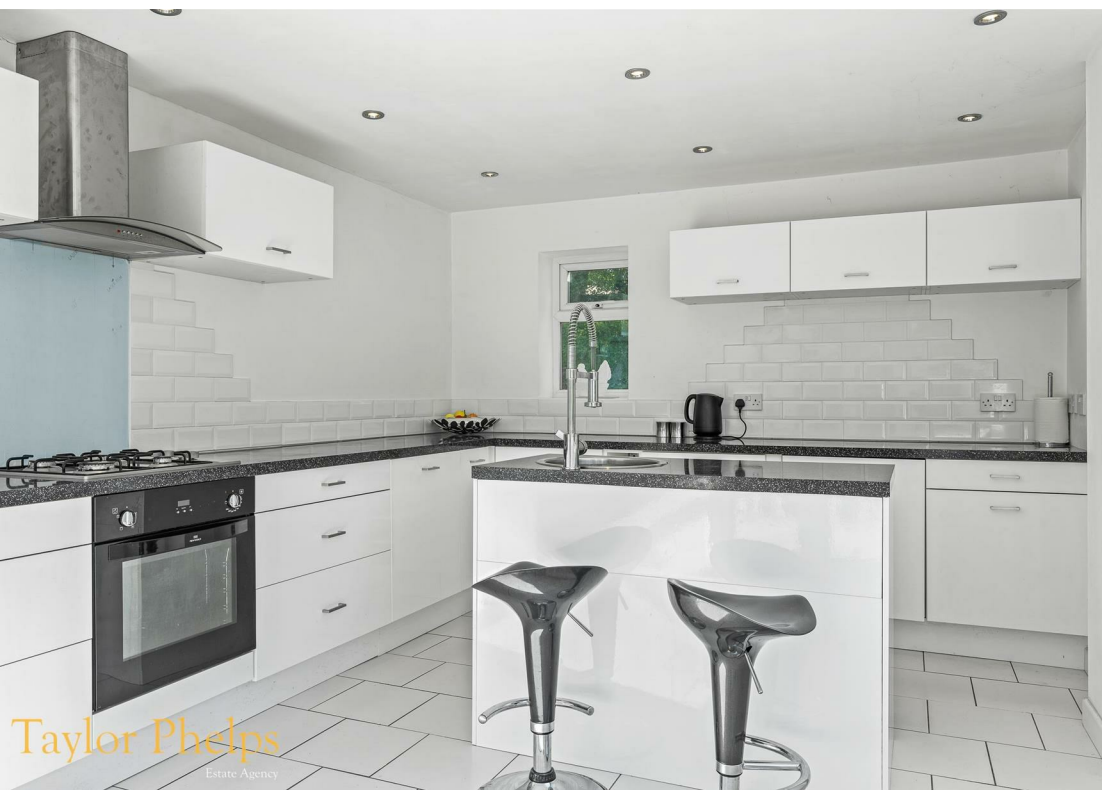
Estate Agency

Taylor Phelps

Estate Agency

Taylor Phelps are pleased to offer for sale this rarely available detached residence positioned on Little Widbury Lane, with elevated views over the south of Ware. This property offers spacious and versatile accommodation with three double bedrooms and three bathrooms. This property further benefits a modern refitted kitchen and two reception rooms. Externally there is a good size garden to the rear with large terrace over looking the lawn and a driveway to the front providing ample off street parking with access to the garage. Ware high street itself is less than a mile away and offers a range of town centre amenities with Ware Train Station serving both Hertford East and London Liverpool Street.









Taylor Phelps
Estate Agency



Taylor Phelps
Estate Agency



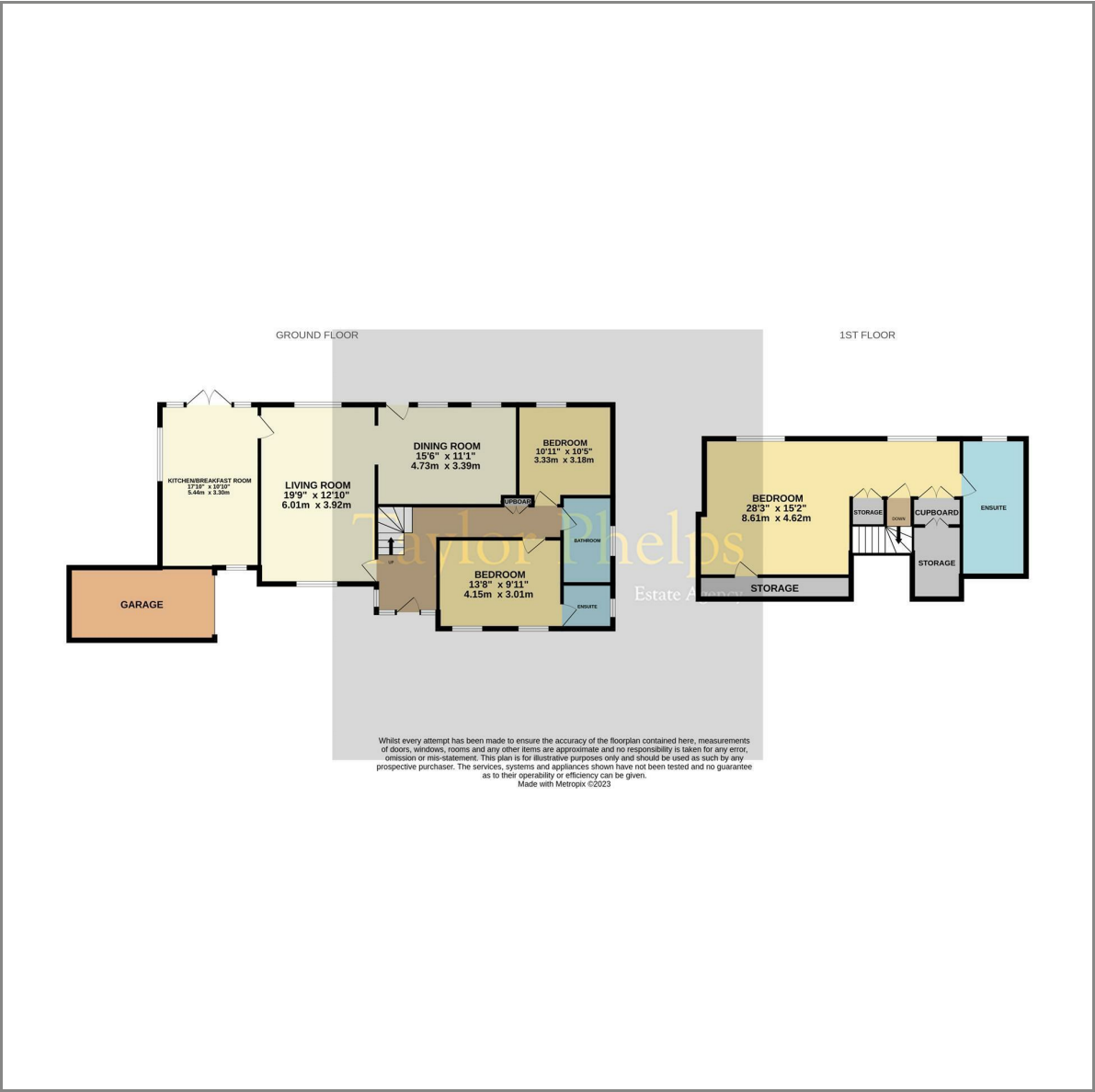
Taylor Phelps
Estate Agency



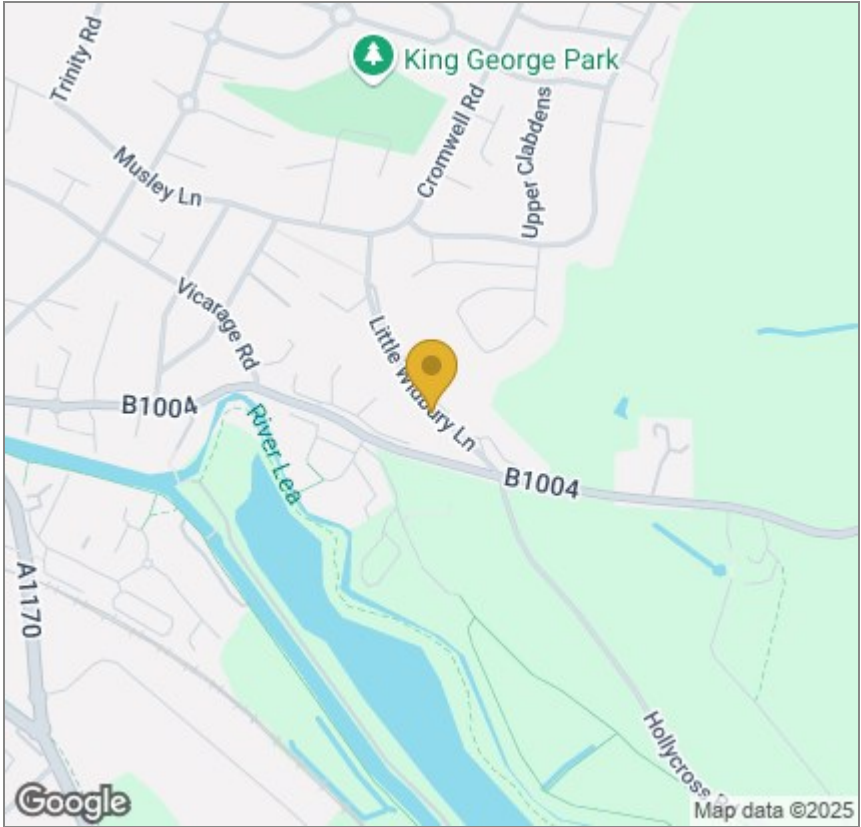
Taylor Phelps
Estate Agency



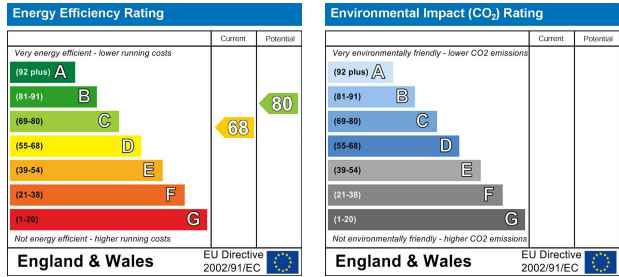
Floor Plan



Area Map



Energy Efficiency Graph



These particulars, whilst believed to be accurate are set out as a general outline only for guidance and do not constitute any part of an offer or contract. Intending purchasers should not rely on them as statements of representation of fact, but must satisfy themselves by inspection or otherwise as to their accuracy. No person in this firms employment has the authority to make or give any representation or warranty in respect of the property.