



Coddington Close, Ware SG12 9FN
£195,000 representing a 60% share of total value



2

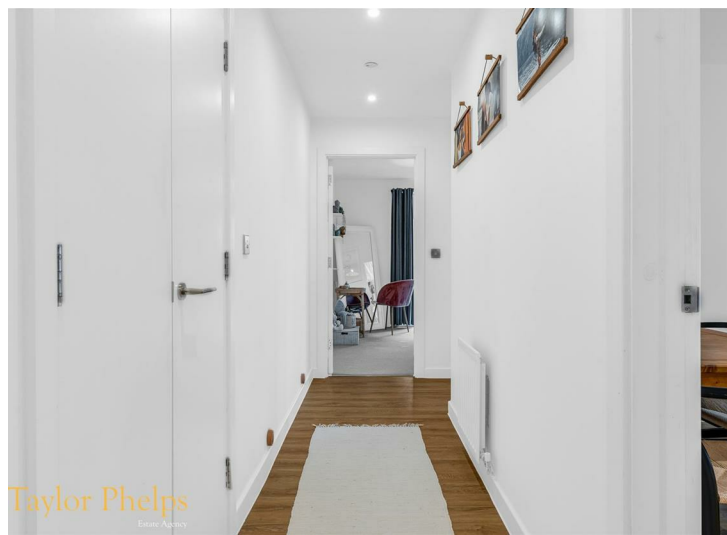
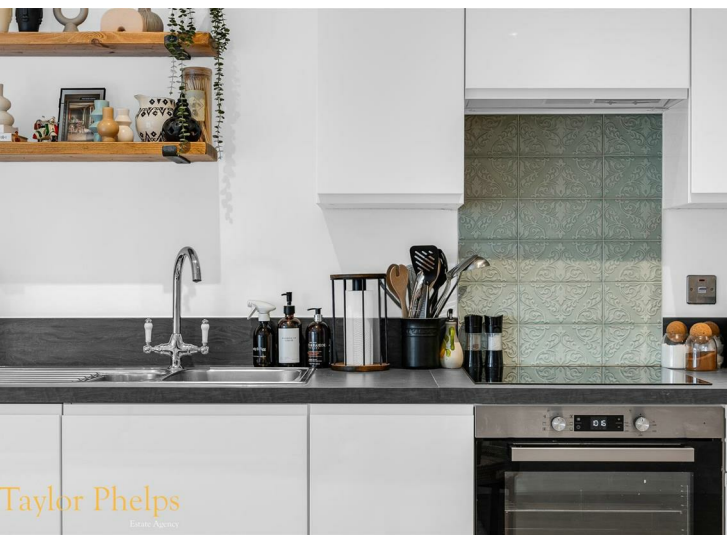


1

Taylor Phelps

Estate Agency

Taylor Phelps are pleased to offer this superb, high spec, two bedroom apartment in Ware, close to the high street and station which serves both Herford East and London Liverpool Street! This rarely available, larger style apartment is available to purchase on the shared ownership scheme and further benefits from a fantastic dual aspect bedroom with private balcony, modern open plan kitchen and luxury bathroom suite. This modern development further offers a lift to all floors and residents parking. Internal viewing highly recommended to fully appreciate.





Taylor Phelps
Estate Agency



Taylor Phelps
Estate Agency



Taylor Phelps
Estate Agency



Taylor Phelps
Estate Agency





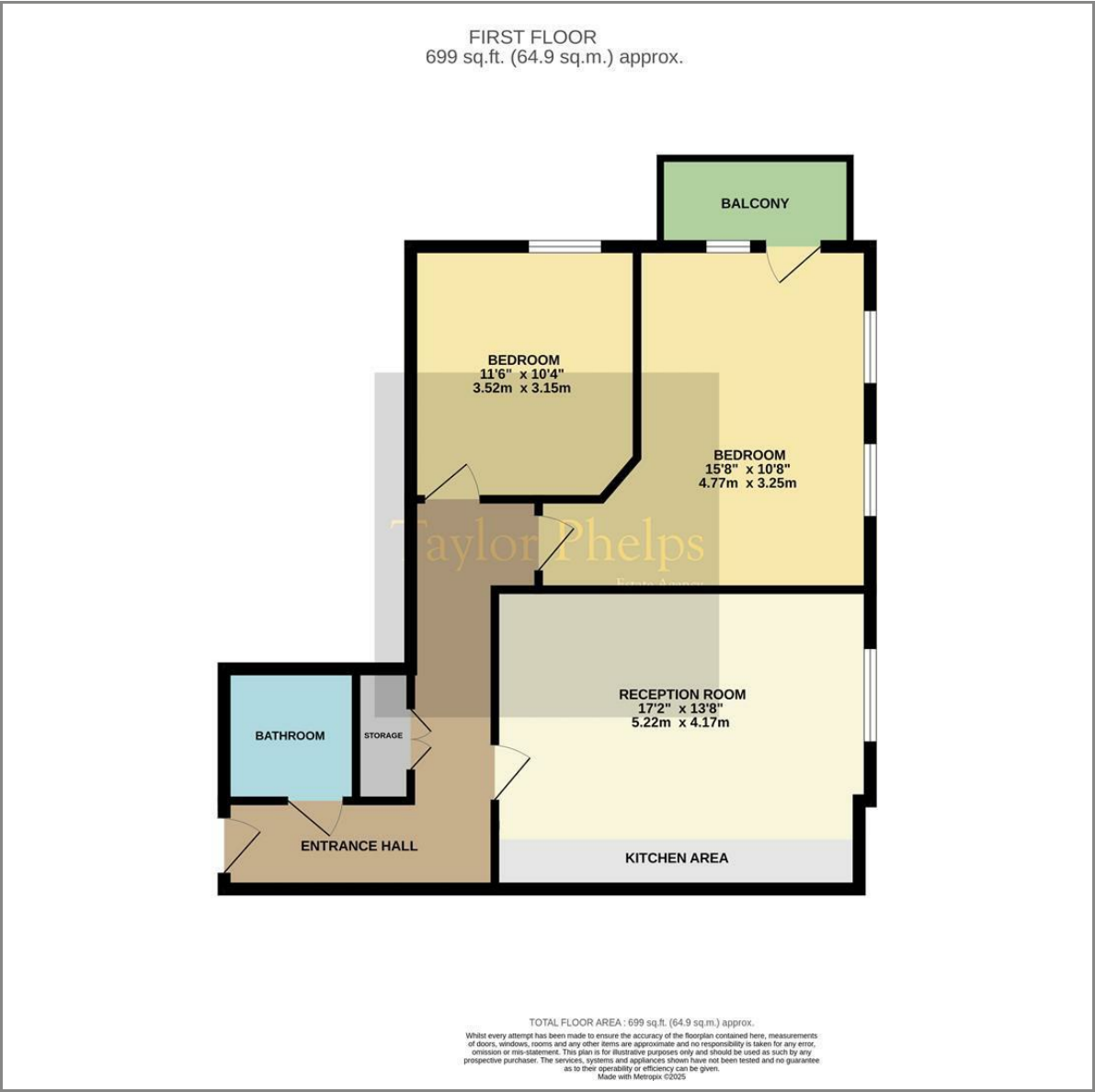




Taylor Phelps

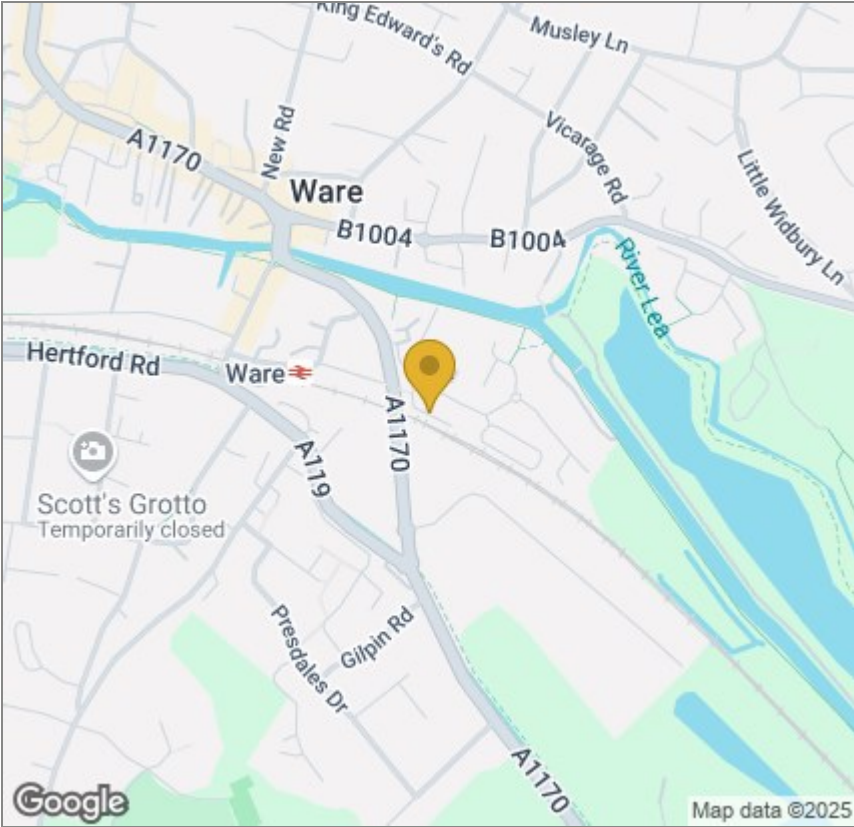
Estate Agency

Floor Plan

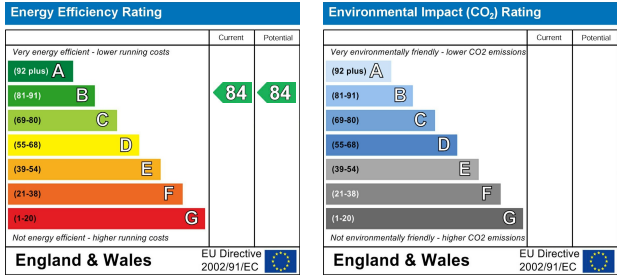


These particulars, whilst believed to be accurate are set out as a general outline only for guidance and do not constitute any part of an offer or contract. Intending purchasers should not rely on them as statements of representation of fact, but must satisfy themselves by inspection or otherwise as to their accuracy. No person in this firms employment has the authority to make or give any representation or warranty in respect of the property.

Area Map



Energy Efficiency Graph



01920 459000

hello@taylorphelps.co.uk

5 Frenchs Yard, Amwell End, Ware, Hertfordshire, SG12 9HP

www.taylorphelps.co.uk

