



St. Marys Lane, Hertingfordbury SG14 2LD

Guide price £450,000



2



1

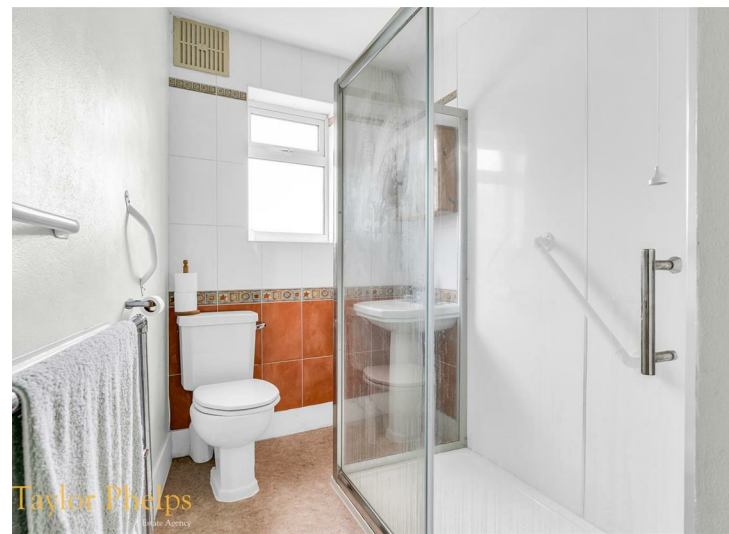
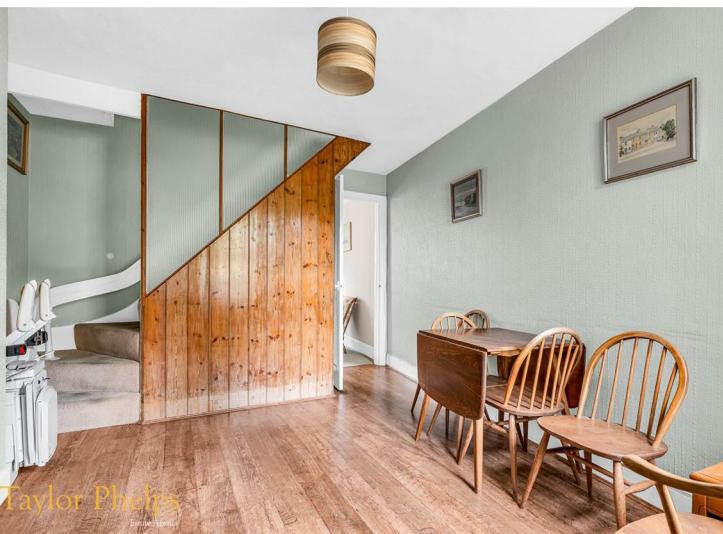
Taylor Phelps

Estate Agency

Estate Agency



*Taylor Phelps are delighted to offer this two bedroom character cottage set in the idyllic village of Hertingfordbury. This property requires general modernisation and boasts scope to extended / convert the loft (subject to planning) This rarely available home is positioned in a tranquil backwater only a few minutes drive of Hertford and is available Chain Free.*





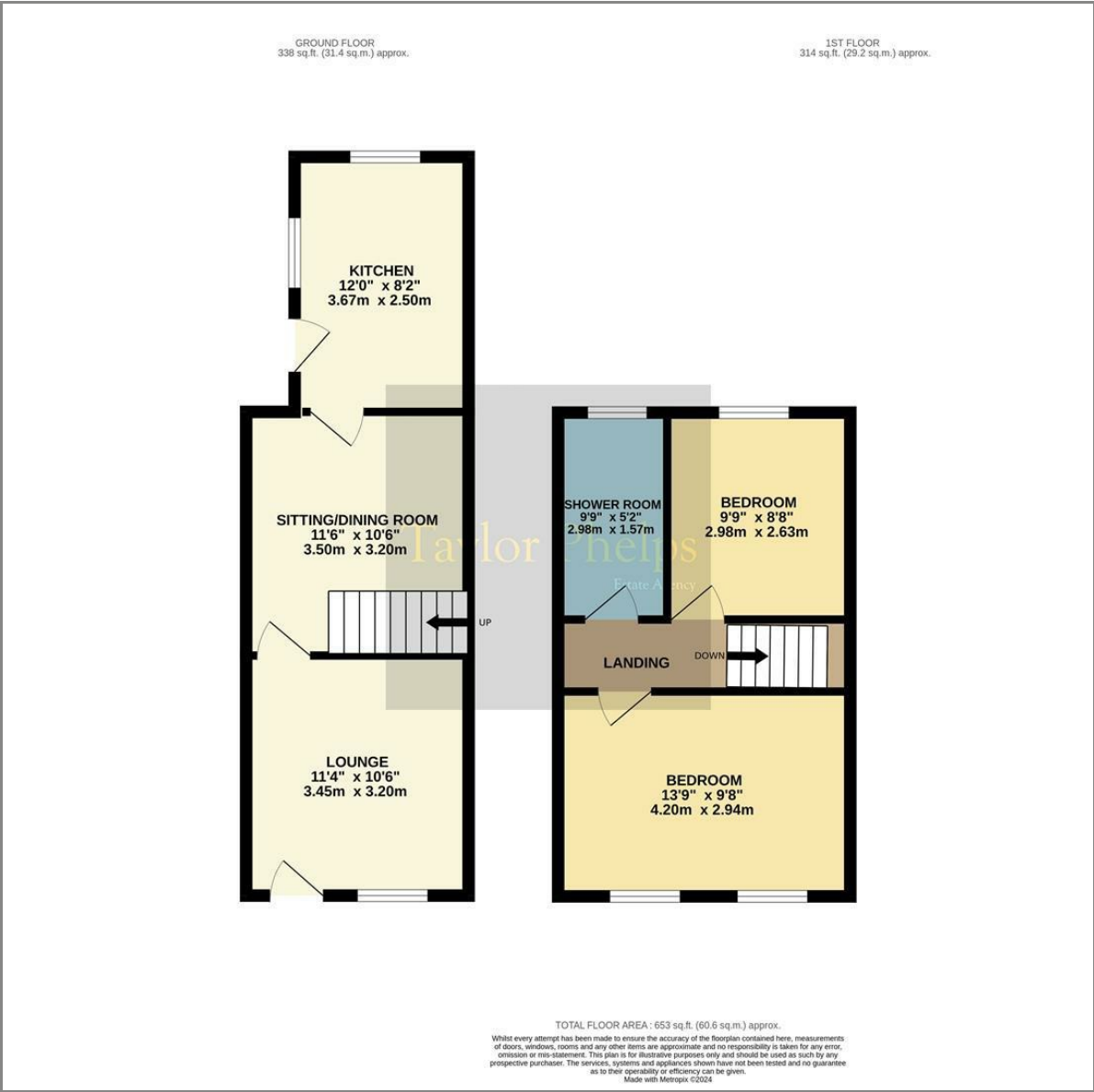








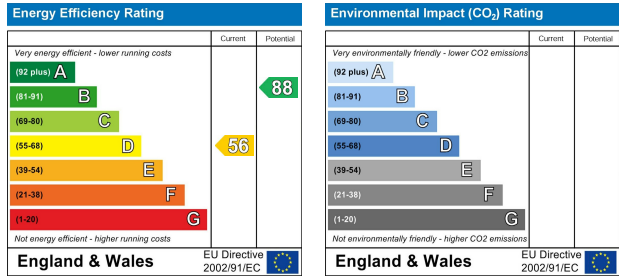
Floor Plan



Area Map



Energy Efficiency Graph



These particulars, whilst believed to be accurate are set out as a general outline only for guidance and do not constitute any part of an offer or contract. Intending purchasers should not rely on them as statements of representation of fact, but must satisfy themselves by inspection or otherwise as to their accuracy. No person in this firms employment has the authority to make or give any representation or warranty in respect of the property.