



Railway View, Ware SG12 9JR

Guide price £310,000



2



2

Taylor Phelps

Estate Agency

Taylor Phelps

Estate Agency



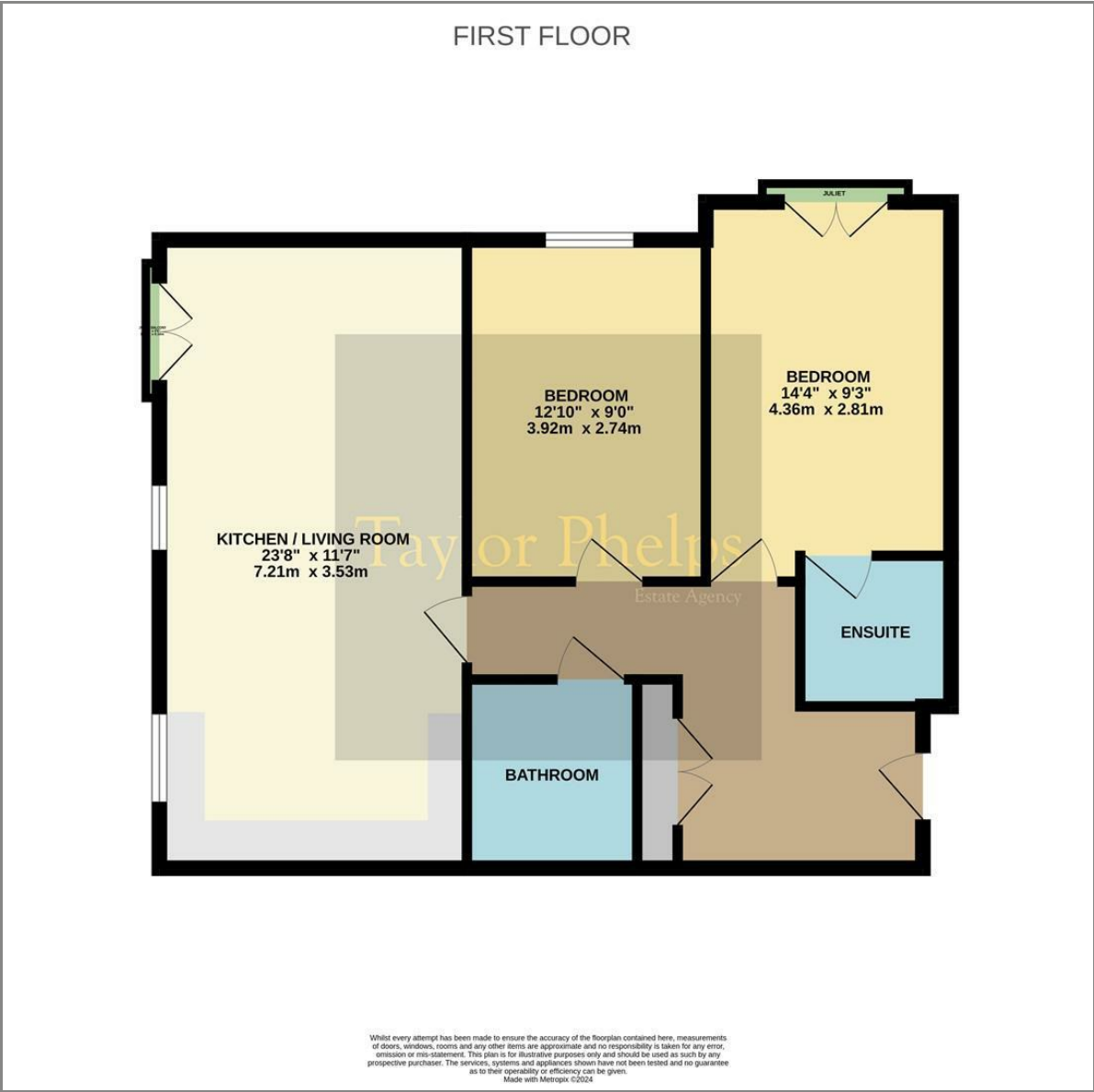
*Taylor Phelps are pleased to offer this fantastic, larger style two bedroom, two bathroom, first floor apartment positioned on the Southside of Ware close to the PRESDALES school, high street and train station which serves both Hertford East and London Liverpool Street! This wonderful south facing property provides bright and spacious accommodation throughout and further benefits from a modern open plan living space, Two Juliet balconies, a long lease and allocated residents parking! Chain Free*



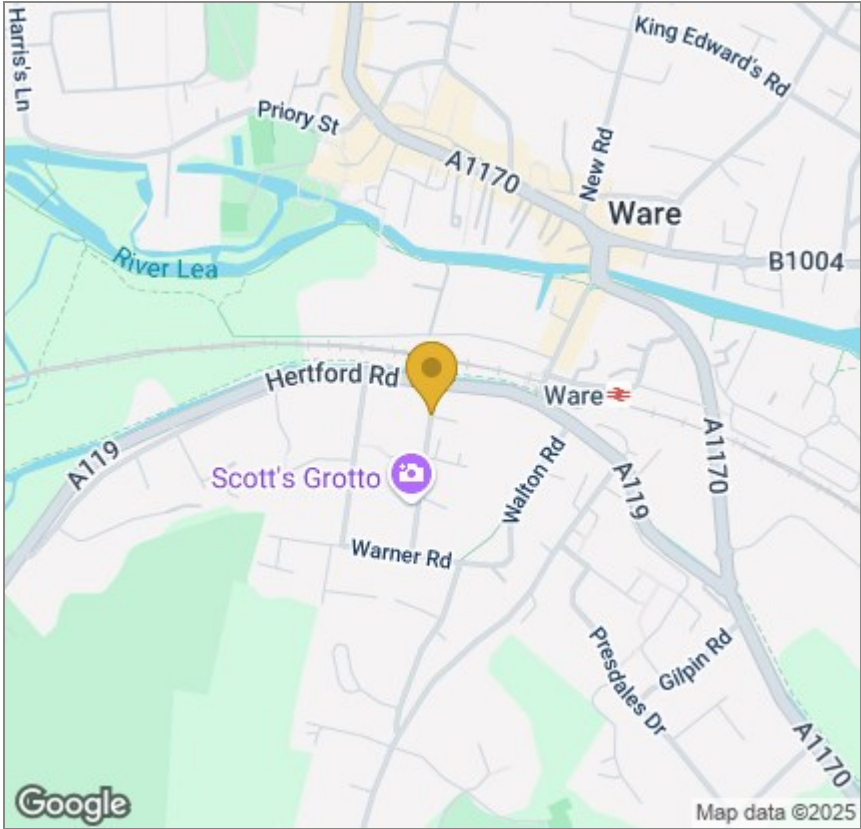




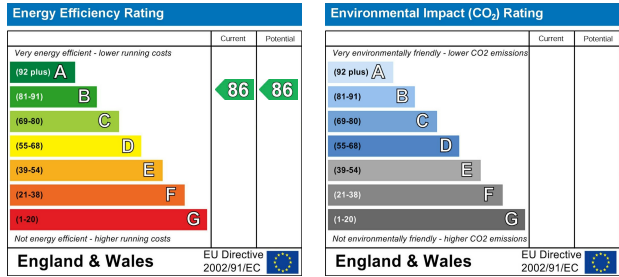
Floor Plan



Area Map



Energy Efficiency Graph



These particulars, whilst believed to be accurate are set out as a general outline only for guidance and do not constitute any part of an offer or contract. Intending purchasers should not rely on them as statements of representation of fact, but must satisfy themselves by inspection or otherwise as to their accuracy. No person in this firms employment has the authority to make or give any representation or warranty in respect of the property.