



The Bourne, Ware SG12 0PU

£410,000

Estate Agency



2



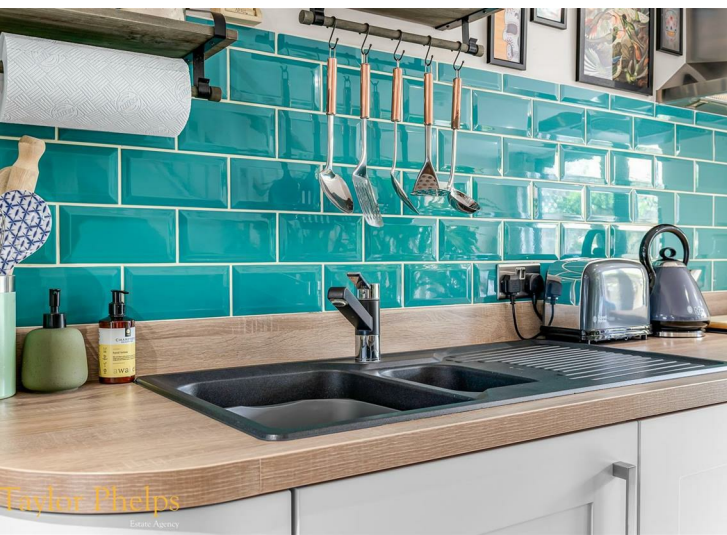
1

Taylor Phelps

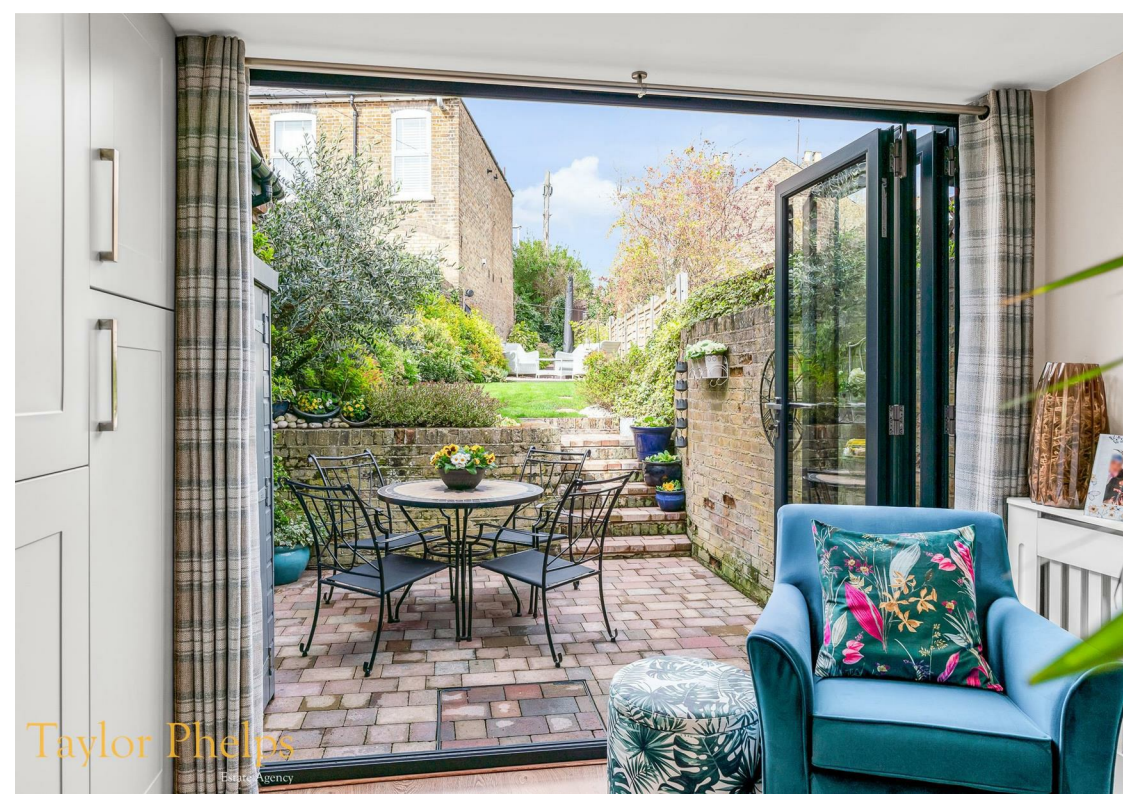
Estate Agency



*Taylor Phelps are pleased to offer this exceptional Victorian terrace which has been subject to a high spec refurbishment throughout. This property benefits from air conditioning, two bedrooms, a superb open plan kitchen with bi folding doors leading to the landscaped sunny rear garden, a spacious living / dining space and a modern refitted bathroom to the first floor. Externally there is parking available to residents via a permit parking scheme.*









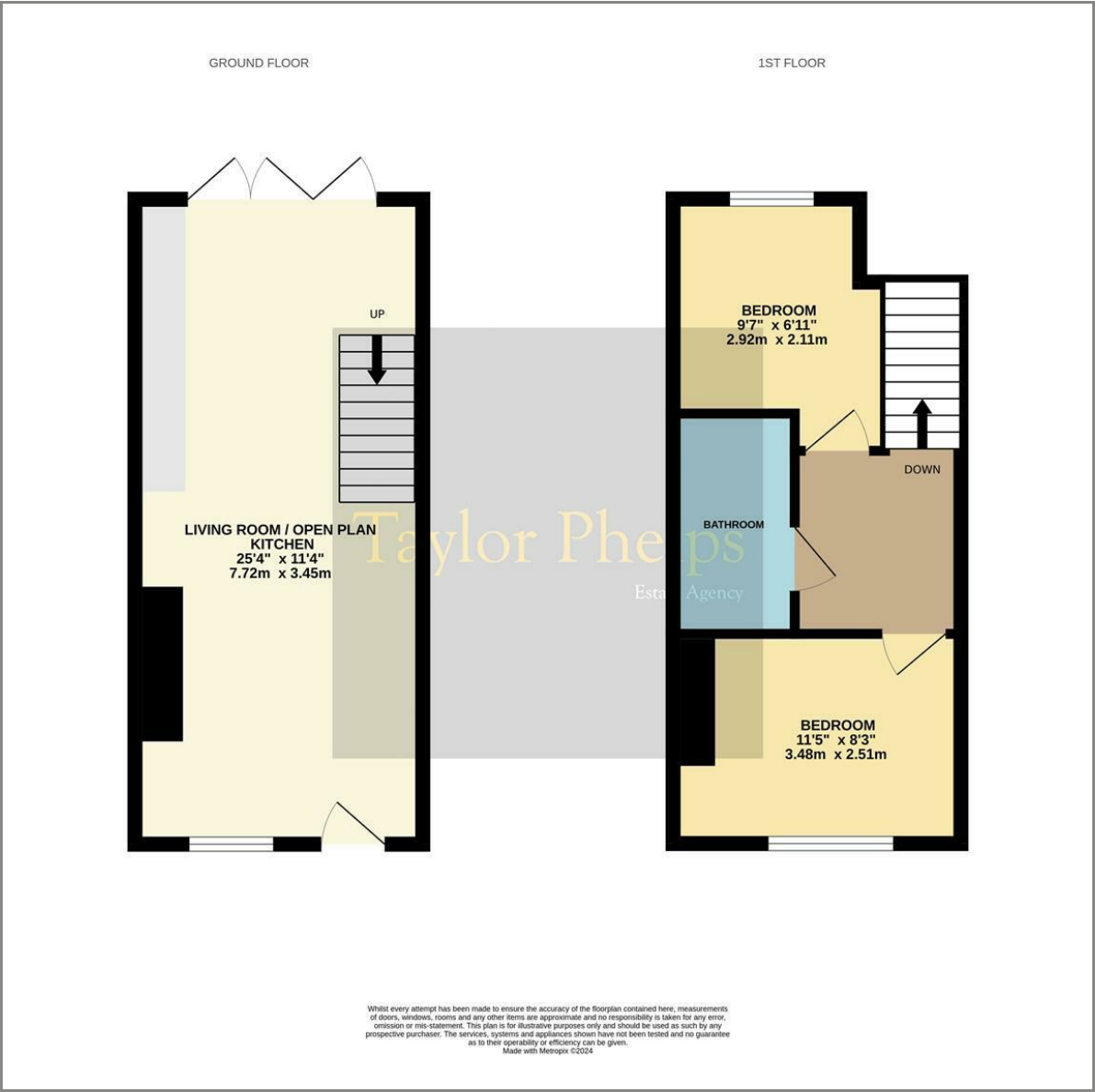




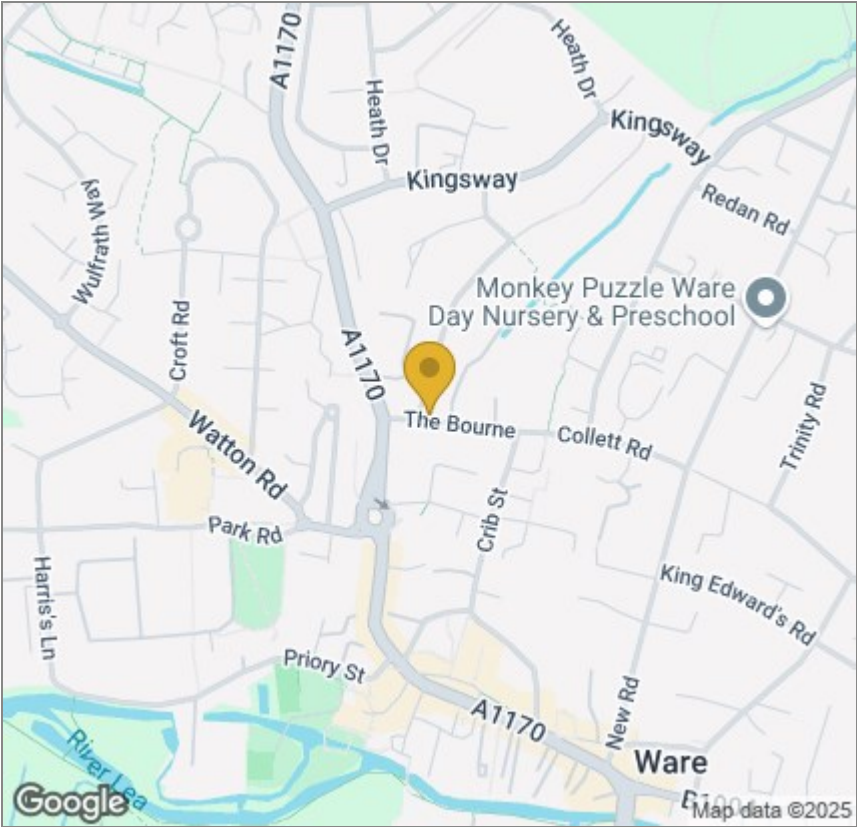




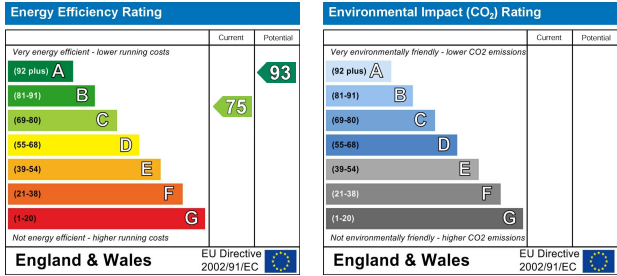
Floor Plan



Area Map



Energy Efficiency Graph



These particulars, whilst believed to be accurate are set out as a general outline only for guidance and do not constitute any part of an offer or contract. Intending purchasers should not rely on them as statements of representation of fact, but must satisfy themselves by inspection or otherwise as to their accuracy. No person in this firms employment has the authority to make or give any representation or warranty in respect of the property.