



Chapmore End, Ware SG12 0HF

Guide price £850,000



4



2

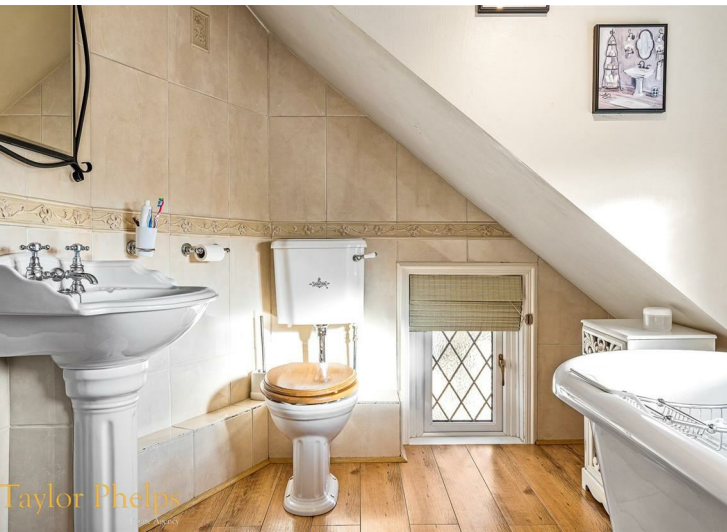
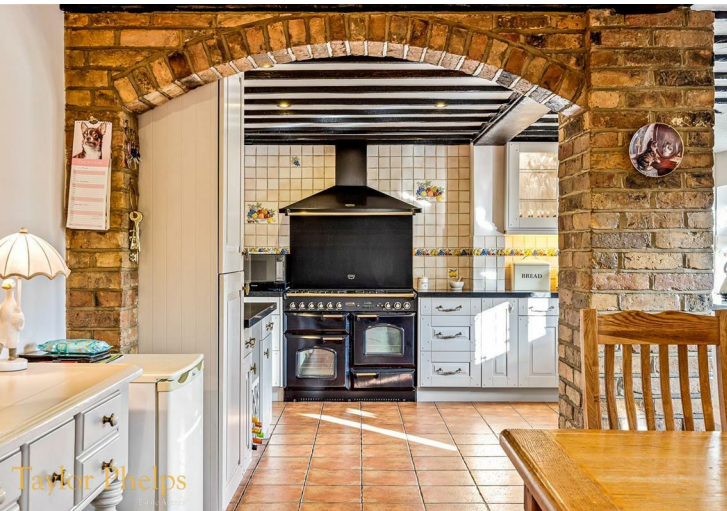
Taylor Phelps

Estate Agency

Estate Agency



*Taylor Phelps are delighted to offer this rarely available four-bedroom residence positioned within an extremely sought-after location in the village of Chapmore End, equidistant from both Hertford and Ware. This beautiful home boasts a wonderful rear garden approaching 200ft in length backing directly onto open countryside with far reaching picturesque views. Internally the property offers a superb family kitchen, two good size reception rooms and two bathrooms. Externally there is a double garage with potential to convert (subject to planning) and a driveway to the rear providing ample off-street parking.*



























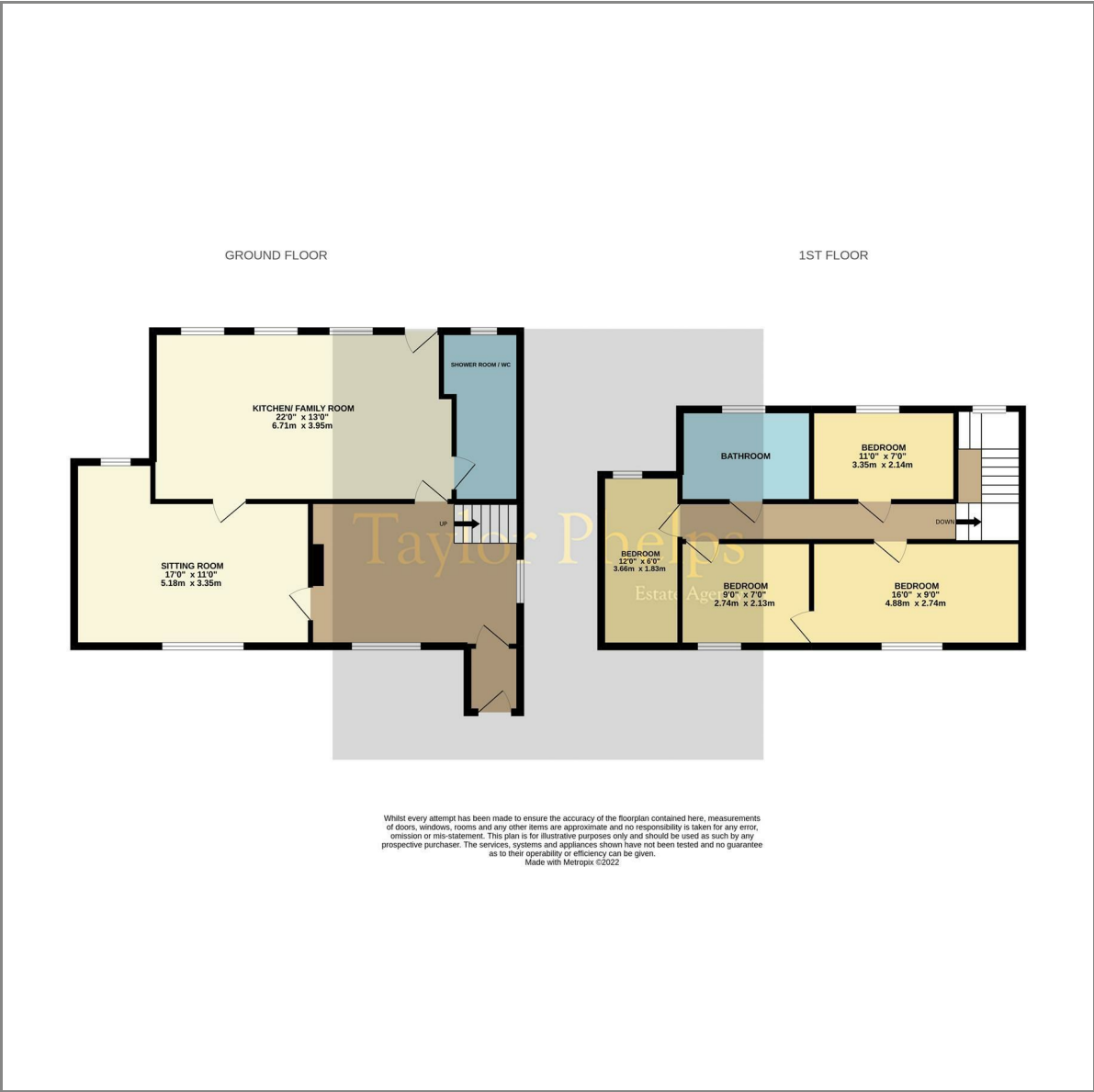




Taylor Phelps



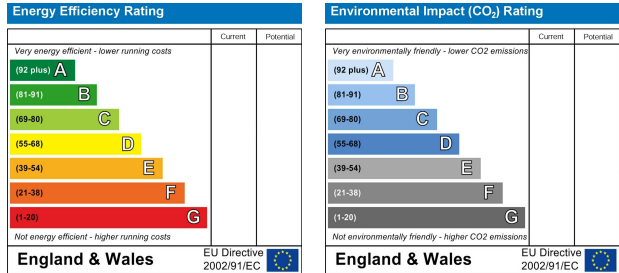
Floor Plan



Area Map



Energy Efficiency Graph



These particulars, whilst believed to be accurate are set out as a general outline only for guidance and do not constitute any part of an offer or contract. Intending purchasers should not rely on them as statements of representation of fact, but must satisfy themselves by inspection or otherwise as to their accuracy. No person in this firms employment has the authority to make or give any representation or warranty in respect of the property.