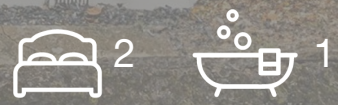


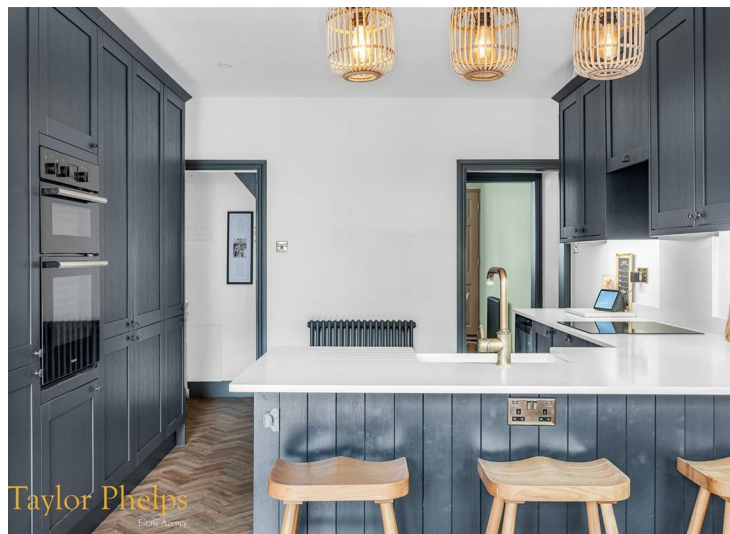


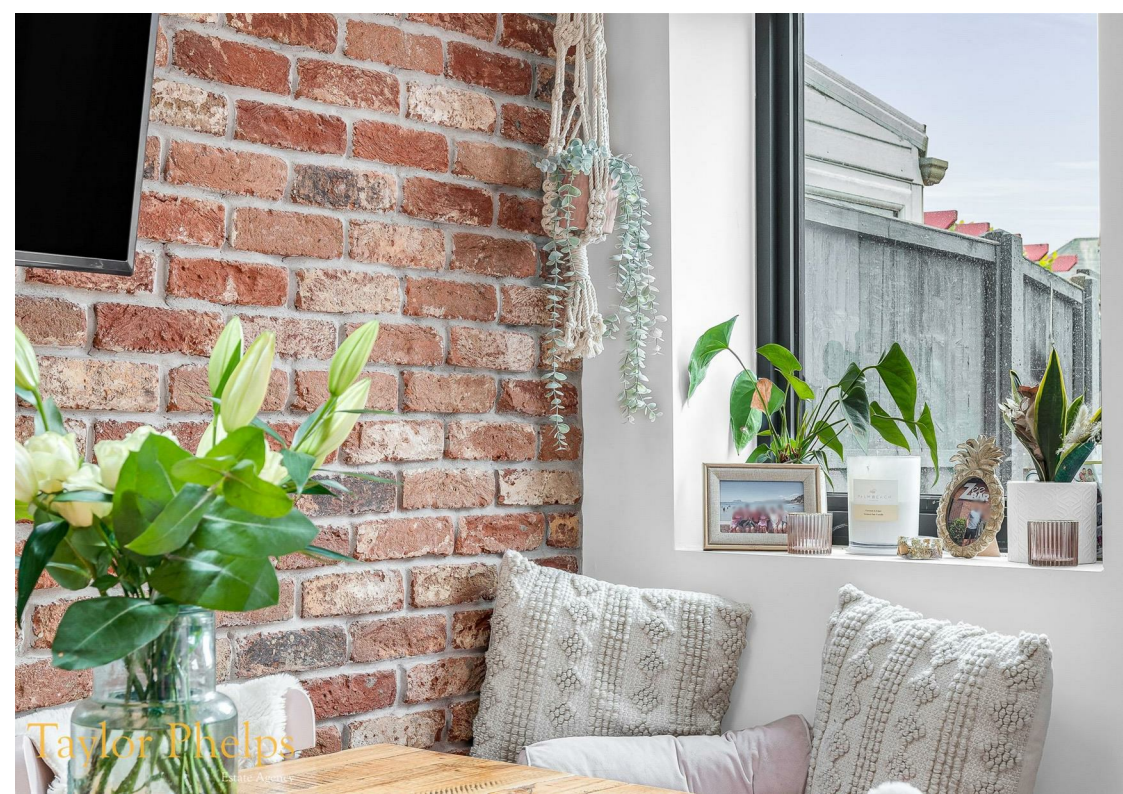
Taylor Phelps
Star Street, Ware SG12 7AQ
Guide price £450,000



Taylor Phelps
Estate Agency

Taylor Phelps are delighted to offer this exceptional bay fronted Victorian terrace, positioned on Star Street in Ware. This property has been subject to high spec upgrades throughout including a bespoke refitted family kitchen with bi folding doors onto the rear garden. The ground floor further consists of a well appointed living room and a useful downstairs w/c. The upstairs is home to both bedrooms and a luxury refitted four piece bathroom suite with the rear garden also benefitting from an artificial lawn. Star Street itself is located conveniently for Ware high street and Ware train station which serves both Hertford East and London Liverpool St.







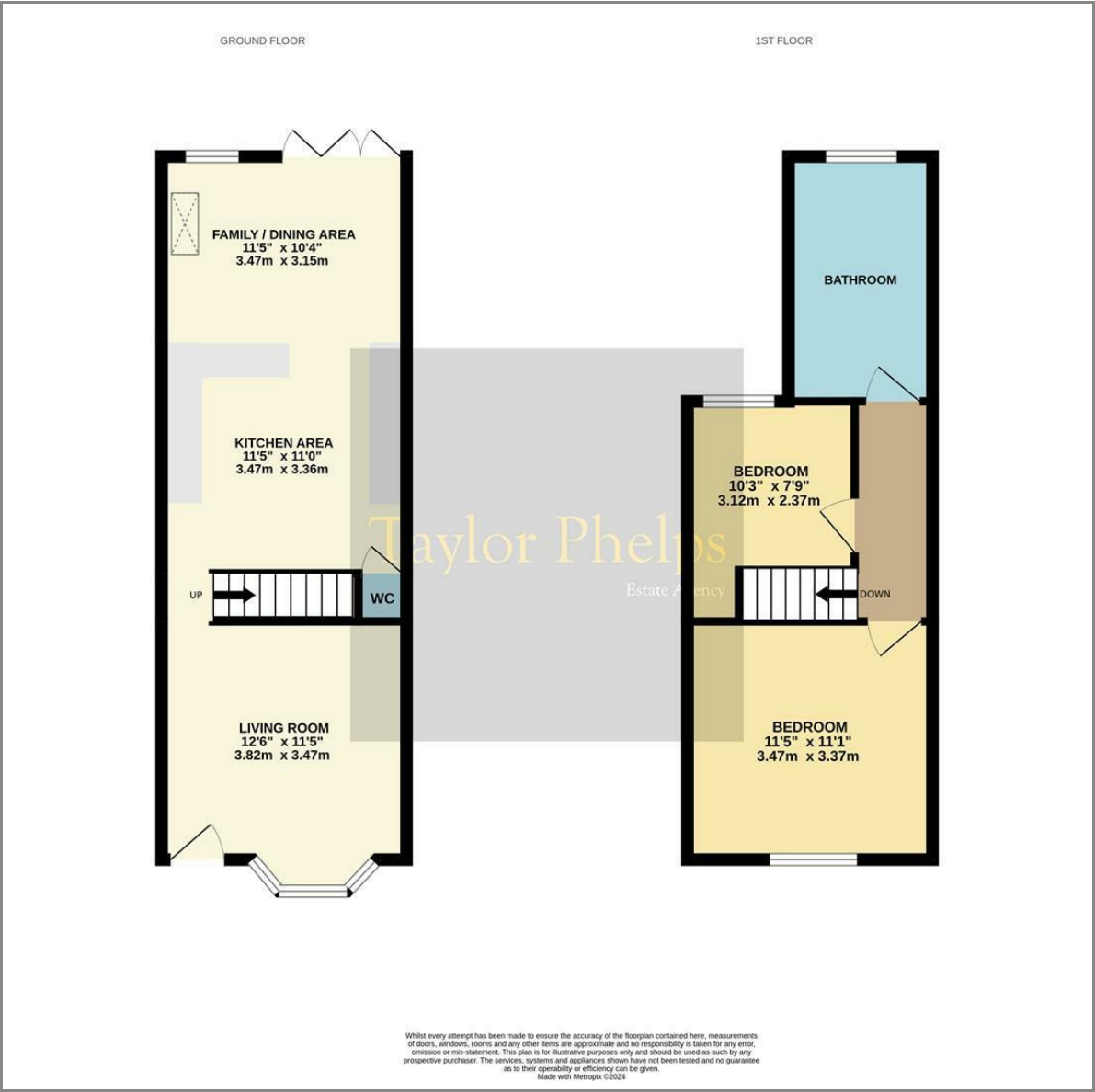




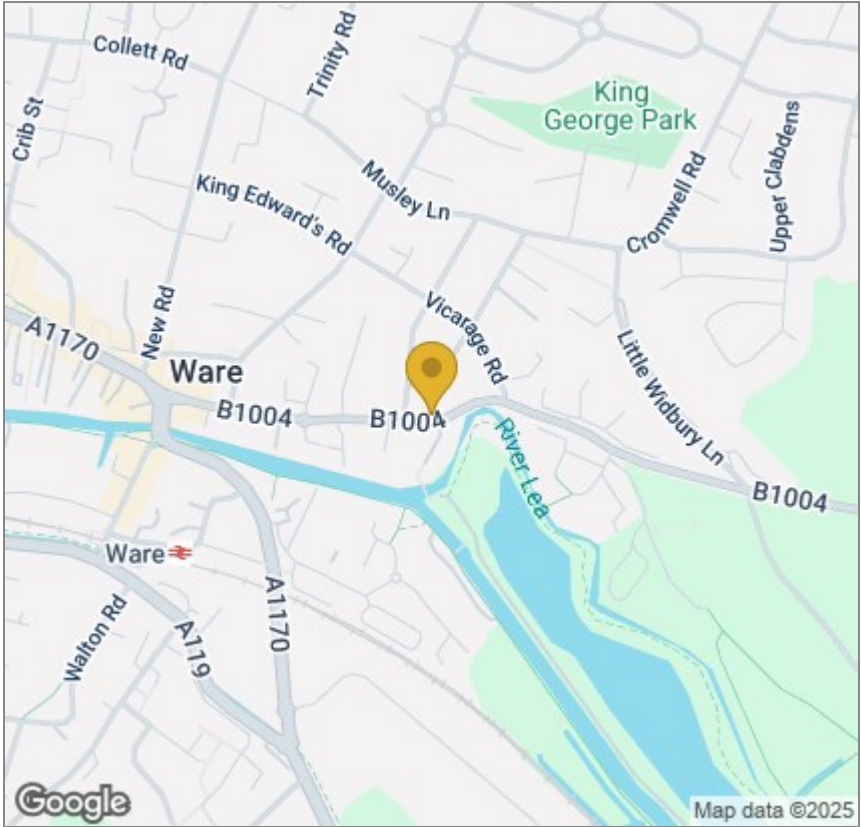


Taylor Phelps
Estate Agents

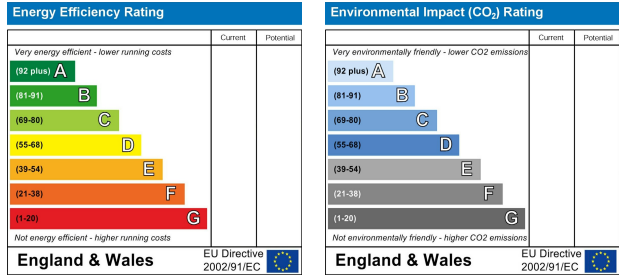
Floor Plan



Area Map



Energy Efficiency Graph



These particulars, whilst believed to be accurate are set out as a general outline only for guidance and do not constitute any part of an offer or contract. Intending purchasers should not rely on them as statements of representation of fact, but must satisfy themselves by inspection or otherwise as to their accuracy. No person in this firms employment has the authority to make or give any representation or warranty in respect of the property.