



Clements Street, Ware SG12 7AG

Guide price £425,000



3



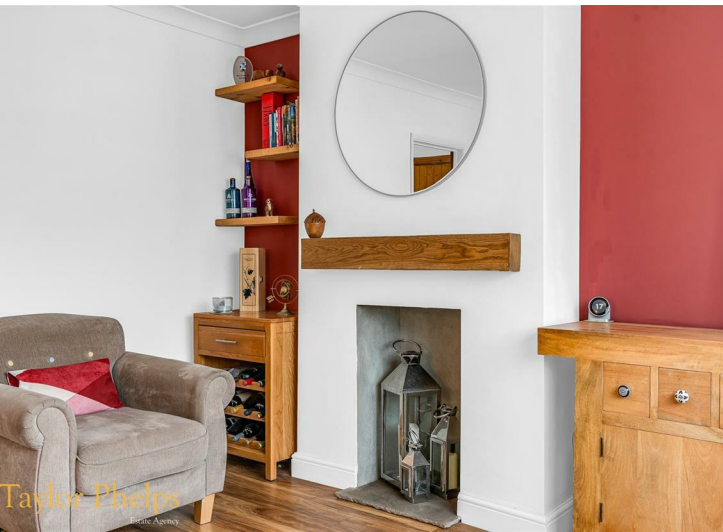
1

Taylor Phelps

Estate Agency

Taylor Phelps
Estate Agency

Taylor Phelps are pleased to offer this three bedroom semi detached home positioned in Ware close to the high street and train station which serves both Hertford East and London Liverpool Street. This house benefits from a conservatory, a modern refitted family bathroom, a useful downstairs w/c, a spacious driveway to the front proving ample off street parking and furthermore - offers excellent scope to extend with preliminary plans in place.





Taylor Phelps
Estate Agency

Taylor Phelps
Estate Agency



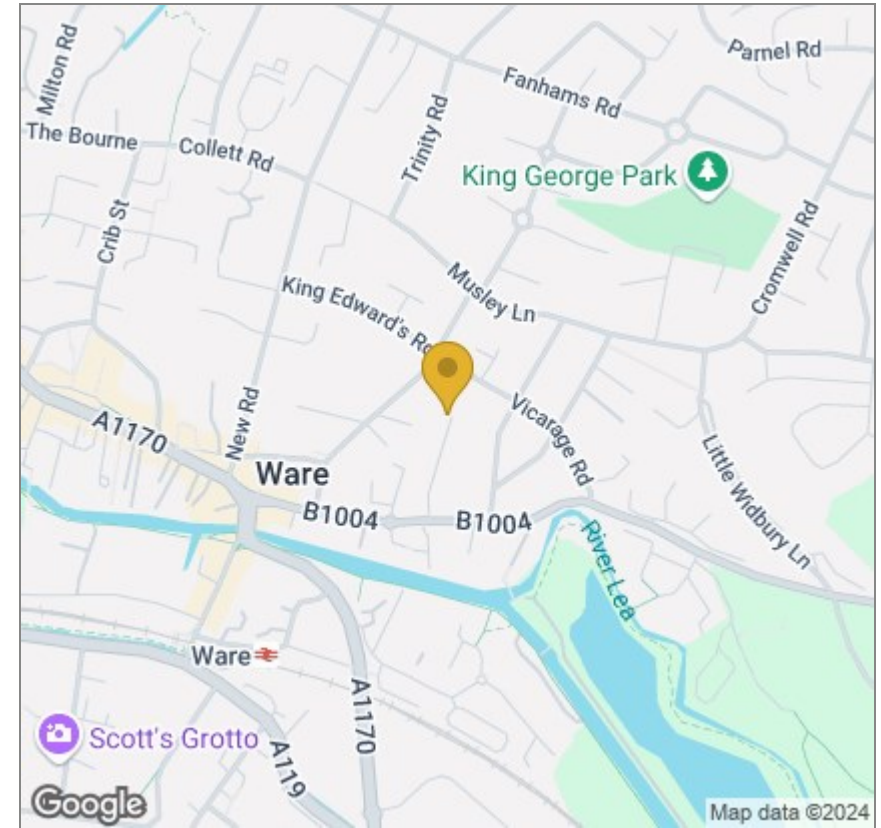




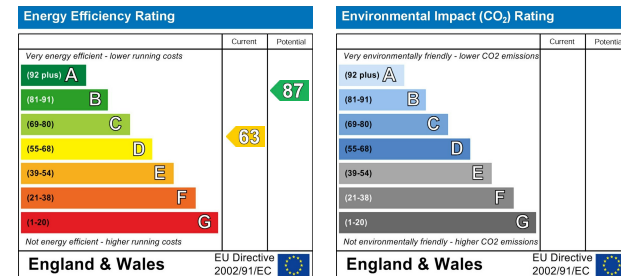
Floor Plan



Area Map



Energy Efficiency Graph



These particulars, whilst believed to be accurate are set out as a general outline only for guidance and do not constitute any part of an offer or contract. Intending purchasers should not rely on them as statements of representation of fact, but must satisfy themselves by inspection or otherwise as to their accuracy. No person in this firm's employment has the authority to make or give any representation or warranty in respect of the property.

01920 459000

hello@taylorhelps.co.uk

5 Frenchs Yard, Amwell End, Ware, Hertfordshire, SG12 9HP

www.taylorhelps.co.uk

