



Peregrine House, Ware SG12 0XD

Guide price £235,000

Taylor Phelps



2



1

Taylor Phelps

Estate Agency

Taylor Phelps are pleased to offer this two bed first floor apartment located in this popular residential development in Ware! This apartment is available Chain Free and further benefits from an extended lease and residents parking. Ware itself offers a number of amenities, good schools and Ware train station which serves both Herford East and London Liverpool Street



Taylor Phelps



Taylor Phelps



Taylor Phelps



Taylor Phelps



Taylor Phelps



Taylor Phelps

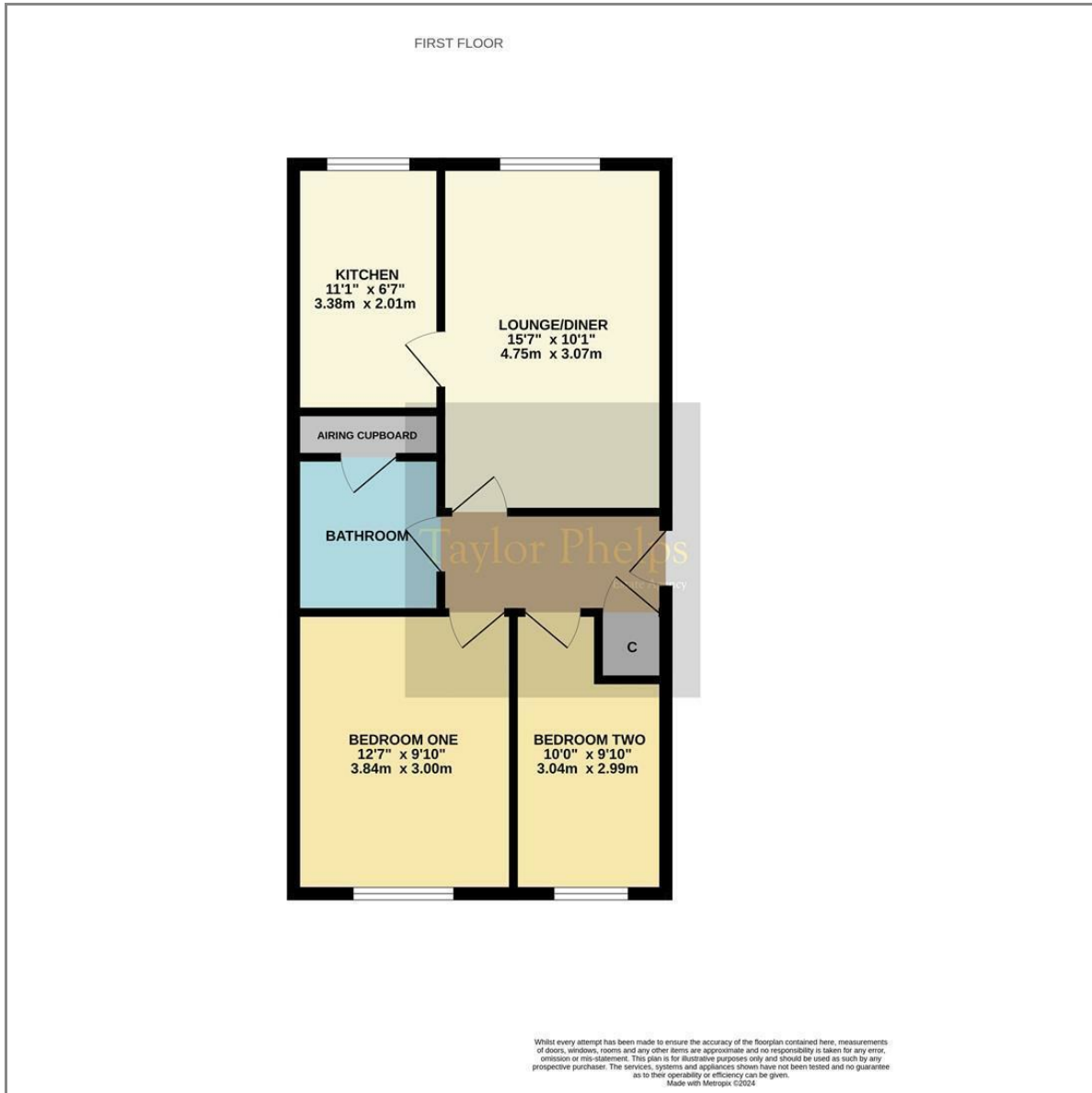


Taylor Phelps

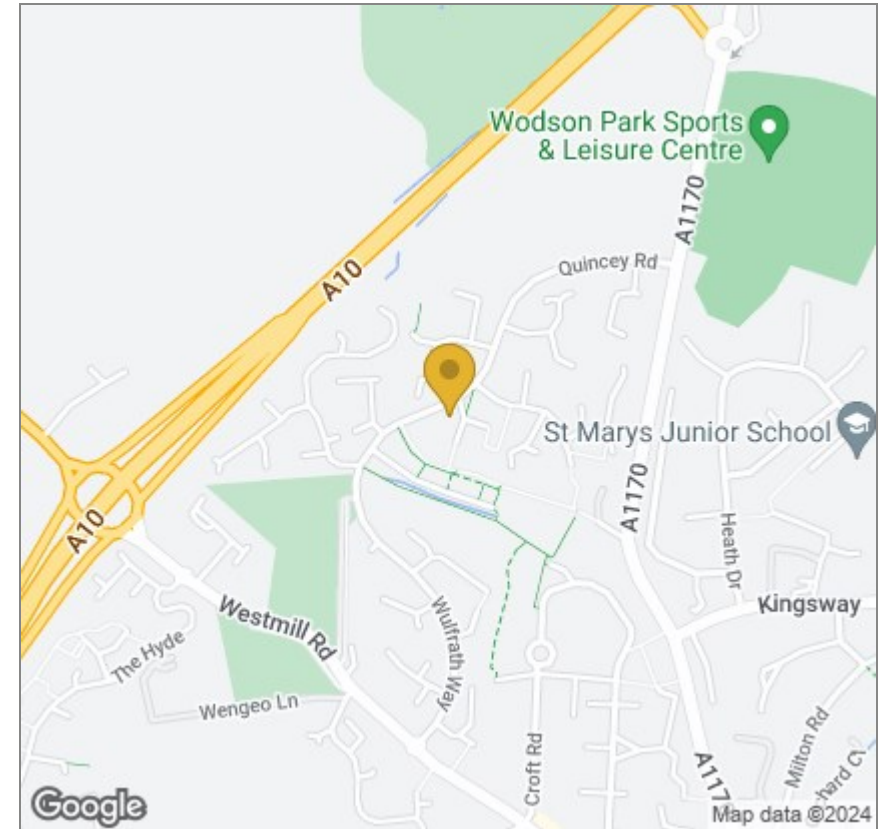


Taylor Phelps

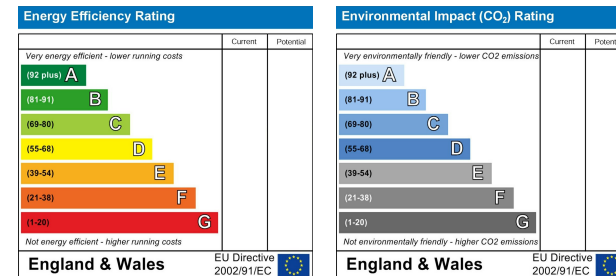
Floor Plan



Area Map



Energy Efficiency Graph



These particulars, whilst believed to be accurate are set out as a general outline only for guidance and do not constitute any part of an offer or contract. Intending purchasers should not rely on them as statements of representation of fact, but must satisfy themselves by inspection or otherwise as to their accuracy. No person in this firm's employment has the authority to make or give any representation or warranty in respect of the property.

01920 459000

hello@taylorhelps.co.uk

5 Frenchs Yard, Amwell End, Ware, Hertfordshire, SG12 9HP

www.taylorhelps.co.uk

