



Bird Court, Colliers End SG11 1BL

Guide price £635,000



4



2

Taylor Phelps

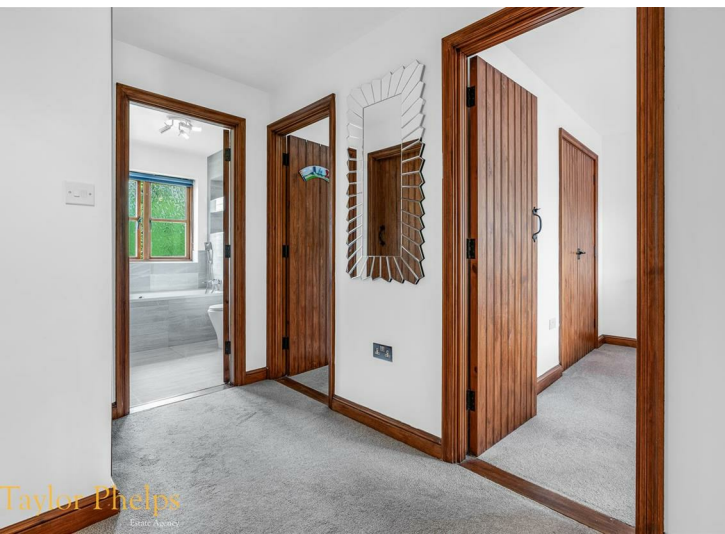
Estate Agency

Taylor Phelps

Estate Agency



*Taylor Phelps are pleased to offer this modern detached house forming part of this exclusive development of just four homes. This family home boasts four bedrooms two bathrooms and a downstairs w/c, further benefits include a useful playroom, bespoke family kitchen with separate utility room, a driveway proving off street parking, a double garage and good size unoverlooked rear garden. Colliers End is a desirable village located just north of Ware which offers many amenities and a train station which serves both Hertford East and London Liverpool Street.*

























Floor Plan



These particulars, whilst believed to be accurate are set out as a general outline only for guidance and do not constitute any part of an offer or contract. Intending purchasers should not rely on them as statements of representation of fact, but must satisfy themselves by inspection or otherwise as to their accuracy. No person in this firms employment has the authority to make or give any representation or warranty in respect of the property.

Area Map



Energy Efficiency Graph

