



Sutton Court, Ware SG12 9FH  
TO LET £1,595



3



2

Taylor Phelps

Estate Agency





Taylor Phelps



Taylor Phelps



Taylor Phelps



Taylor Phelps

Sutton Court, Ware SG12 9FH

TO LET £1,595

Located in prime position on the banks of the River Lea, Taylor Phelps are delighted to offer this larger style three bedroom apartment located close to Ware train station - which serves both Hertford East and London Liverpool Street! This spacious apartment further benefits from a modern kitchen, two bathrooms, a Juliet balcony with river aspect and private residents parking - Available mid / end August.





Taylor Phelps



Taylor Phelps



Taylor Phelps



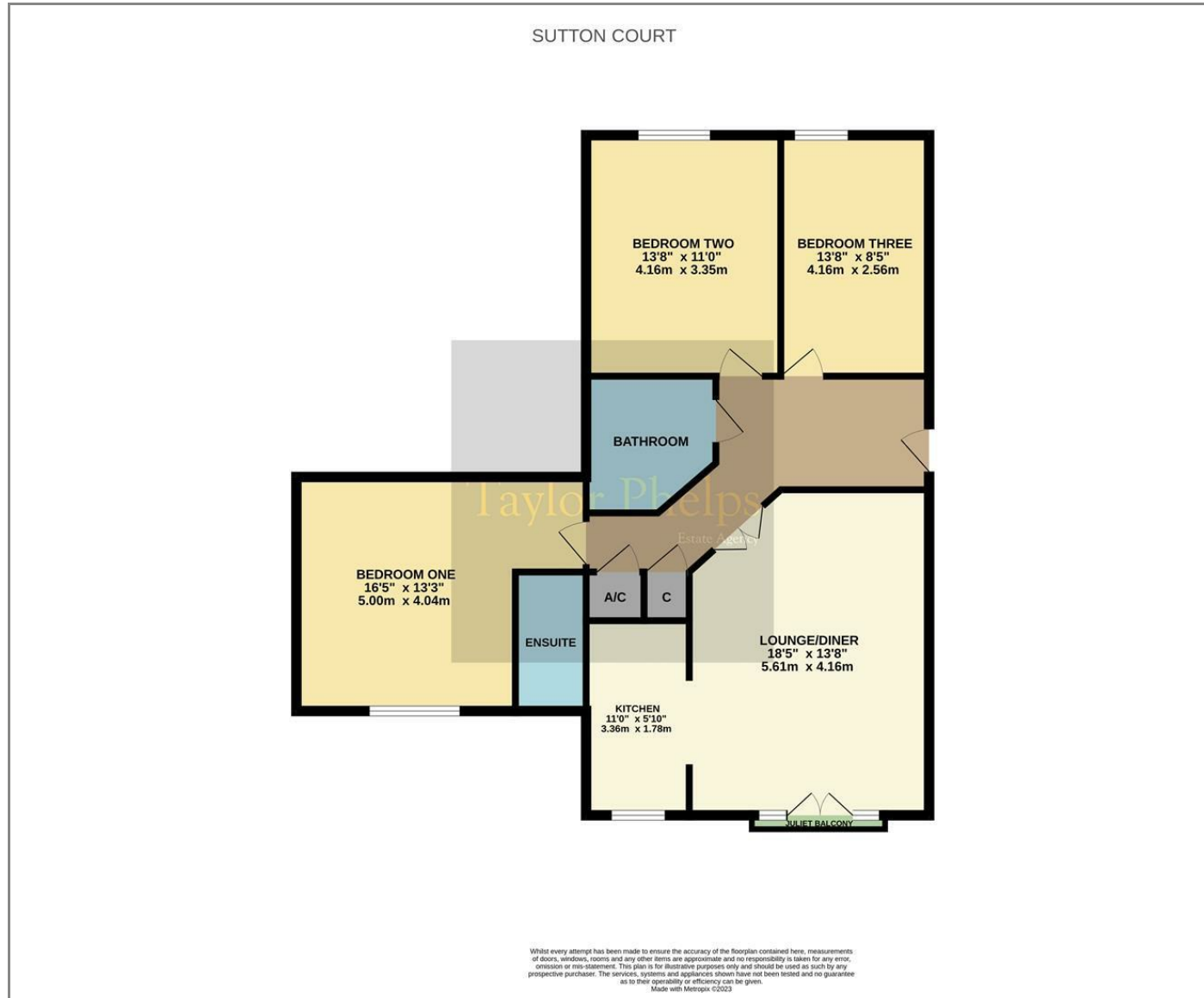
Taylor Phelps



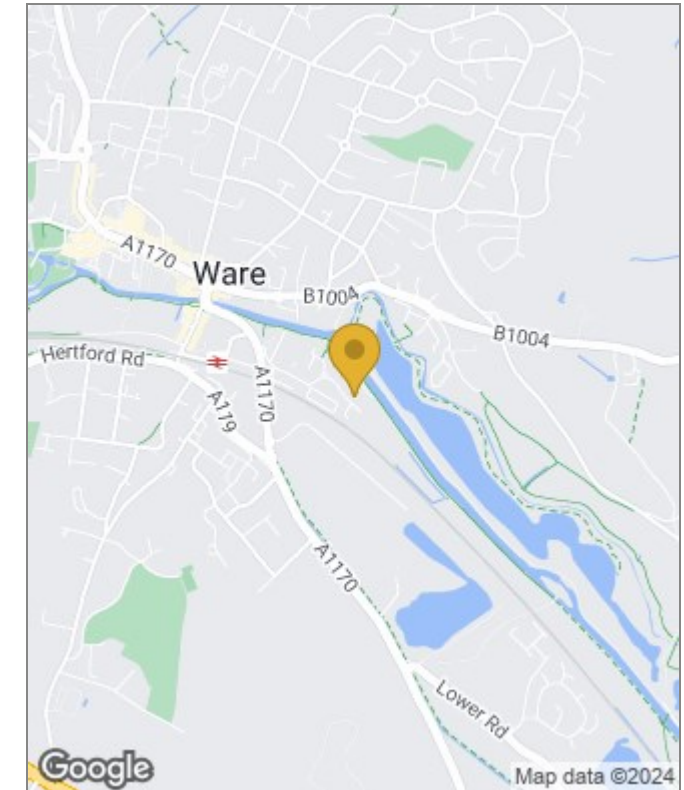
Taylor Phelps



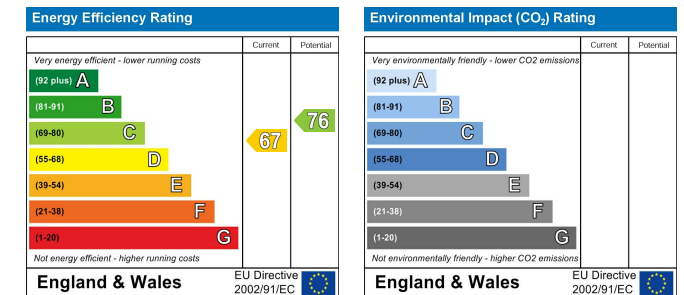
# Floor Plans



# Area Map



# Energy Performance Graph



These particulars, whilst believed to be accurate are set out as a general outline only for guidance and do not constitute any part of an offer or contract. Intending purchasers should not rely on them as statements of representation of fact, but must satisfy themselves by inspection or otherwise as to their accuracy. No person in this firm's employment has the authority to make or give any representation or warranty in respect of the property.

01920 459000

hello@taylorphelps.co.uk

5 Frenchs Yard, Amwell End, Ware, Hertfordshire, SG12 9HP

www.taylorphelps.co.uk

