



Austen House, Ware SG12 9HW

£900



Taylor Phelps

Estate Agency

Taylor Phelps

Estate Agency



*Taylor Phelps are delighted to offer a this high spec studio apartment at Austen House in the heart of Ware town centre. This apartment benefits from a high specification designer kitchen with fully integrated Siemens appliances and a luxurious bathroom suites. Externally there is a private balcony and a stunning roof terrace for residents to enjoy the use of. Austen House is positioned conveniently for the high street amenities and Ware train station which serves both Hertford East and London's Liverpool Street.*







Taylor Phelps  
Estate Agency



Taylor Phelps  
Estate Agency



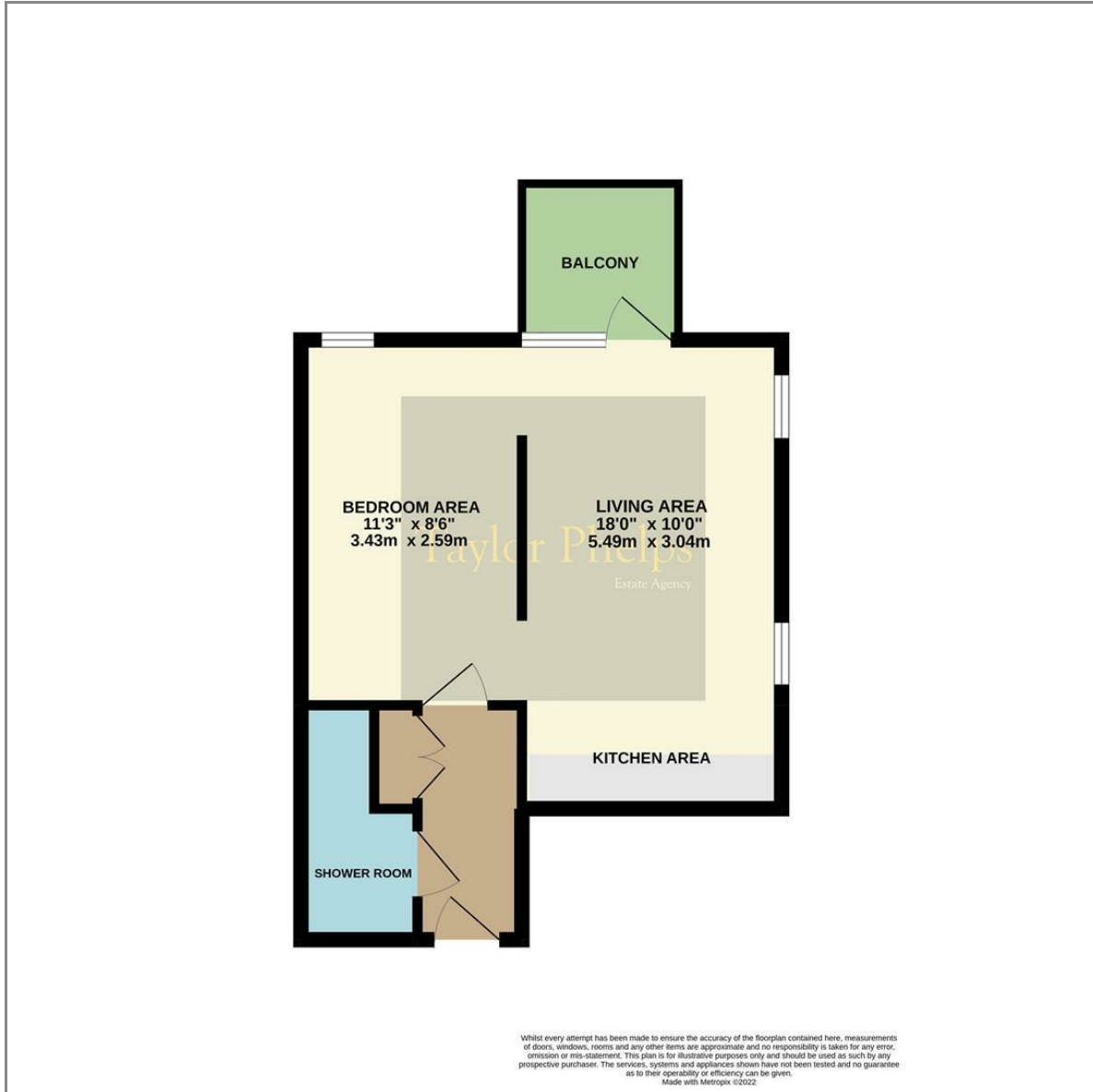
Taylor Phelps  
Estate Agency



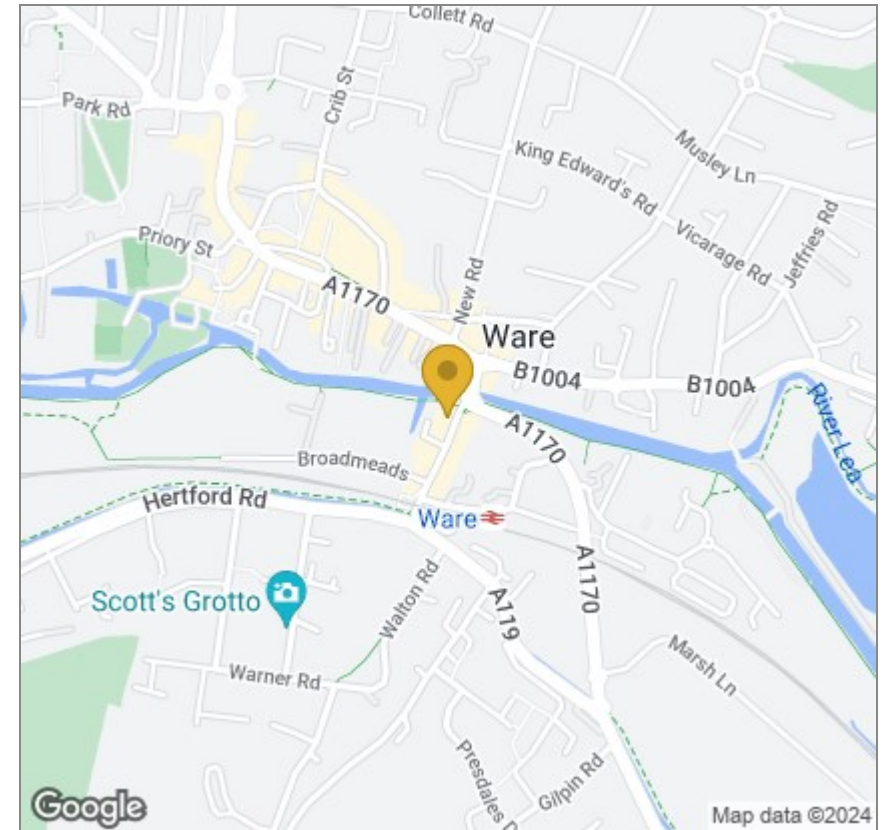
Taylor Phelps  
Estate Agency



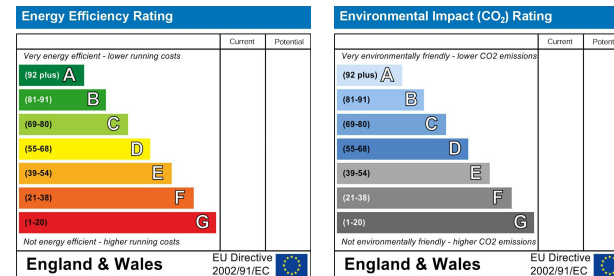
# Floor Plan



# Area Map



# Energy Efficiency Graph



These particulars, whilst believed to be accurate are set out as a general outline only for guidance and do not constitute any part of an offer or contract. Intending purchasers should not rely on them as statements of representation of fact, but must satisfy themselves by inspection or otherwise as to their accuracy. No person in this firm's employment has the authority to make or give any representation or warranty in respect of the property.

01920 459000

hello@taylorphelps.co.uk

5 Frenchs Yard, Amwell End, Ware, Hertfordshire, SG12 9HP

[www.taylorphelps.co.uk](http://www.taylorphelps.co.uk)

